

REV	MARK	修改摘要	签名	日期
NO		REVISION DESCRIPTION	SIGNATURE	DATE
		NEW DWG		2016-03-12

Specifications:
Electrical:

1. Current Rating
1.5A/contact terminal
2. Voltage Rating
30V DC
3. Contact Resistance
30 milliohms MAX
4. Dielectric Withstanding Voltage:
500 V AC AT Sea Level
5. Insulation Resistance:
1000MEGA ohms MIN

Mechanical:

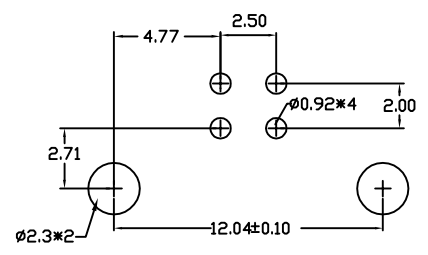
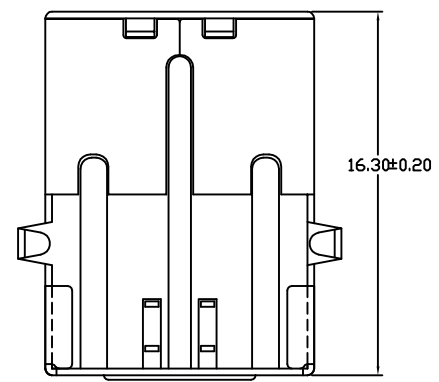
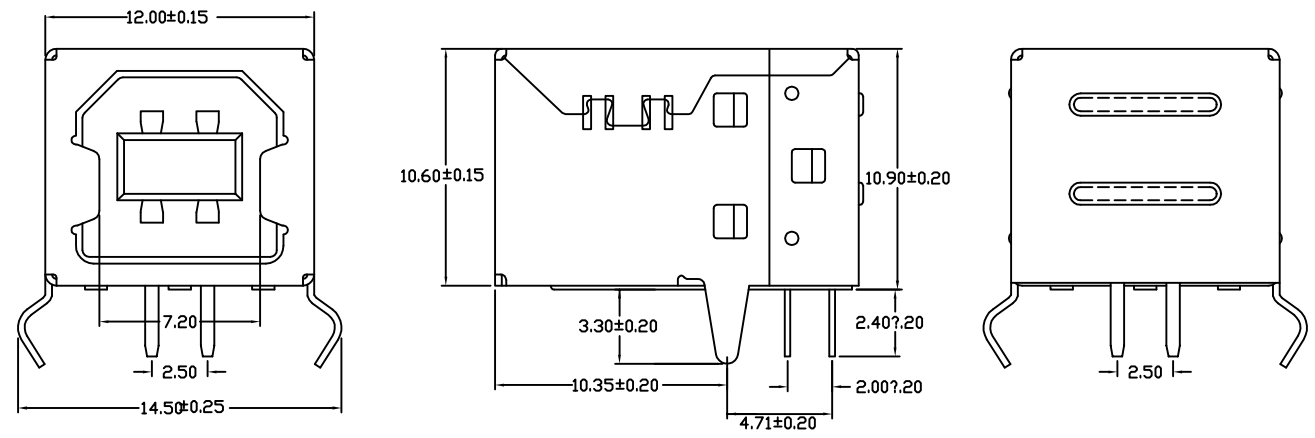
1. Connector Mate and Unmate Force
Mate force: 3.75kgf (MAX)
Unmate force: 1.02kgf (MIN)
2. Terminal Retention
1.2kgf (MIN)

Material:

1. Housing:
Hing Temperature Thermoplastics,
UL 94V-0 PBT White
2. Contact: Copper Alloy C2680
3. Shell: Copper Alloy C2680/SPCC

Finish:

1. Contact: Plated Gold in Mating Area;
Tin On Solder Talls
2. Shell:
Nickel Plating



Recommended P.C.B Layout

		深圳市华德共创科技有限公司 Shenzhen Huade co-create Technology Co.,LTD 电话：0755-27111216 传真：0755-29940187						
-TOLERANCES- UNLESS OTHERWISE SPECIFIED 公差参数表				TITLE: 产品名称: USB BF90度弯脚黑胶				
X.X	±0.30	X.X*	±3°	APPD: 核准:	PART NO: 产品编号: USB-HXS-130DIP			
X.XX	±0.20	X.XX*	±2°	CHECK: 校对: 王建业	DATE	SCALE	UNIT	CODE NUMBER
X.XXX	±0.10	X.XXX*	±1°	DRAW: 绘图: 黄艳兰	2016-03-12	1:1	mm	A001

由 Autodesk 教育版产品制作

由 Autodesk 教育版产品制作