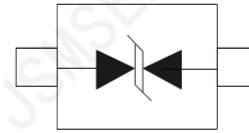
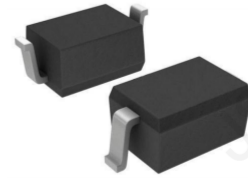


Features

- 320Watts peak pulse power ($t_p = 8/20\mu s$)
- Bidirectional configurations
- Solid-state silicon-avalanche technology
- Low clamping voltage
- Low leakage current
- IEC 61000-4-2 $\pm 30kV$ contact $\pm 30kV$ air
- IEC 61000-4-4 (EFT) 40A(5/50ns)
- IEC 61000-4-5 (Lightning) 10A(8/20 μs)



SOD-323

Applications

- Microprocessor based equipment
- Personal Digital Assistants (PDA's)
- Notebooks, Desktops, and Servers
- Portable Instrumentation
- Pagers Peripherals

Mechanical Data

- SOD323 package
- Packaging: Tape and Reel
- RoHS/WEEE Compliant

Absolute Maximum Rating

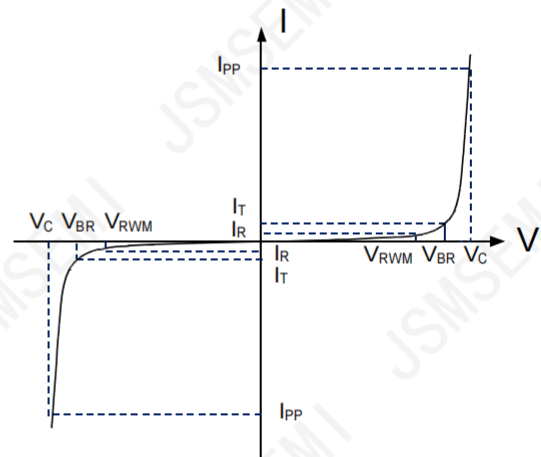
| Rating | Symbol | Value | Units |
|--|-----------|----------------|-------------|
| Peak Pulse Power ($t_p = 8/20\mu s$) | P_{PP} | 320 | Watts |
| Peak Pulse Current ($t_p = 8/20\mu s$) (note1) | I_{pp} | 10 | A |
| ESD per IEC 61000-4-2 (Air) ESD per IEC 61000-4-2 (Contact) | V_{ESD} | 30 30 | kV |
| Lead Soldering Temperature | T_L | 260(10seconds) | $^{\circ}C$ |
| Junction Temperature | T_J | -55 to + 150 | $^{\circ}C$ |
| Storage Temperature | T_{stg} | -55 to + 150 | $^{\circ}C$ |

Electrical Characteristics

| Parameter | Symbol | Conditions | Min | Typical | Max | Units |
|---------------------------|-----------|------------------------------|------|---------|------|---------|
| Reverse Stand-Off Voltage | V_{RWM} | | | | 15.0 | V |
| Reverse Breakdown Voltage | V_{BR} | $I_T=1mA$ | 16.7 | | | V |
| Reverse Leakage Current | I_R | $V_{RWM}=15V, T=25^{\circ}C$ | | | 0.5 | μA |
| Clamping Voltage | V_C | $I_{PP}=10A, t_p=8/20\mu s$ | | | 32 | V |
| Junction Capacitance | C_j | $V_R = 0V, f = 1MHz$ | | 20 | | pF |

Electrical Parameters (TA = 25°C unless otherwise noted)

| Symbol | Parameter |
|-----------|---|
| I_{PP} | Maximum Reverse Peak Pulse Current |
| V_C | Clamping Voltage @ I_{PP} |
| V_{RWM} | Working Peak Reverse Voltage |
| I_R | Maximum Reverse Leakage Current @ V_{RWM} |
| V_{BR} | Breakdown Voltage @ I_T |
| I_T | Test Current |
| | |
| | |



Note: 8/20 μs pulse waveform.

Typical Characteristics

Figure 1: Peak Pulse Power vs. Pulse Time

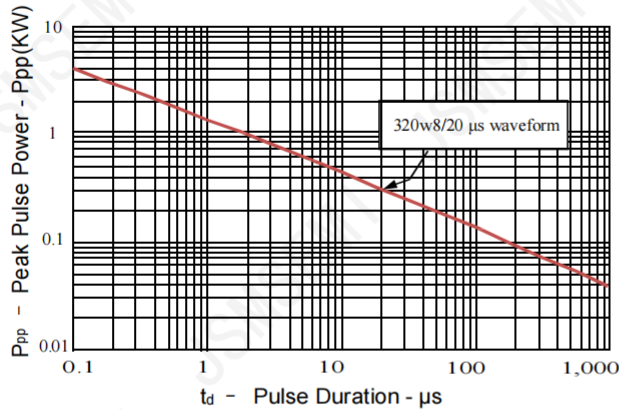


Figure 2: Power Derating Curve

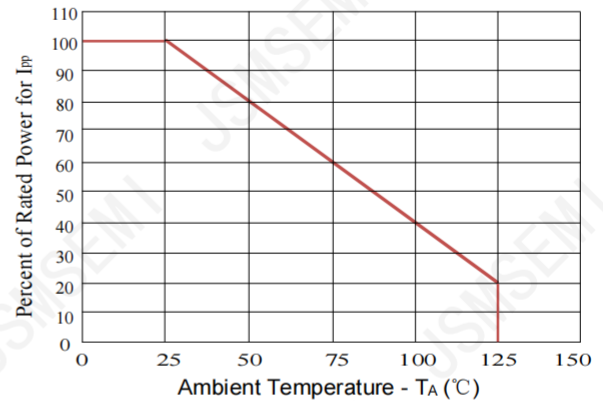


Figure3: Pulse Waveform

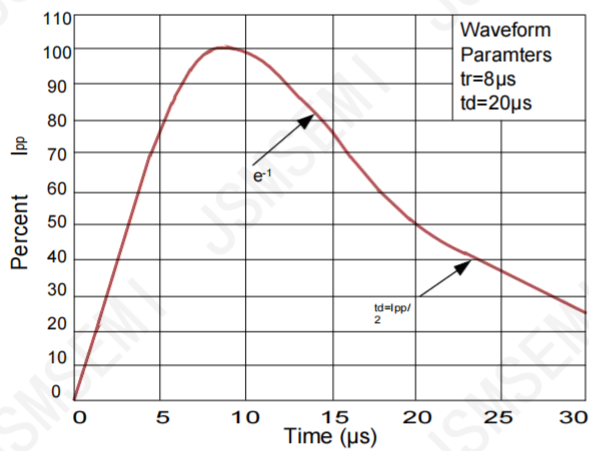
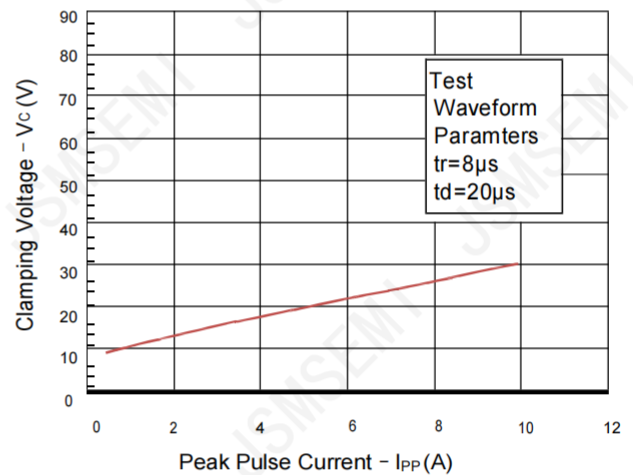
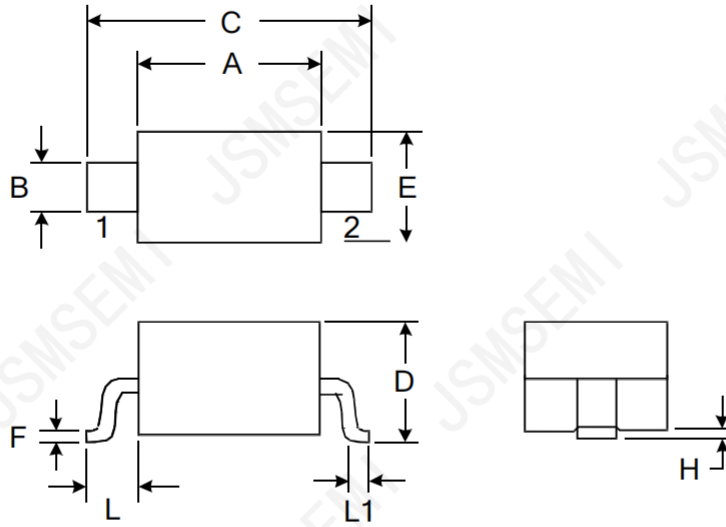


Figure 4: Clamping Voltage vs. Ipp



Outline Drawing – SOD323



| DIMENSIONS | | | | |
|------------|------------|-------|----------|-------|
| SYMBOL | MILLIMETER | | INCHES | |
| | MIN | MAX | MIN | MAX |
| A | 1.600 | 1.800 | 0.063 | 0.071 |
| B | 0.250 | 0.350 | 0.010 | 0.014 |
| C | 2.500 | 2.700 | 0.098 | 0.106 |
| D | | 1.000 | | 0.039 |
| E | 1.200 | 1.400 | 0.047 | 0.055 |
| F | 0.080 | 0.150 | 0.003 | 0.006 |
| L | 0.475 REF | | 0.019REF | |
| L1 | 0.250 | 0.400 | 0.010 | 0.016 |
| H | 0.000 | 0.100 | 0.000 | 0.004 |

Revision History

| Rev. | Change | Date |
|------|-----------------|-----------|
| V1.0 | Initial version | 2/23/2024 |
| | | |

Important Notice

JSMSEMI Semiconductor (JSMSEMI) PRODUCTS ARE NEITHER DESIGNED NOR INTENDED FOR USE IN MILITARY AND/OR AEROSPACE, AUTOMOTIVE OR MEDICAL DEVICES OR SYSTEMS UNLESS THE SPECIFIC JSMSEMI PRODUCTS ARE SPECIFICALLY DESIGNATED BY JSMSEMI FOR SUCH USE. BUYERS ACKNOWLEDGE AND AGREE THAT ANY SUCH USE OF JSMSEMI PRODUCTS WHICH JSMSEMI HAS NOT DESIGNATED FOR USE IN MILITARY AND/OR AEROSPACE, AUTOMOTIVE OR MEDICAL DEVICES OR SYSTEMS IS SOLELY AT THE BUYER' S RISK.

JSMSEMI assumes no liability for application assistance or customer product design. Customers are responsible for their products and applications using JSMSEMI products.

Resale of JSMSEMI products or services with statements diferent from or beyond the parameters stated by JSMSEMI for that product or service voids all express and any implied warranties for the associated JSMSEMI product or s ervice. JSMSEMI is not responsible or liable for any such statements.

JSMSEMI All Rights Reserved. Information and data in this document are owned by JSMSEMI wholly and may not be edited, reproduced, or redistributed in any way without the express written consent from JSMSEMI.

Any and all information described or contained herein are subject to change without notice due to product/technology improvement, etc. When designing equipment, refer to the "Delivery Specification" for the JSMSEMI product that you intend to use.

For additional information please contact Kevin@jsmsemi.com or visit www.jsmsemi.com