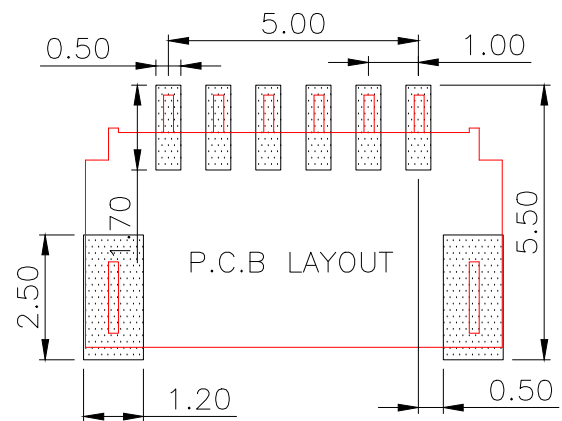
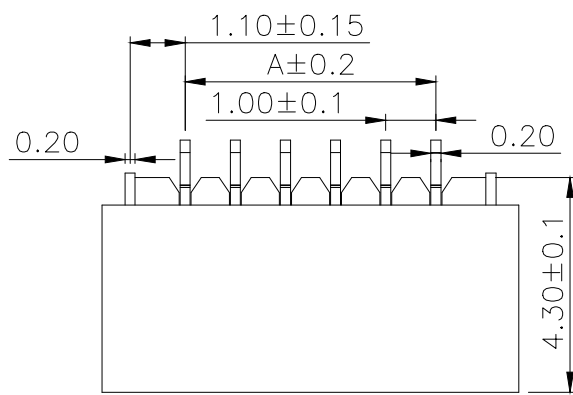
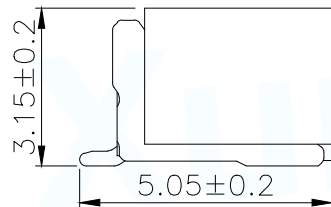
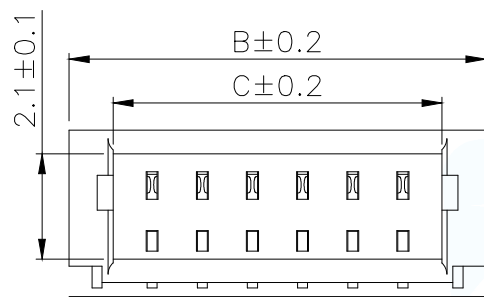


Part No	Pin	A	B	C
WAFER-SH1.0-2PWB	2	1.00	4.35	2.60
WAFER-SH1.0-3PWB	3	2.00	5.35	3.60
WAFER-SH1.0-4PWB	4	3.00	6.35	4.60
WAFER-SH1.0-5PWB	5	4.00	7.35	5.60
WAFER-SH1.0-6PWB	6	5.00	8.35	6.60
WAFER-SH1.0-7PWB	7	6.00	9.35	7.60
WAFER-SH1.0-8PWB	8	7.00	10.35	8.60
WAFER-SH1.0-9PWB	9	8.00	11.35	9.60
WAFER-SH1.0-10PWB	10	9.00	12.35	10.60
WAFER-SH1.0-11PWB	11	10.00	13.35	11.60
WAFER-SH1.0-12PWB	12	11.00	14.35	12.60
WAFER-SH1.0-13PWB	13	12.00	15.35	13.60
WAFER-SH1.0-14PWB	14	13.00	16.35	14.60
WAFER-SH1.0-15PWB	15	14.00	17.35	15.60
WAFER-SH1.0-16PWB	16	15.00	18.35	16.60
WAFER-SH1.0-20PWB	20	19.00	22.35	20.60



NOTES:

- 1.BASE: LCP
- 2.PIN: Brass
- 3.Solder Tab: Brass

SPECIFICATIONS:

- 1.Spacing: 1.0
- 2.Voltage Rating: 50V AC DC
- 3.Current Rating: 1A AC DC
- 4.Insulation Resistance: 100MΩ Min
- 5.Contact Resistance: 30mΩ Max
- 6.Withstanding voltage: 250V AC 1/Minute
- 7.Temperatuer Range: $-40^{\circ}\text{C} \sim +85^{\circ}\text{C}$

MANUFACTURE DWG		东莞市讯普电子科技有限公司 DongGuan XunPu Electronics Co.,Ltd	
UNLESS OTHERWISE SPECIFIED TOLERANCES		TITLE: WAFER 1.00 贴片	
		PAR	WAFER-SH1.0-NPWB
DECIMALS:	ANGLES:	DWN	
X.:±0.2	X':.:±5°	CHKD	
.X.:±0.1	X.X':.:±3°	APVD	
.XX.:±0.05	X.XX':.:±1°	SCALE:1:1	UNIT:MM
CUSTOMER COPY		SIZE:A4	SHEET:1F1
			REV:A