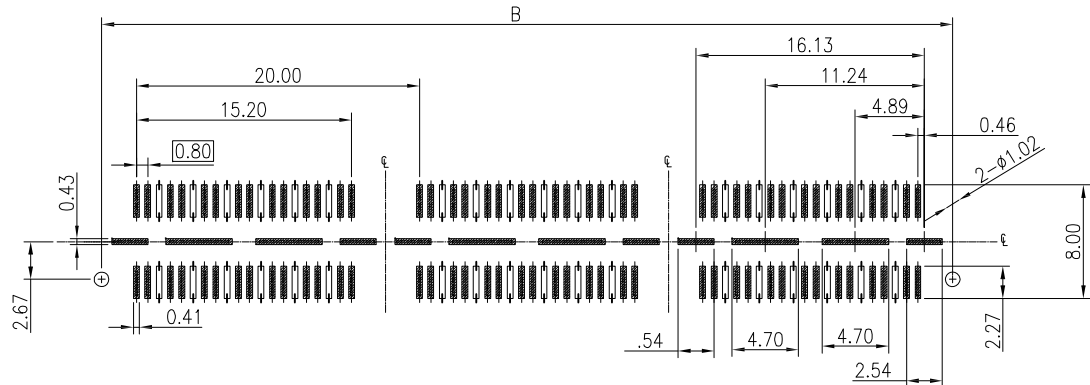
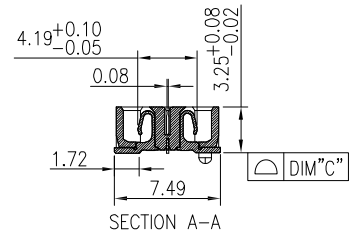
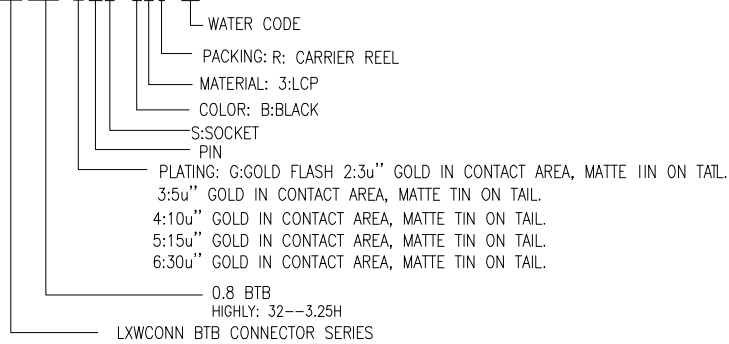


NOTES:

- HUOSING: LCP HIGH-TEMP THERMOPLASTIC UL94V-0 COLOR:BLACK
- TERMINAL/GROUND PLANE:PHOSPHOR BRONZE
PLATING:10u" GOLD IN CONTACT AREA, MATTE TIN ON TAIL.
- CODING INFORMATION: LXW332-xxxS-B3R-02



RECOMMENDED PCB PATTERN DIM.
TOLERANCE : ±0.05

NO. of contacts	Dimensions		
	A.	B.	C.
28	21.28	20.13	0.10
56	41.28	40.13	0.10
84	61.28	60.13	0.15
112	81.28	80.13	0.15
140	101.28	100.13	0.15

LXW 连兴旺电子(深圳)有限公司
LXWCONN ELECTRONICS (SHENZHEN) CO., LTD



修订 SER	修改摘要 REVISION DESCRIPTION	签名 SIGNATURE	日期 DATE	版本 (REV) A	一般公差 GENERAL TOLERANCE .X ±0.25 .XX ±0.20 .XXX ±0.10 ANGLES ±1°	制图 (DR): Kavin 2019.09.07	品名 (TITLE): 0.8mm DOUBLE ROW BTB SOCKET H3.25
					审核 (CHKD):	料号 (PART NO.): LXW332-XXXS-B3R-02 (QSE)	比例 (SCALE): 1:8
					核准 (APPD):	单位 (UNITS): mm	张数 (SHEET): 1 OF 1
							图幅 (SIZE): A4