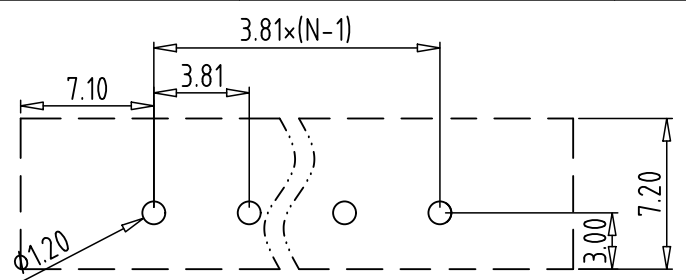


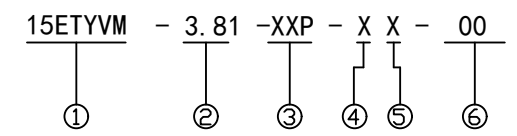
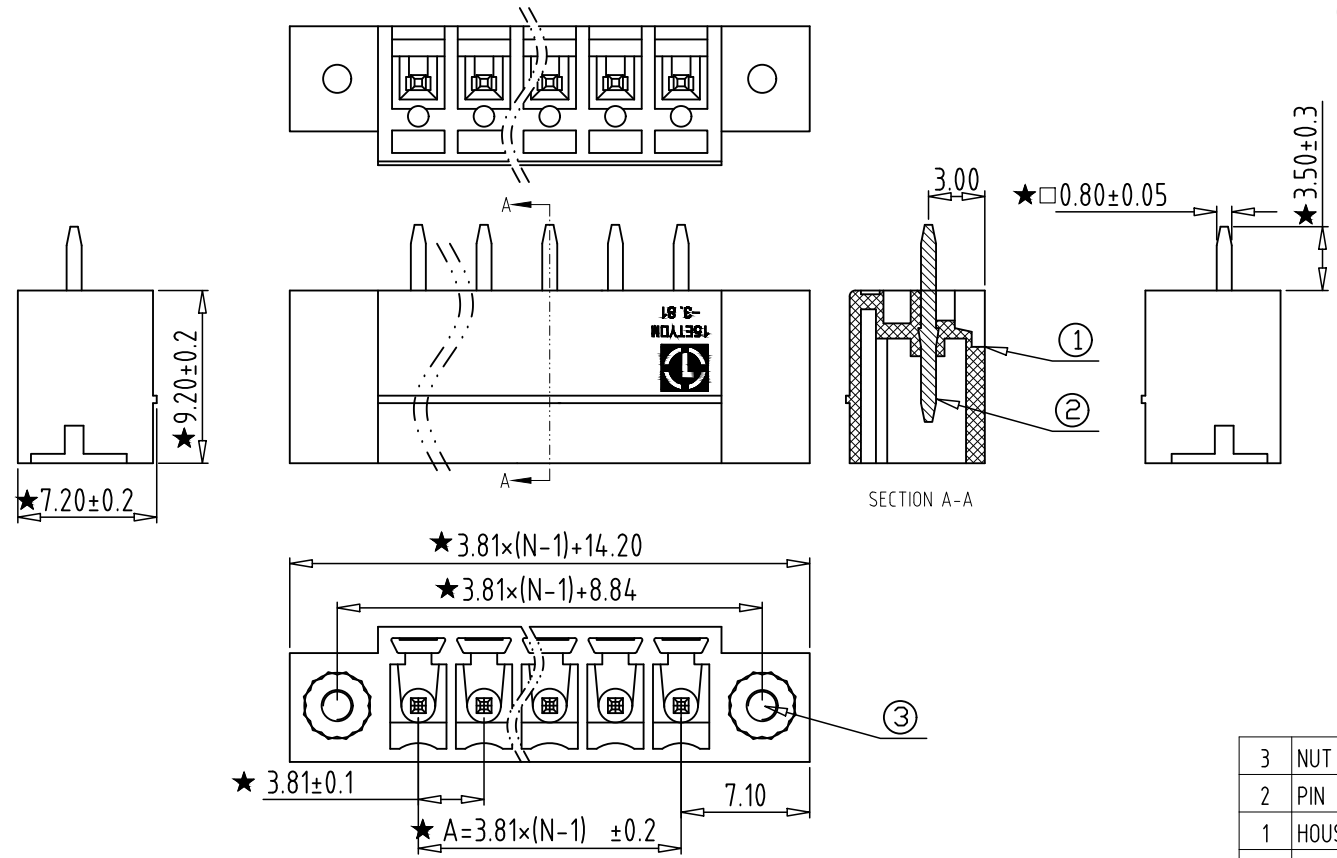
REV	CONTENT	CHK	DATE
VO.0	CONTENT	YL	22.11.25

**Electrical :**

- |   |               |      |
|---|---------------|------|
|   | UL            | IEC  |
| 1.Rated Voltage :                         | 300V          | 250V |
| 2.Rated Current :                         | 8A            | 7A   |
| 3.Withstanding Voltage :                  | AC1600V/1Min; |      |
| 4.Operating Temperature :                 | -40°C~+105°C; |      |
| 5. RoHS Compliance;                       |               |      |
| 6." ★ " is the key quality control point. |               |      |



**PCB LAYOUT**



- ① Series NO.
- ② Pitch
- ③ Poles  
02 02Contacts  
03 03Contacts  
...  
24 24Contacts
- ④ 1 Single Pitch  
2 Double Pitch
- ⑤ Color: 1 Grey  
2 Blue  
3 Black  
4 Green  
5 Orange  
6 Red  
7 Transparent  
8 Yellow  
9 White
- ⑥ Customer Request: 00--Standard

Total Pitch Tolerances in mm										Nominal dimension range in mm														
over	over	over	over	over	over	over	over	over	over	over	over	over	over	over	over	over	over	over	over	±	=	over	over	over
0	30	53	70	90	115	150	250	350	500	0	30	53	70	90	115	150	200	250	320	10	all	0	100	150
to	to	to	to	to	to	to	to	to	to	to	to	to	to	to	to	to	to	to	to			to	to	to
30	53	70	90	115	150	250	350	500		30	53	70	90	115	150	200	250	320	10			100	150	
±0.18	±0.20	±0.25	±0.3	±0.35	±0.44	±0.60	±0.70	±0.85	±0.20	±0.25	±0.30	±0.35	±0.44	±0.55	±0.70	±0.80	±0.90	0.2	0.3	0.3	0.2	0.3	0.5	

3	NUT	XX	2	BRASS	/
2	PIN	XX	N	BRASS	Tin Plated
1	HOUSING	XX	1	PA66 UL94V-0	SEE NOTE
ITEM	NAME OF PART	NO. OF PART	Q'TY	MATERIAL	NOTE
DWG.	YL	DATE	22.11.25	SIZE	A4 UNITS mm SHEET/OF 1/1
CHK.	DATE		SCALE	1:1	
APP.	DATE			NAME 15ETYVM-3.81-XXP-XX-00	
				DWGNO.	XXXXX