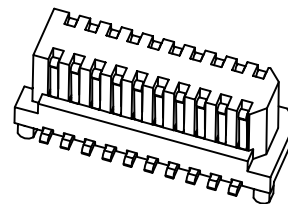
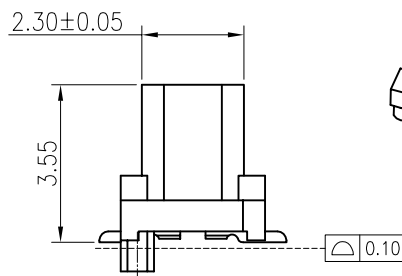
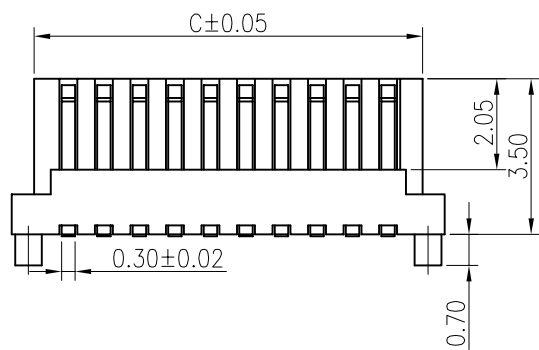
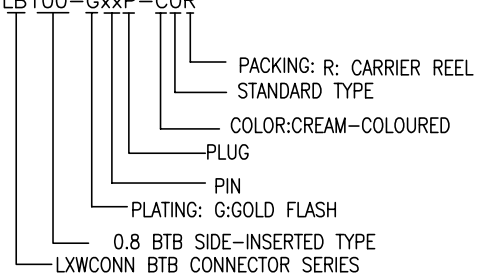


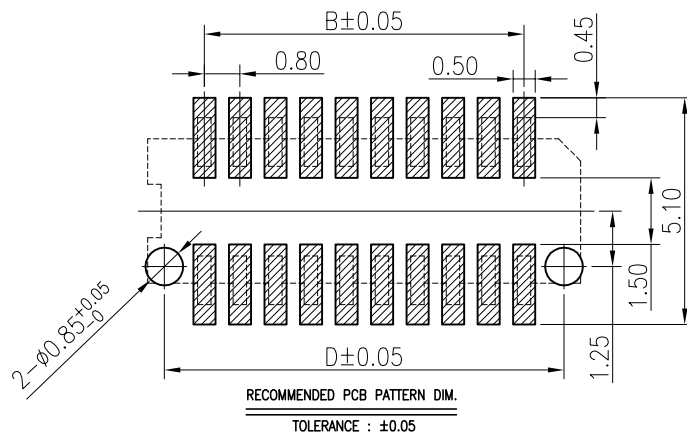
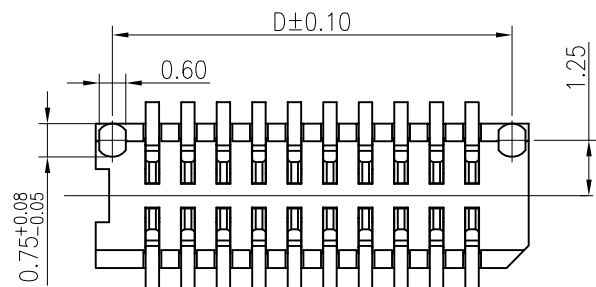
NOTES:

- 1.HUOSING: LCP HIGH-TEMP THERMOPLASTIC UL94V-0 COLOR:CREAM-COLOURED
- 2.TERMINAL:PHOSPHOR BRONZE
PLATING:1μ" GOLD FLASH OVERALL 50~100μ" NICKEL UNDER PLATED.
- 3.CODING INFORMATION: LB100-GxxP-COR



3D VIEW

NO. of contacts	Dimensions			
	A	B	C	D
4	3.35	0.80	2.35	2.60
6	4.15	1.60	3.15	3.40
8	4.95	2.40	3.95	4.20
10	5.75	3.20	4.75	5.00
12	6.55	4.00	5.55	5.80
14	7.35	4.80	6.35	6.60
16	8.15	5.60	7.15	7.40
18	8.95	6.40	7.95	8.20
20	9.75	7.20	8.75	9.00
22	10.55	8.00	9.55	9.80
24	11.35	8.80	10.35	10.60
26	12.15	9.60	11.15	11.40
28	12.95	10.40	11.95	12.20
30	13.75	11.20	12.75	13.00
32	14.55	12.00	13.55	13.80
34	15.35	12.80	14.35	14.60
36	16.15	13.60	15.15	15.40
38	16.95	14.40	15.95	16.20
40	17.75	15.20	16.75	17.00
42	18.55	16.00	17.55	17.80
44	19.35	16.80	18.35	18.60
46	20.15	17.60	19.15	19.40
48	20.95	18.40	19.95	20.20
50	21.75	19.20	20.75	21.00
52	22.55	20.00	21.55	21.80
60	25.75	23.20	24.75	25.00
70	29.75	27.20	28.75	29.00
80	33.75	31.20	32.75	33.00



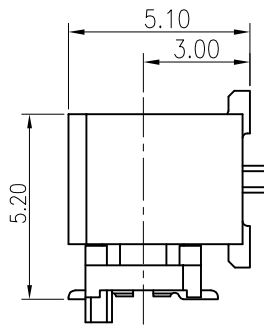
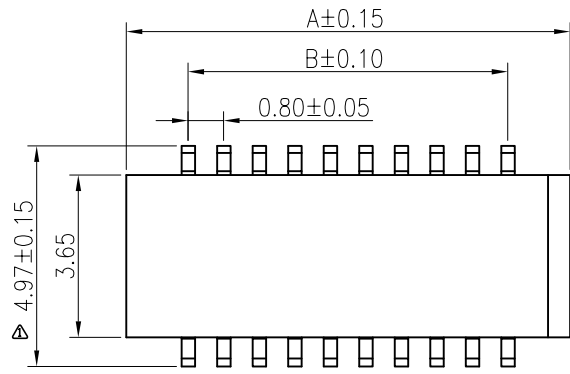
LXW 连兴旺电子(深圳)有限公司
connectivity LXWCONN ELECTRONICS (SHENZHEN) CO., LTD

RoHS Compliant 2013/95/EC

修订 SR	修改摘要 REVISION DESCRIPTION	签名 SIGNATURE	日期 DATE
		Kavin	08/15/17

一般公差
GENERAL TOLERANCE
.X ±0.25
.Y ±0.15
.XXX ±0.05
ANGLES ±1°

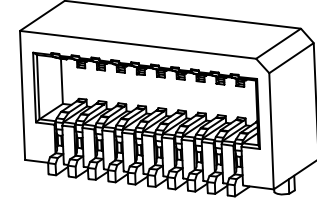
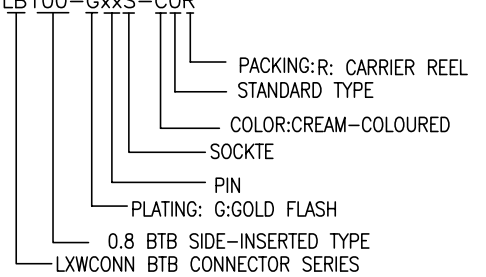
制图 (DR): Kavin 2018.07.05	品名 (TITLE): 0.8mm 侧插BTB PLUG
审核 (CHKD):	料号 (PART NO): LB100-GxxP-COR
核准 (APPD):	比例 (SCALE): 1:8 单位 (UNITS): mm 张数 (SHEET): 1 OF 1 图幅 (SIZE): A4



MATING HEIGHT
SCALE:1.25:1

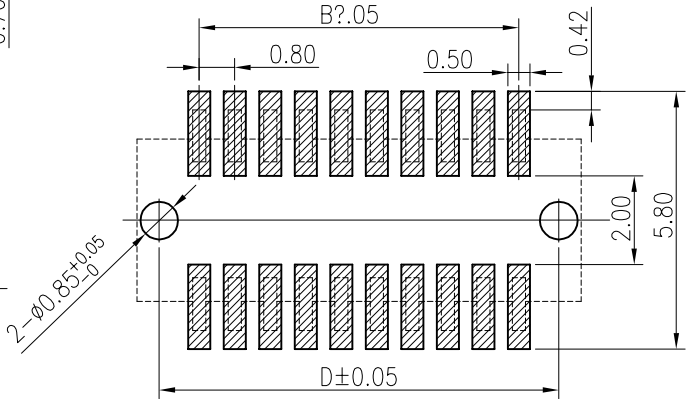
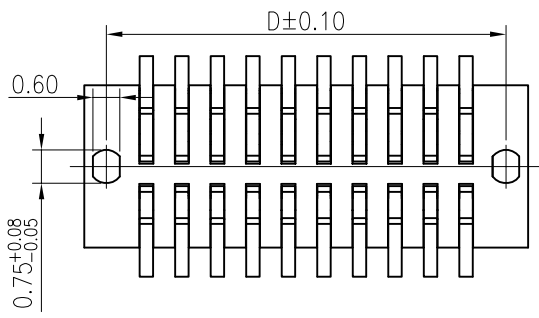
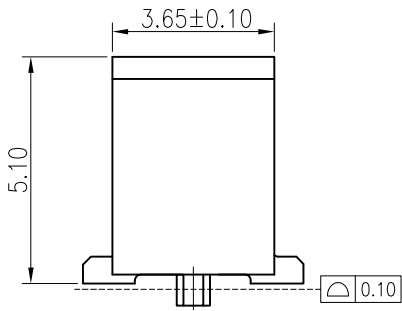
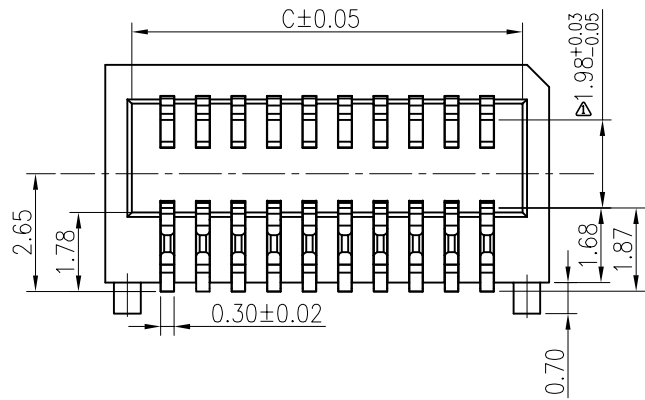
NOTES:

- 1.HUOSING: LCP HIGH-TEMP THERMOPLASTIC UL94V-0 COLOR:CREAM-COLOURED
- 2.TERMINAL:PHOSPHOR BRONZE
PLATING:1μ" GOLD FLASH OVERALL 50~100μ" NICKEL UNDER PLATED.
- 3.CODING INFORMATION: LB100-GxxS-COR



3D VIEW

NO. of contacts	Dimensions			
	A	B	C	D
4	3.60	0.80	2.45	2.60
6	4.40	1.60	3.25	3.40
8	5.20	2.40	4.05	4.20
10	6.00	3.20	4.85	5.00
12	6.80	4.00	5.65	5.80
14	7.60	4.80	6.45	6.60
16	8.40	5.60	7.25	7.40
18	9.20	6.40	8.05	8.20
20	10.00	7.20	8.85	9.00
22	10.80	8.00	9.65	9.80
24	11.60	8.80	10.45	10.60
26	12.40	9.60	11.25	11.40
28	13.20	10.40	12.05	12.20
30	14.00	11.20	12.85	13.00
32	14.80	12.00	13.65	13.80
34	15.60	12.80	14.45	14.60
36	16.40	13.60	15.25	15.40
38	17.20	14.40	16.05	16.20
40	18.00	15.20	16.85	17.00
42	18.80	16.00	17.65	17.80
44	19.60	16.80	18.45	18.60
46	20.40	17.60	19.25	19.40
48	21.20	18.40	20.05	20.20
50	22.00	19.20	20.85	21.00
52	22.80	20.00	21.65	21.80
60	26.00	23.20	24.85	25.00
70	30.00	27.20	28.85	29.00
80	34.00	31.20	32.85	33.00



RECOMMENDED PCB PATTERN DIM.

TOLERANCE : ±0.05

LXW 连兴旺电子(深圳)有限公司
connectivity LXWCONN ELECTRONICS (SHENZHEN) CO., LTD

RoHS Compliant
2013/95/EC

新增焊锡脚位尺寸及接触GAP值	Kavin	08/15/17
修订 SR	修改摘要 REVISION DESCRIPTION	签名 SIGNATURE
	日期 DATE	版本 (REV)

一般公差
GENERAL TOLERANCE
.X ±0.25
.Y ±0.15
.XXX ±0.05
ANGLES ±1°

制图 (DR): Kavin 2018.07.05	品名 (TITLE): 0.8mm 侧插BTB SOCKET
审核 (CHKD):	料号 (PART NO): LB100-GxxS-COR
核准 (APPD):	比例 (SCALE): 1:8 单位 (UNITS): mm 张数 (SHEET): 1 OF 1 图幅 (SIZE): A4