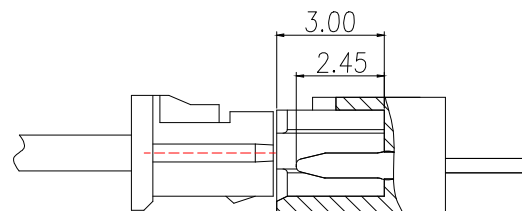
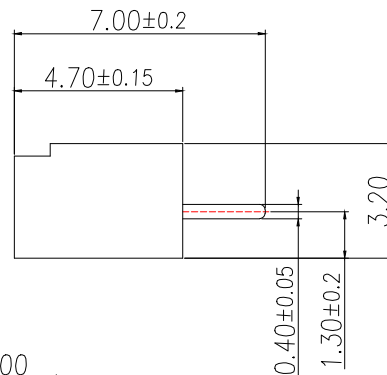


Technical Index:

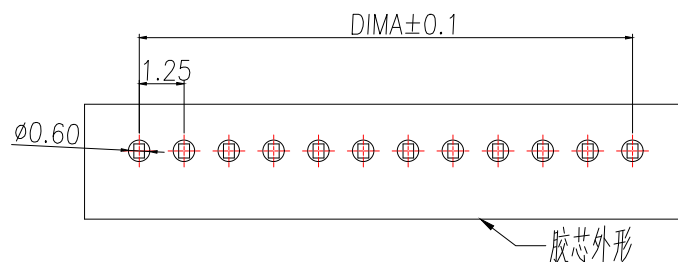
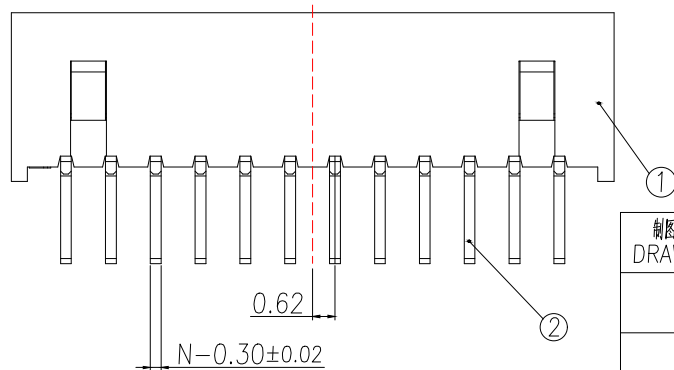
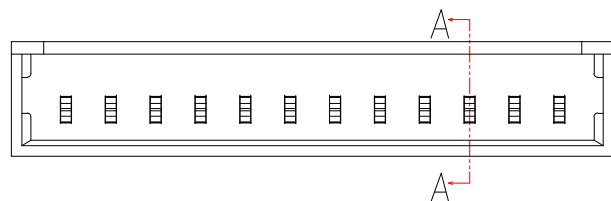
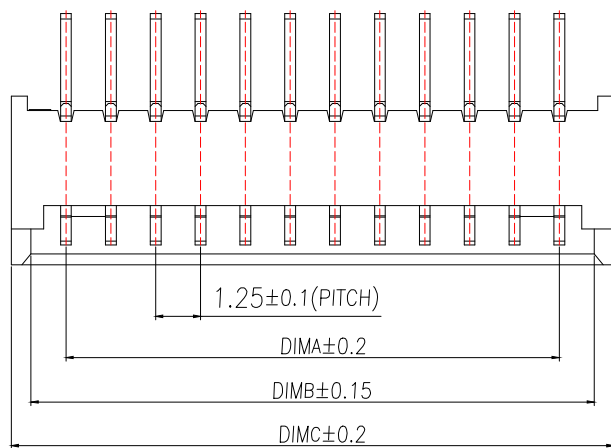
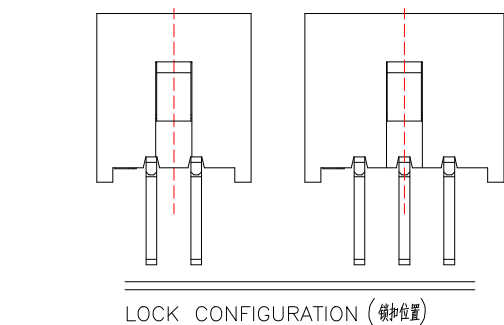
- 1.The surface of the plastic parts should be smooth,no rough edges,no obvious shrinkage,defects,cracks and other phenomena)
- 2.Lock Configuration: 2 to 3Pin is 1, ≥4Pin is 2
- 3.Temperature range: -40°C~+85°C.
- 4.Rated voltage: 125V.AC/DC.
- 5.Contact resistance: ≤0.02Ω.
- 6.Insulation resistance: ≥100MΩ

Part No	Pin	A	B	C
BX-MX1.25-2PZZ-R	2	1.25	3.20	4.30
BX-MX1.25-3PZZ-R	3	2.50	4.45	5.55
BX-MX1.25-4PZZ-R	4	3.75	5.70	6.80
BX-MX1.25-5PZZ-R	5	5.00	6.95	8.05
BX-MX1.25-6PZZ-R	6	6.25	8.20	9.30
BX-MX1.25-7PZZ-R	7	7.50	9.45	10.55
BX-MX1.25-8PZZ-R	8	8.75	10.70	11.80
BX-MX1.25-9PZZ-R	9	10.00	11.95	13.05
BX-MX1.25-10PZZ-R	10	11.25	13.20	14.30
BX-MX1.25-11PZZ-R	11	12.50	14.45	15.55
BX-MX1.25-12PZZ-R	12	13.75	15.70	16.80
BX-MX1.25-13PZZ-R	13	15.00	16.95	18.05
BX-MX1.25-14PZZ-R	14	16.25	18.20	19.30
BX-MX1.25-15PZZ-R	15	17.50	19.45	20.55
BX-MX1.25-16PZZ-R	16	18.75	20.70	21.80
BX-MX1.25-17PZZ-R	17	20.00	21.95	23.05
BX-MX1.25-18PZZ-R	18	21.25	23.20	24.30
BX-MX1.25-19PZZ-R	19	22.50	24.45	25.55
BX-MX1.25-20PZZ-R	20	23.75	25.70	26.80

序号	品名	材质
1	1.25 Pitch S/T Wire To Board Housing DIP(H=4.7)	PA66 UL94V-2 Red
2	1.25 Pitch S/T Wire To Board Terminal DIP(H=4.7)	Copper Alloy/ Tin Plating



SECTION A-A



适用线路板(PCB LAYOUT)

制图 DRAWN	变更内容 DESCRIPTION	日期 DATE	GENERAL TOLERANCE		制图 DRAWING	EMMA	料号 PART NO.	BX-MX1.25-NPZZ-R	版本 REV.	A
			X.±0.50	X'.:±5°						
			.X±0.20	X.X':±3°	核准 APPROVAL	JADE	客户料号 CUTM.NO.			
			.XX±0.10	X.XX':±1°	单位 UNITS	MM	比例 SCALE	1:1		

