

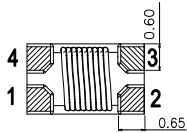
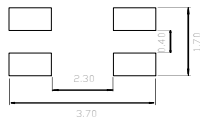
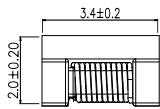
CHIP COMMON MODE CHOKE

- 1.1 High common mode impedance at high frequency effects excellent noise suppression performance.
- 1.2 CND-DCM321620F2SF-600 Series realizes small size and low profile.
- 1.3 100% Lead(Pb) & Halogen-Free and RoHS compliant.
- 1.4 Operating Temperature range: -40~ +125 °C
- 1.5 Storage temperature range: -40~ +125 °C

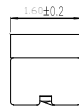


Part Number	Electrical Specifications @25°C						
	Inductance 100KHz 0.1V (uH Min)	Capacitance 100K 0.1V (pF Max)	DCR (Ω Max)	Rated Current mA Max	Rated Volt (Vdc)	Withstand Volt 1mA 1S (Vdc Max)	IR M(Ω Min)
DCM321620SF-600	60	25	1.70	200	50	125	10

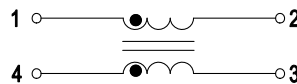
MECHANICAL



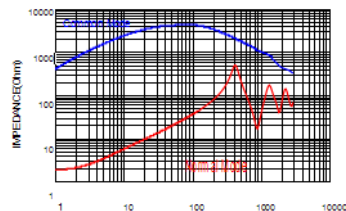
BOTTOM VIEW



SCHEMATICS

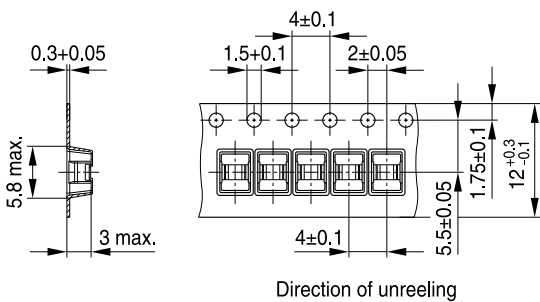


IMPEDEDANCE FREQUENCY



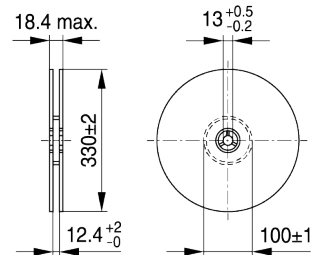
Unless otherwise specified all tolerances are:±0.25 in mm

TAPING AND PACKING



IND1752-J-E

Reel



IND1526-N

Quantity (pcs):
2400 PCS PER REEL
10 REELS PER CARTON
24000 PCS PER CARTON

Dimensions in mm