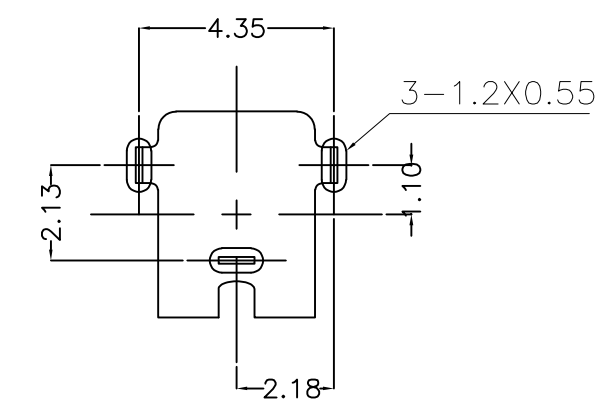
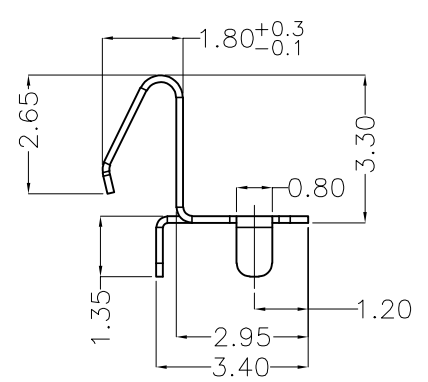
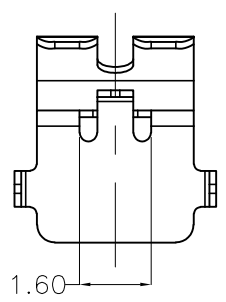
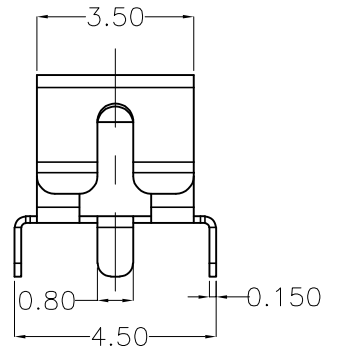
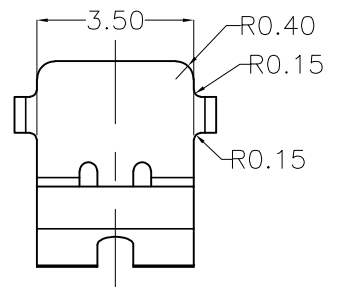




REV.	ECN NO.	REVISED	DATE



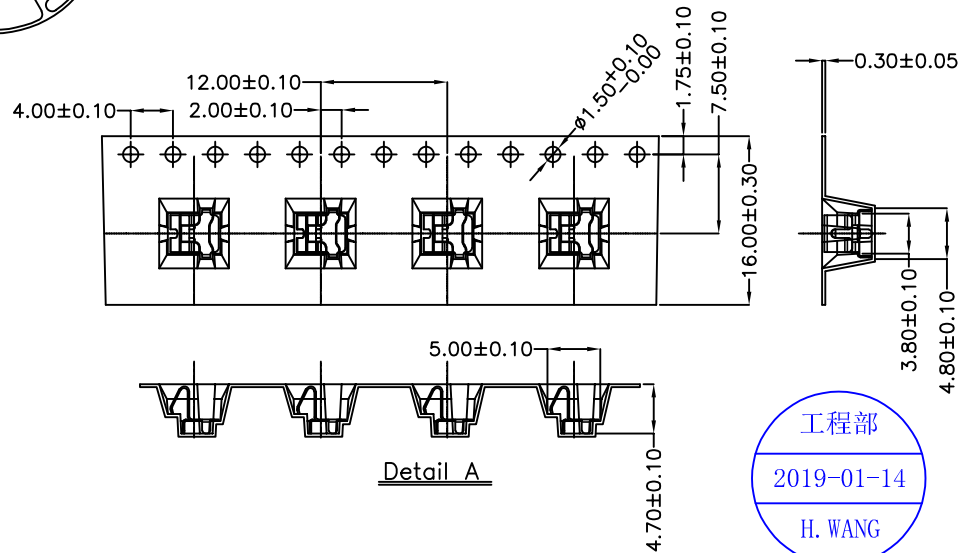
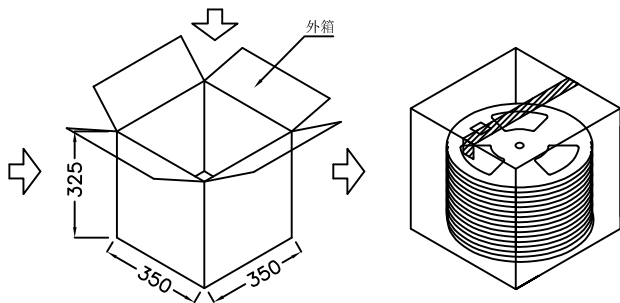
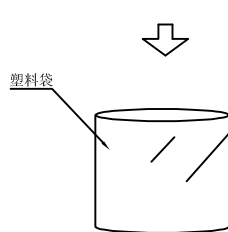
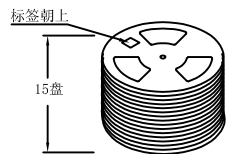
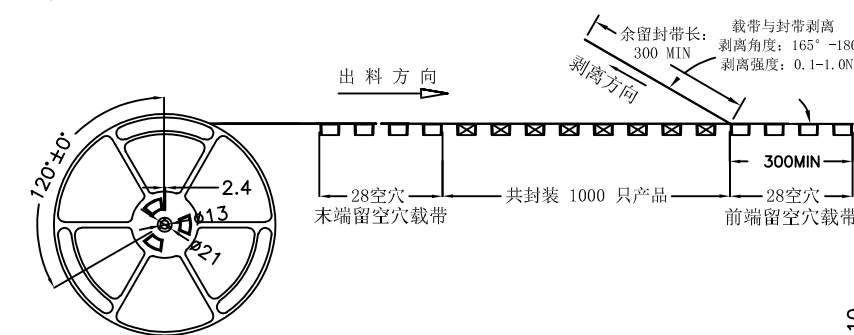
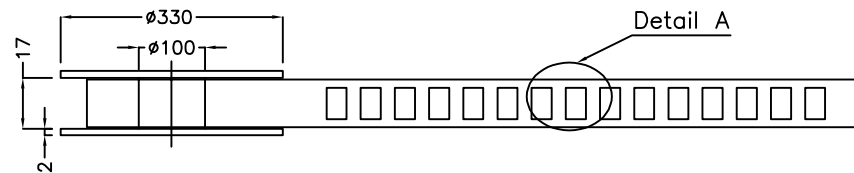
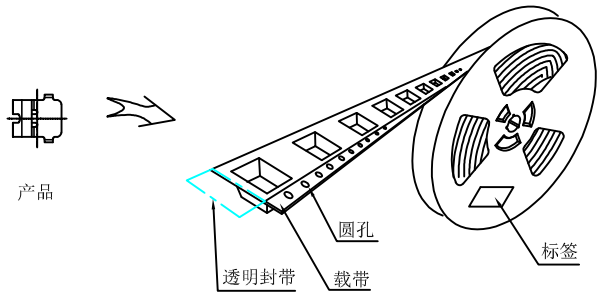
PCB Layout Diagram
Top View



- 技术要求:
- 1、截剪断面毛刺高度 $\leq 0.03\text{mm}$;
 - 2、部件要求平整,无变形、裂纹、损伤等外观缺陷;

UNLESS OTHERWISE SPECIFIED TOLERANCES		MYOUNG 美用 www.meiyangdz.com			
DECIMALS: X :±0.30 X.X :±0.25 X.XX :±0.20 X.XXX :±0.10	ANGLES: X :±1° X.X :±0.5°	DSND	YangFeng	DATE	2018-12-21
		CHKD	ZhouRuicai	DATE	2018-12-21
		APVD	XueShunyong	DATE	2018-12-21
WEIGHT:		SCALE:	1:1	SIZE:	A4
SHEET 1 OF 2		VIEW:			
		UNIT:	mm	REV.:	A/2
		OBJECT:	MY	TITLE: 电池接触片-111LM正极 卷装	
				PART NO.: MY-ZJ-111LM-R	
		DRAW NO.:MY-CP-0169			

1	TERMINAL+	1	SUS304 T=0.15MM	Au-Plating
NO.	PART NAME	Q'TY	MATERIAL	PLATING & COLOR



技术要求:

1. 圆孔十个孔距离累计允许公差为±0.2mm
2. 带长250mm内容许弯曲度1mm
3. 材料厚度以在载带边缘测量为准
4. 所有尺寸定义依循EIA-481-C系准则定义之
5. 材料:PS透明 T=0.30±0.05mm
6. 所有卷轮为灰蓝挖空旋转塑胶卷轮
7. 整模成型长度:12.672M,
8. 非指明公差范围为: ±0.1mm;超过250mm不计算累计误差
9. 型腔外形凡未标明处倒角R为0.2-0.3; 拔模斜度未标注的为3° 以下

包装信息:

- 1、每卷盘装产品 1000 只, 卷盘外侧贴相关标签;
- 2、每 15 卷盘放在一个塑料袋中;
- 3、每外箱装15盘, 产品总数: 15000 只;
- 4、外箱上下用胶纸封成“工”字;
- 5、电池接触片包材-111LM正极 DIP 卷装 (MY-ZJ-111LM-R)。

UNLESS OTHERWISE SPECIFIED TOLERANCES		MYOUNG 美阳 www.meiyangdz.com			
DECIMALS: X :±*** X.X :±*** X.XX :±*** X.XXX :±***	ANGLES: X :±*** X.X :±***	DSND WangHeng	DATE 2019-01-14	TITLE: 电池接触片-111LM正极 DIP 卷装	
WEIGHT:		CHKD ZhouRuicai	DATE 2019-01-14	PART NO.:	
SHEET 2 OF 2		APVD XueShun Yong	DATE 2019-01-14	MY-ZJ-111LM-R	
SCALE: 1:1		SIZE: A4	VIEW:	DRAW NO.:MY-BD-0024	
UNIT: mm		REV.: A/0	OBJECT: MY		