

1 2 3 4 5

A

B

C

D

E

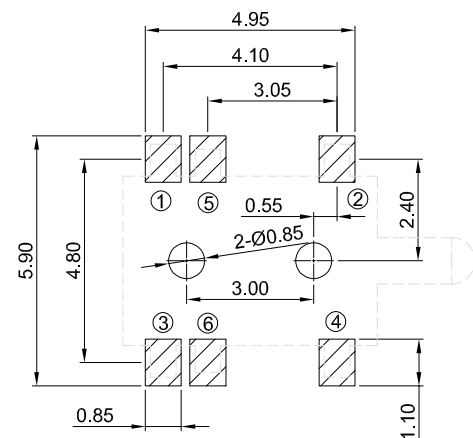
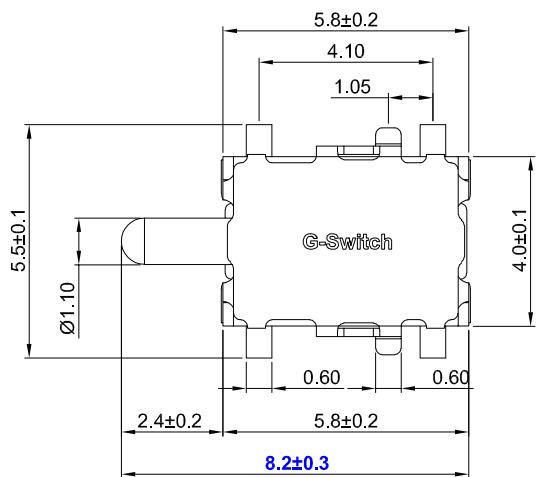
A

B

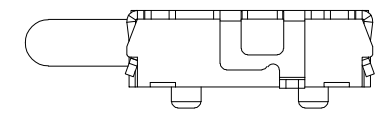
C

D

E



PCB REFERENCE DIAGRAM
TOLERANCE:±0.05



DS - S B008A-H082-L1 A

Detector Switch

Detail
A=With Pilot

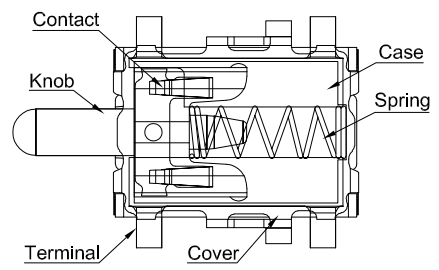
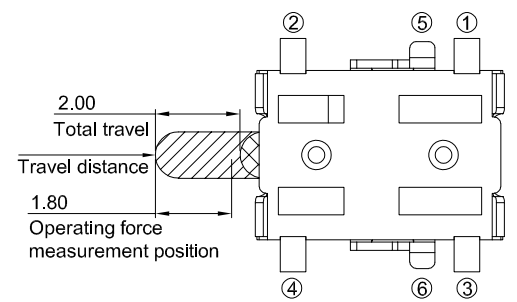
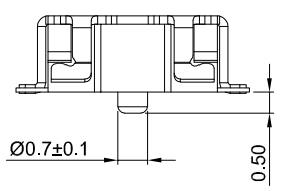
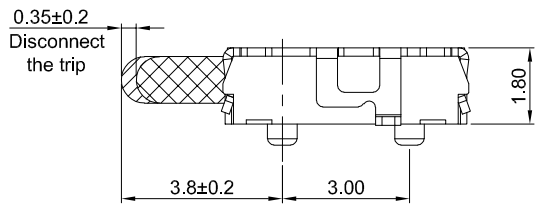
Installation
S=SMT

Structure
A=Normally open switch
B=Normally closed switch

Operating Force
A=100±30gf

Switch Height(mm)
H082=8.2

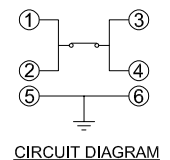
Switch Lifetime
L1=100,000 Cycles



G-Switch Specification:

1. Operating temperature range: -40°C ~ +85°C
2. Rating: 0.1A.12V DC
3. Insulation resistance: 100MΩ min. 100V DC
4. Dielectric strength: 100V AC for 1 min
5. Contact resistance: 200mΩ max.
6. Travel: 2.0±0.15mm

NO.	PART NAME	MATERIAL	REMARK
6	CONTACT	C5210	Ag PLATED
5	COVER	C7521	-
4	SPRING	STAINLESS STEEL	MATERIAL
3	TERMINAL	C5191	Ag PLATED
2	BASE	HIGH TEMPERATURE PLASTIC	LCP BLACK
1	PLUNGER	HIGH TEMPERATURE PLASTIC	PA BLACK



SCALE: 1:1 UNIT: mm
 SIZE: A4
 Unless otherwise General Tolerance:
 X.x ±0.20
 X.xx ±0.15
 X.xxx ±0.10
 X* ±2*

Title: Horizontal Detector Switch SMT 5.8×4.0×H8.2mm			
Molde Code: DS-SB008A-H082-L1A			
DRAWN	CHECKED	APPROVED	DATE
Jiang	Xia	Chen	2025.03.25

品赞科技
b-Switch
 www.dg-switch.com

REV: A0 SHEET: 1/1

1 2 3 4 5