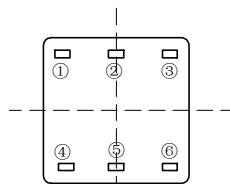
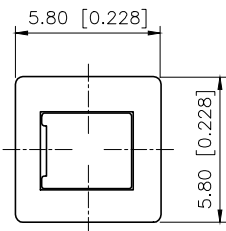
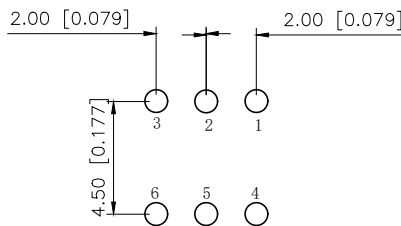


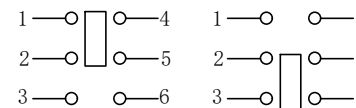
REVISIONS					
REV.	ECN NO.	LOCATION	DESCRIPTION	DATE	DESIGN
A1	N/A		图面升级整理图面	2025.06.23	阿树
A2	ECN-P-2026043001	(A2)X1	产品材质变更	2026.04.30	山楂



向视图



P.C.B LAYOUT



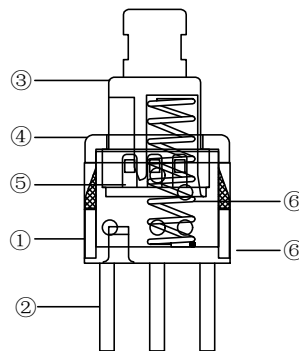
常态: 1-2导通 4-5导通
按下: 2-3导通 5-6导通

CIRCUIT DIAGRAM

Specifications (规格):

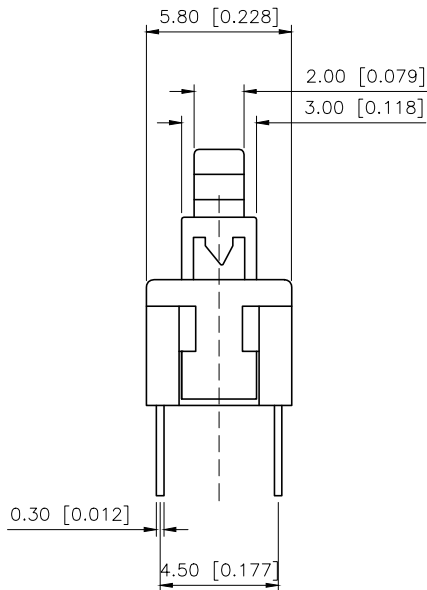
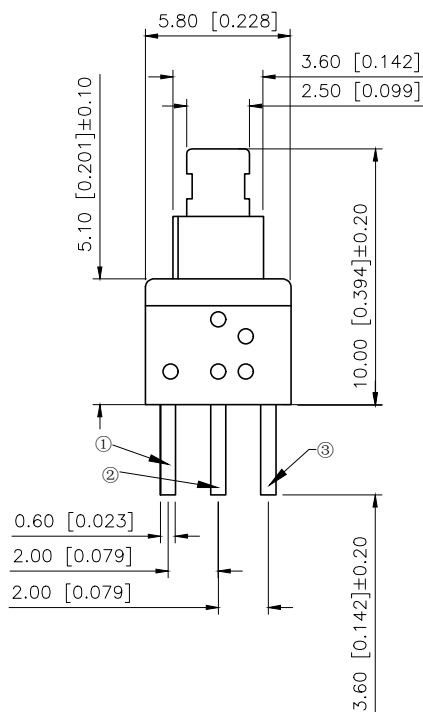
- 1.Voltage rating (额定电压): DC 30V
- 2.Current rating (额定电流): 100mA AC/DC
- 3.Withstanding voltage (耐压值): $\geq 250V$ AC/minute
- 4.Insulation resistance (绝缘电阻): $\geq 100M\Omega$ Min
- 5.Contact resistance (接触电阻): $\leq 200m\Omega$ Max
- 6.Mating cycles (使用寿命): 10000 cycles Min
- 7.Travel (行程): $2.0 \pm 0.20mm$
- 8.Operating force (按力): $250 \pm 50gf$
- 9.Temperature range (使用温度): $-40^{\circ}C \sim +85^{\circ}C$

PAPT NO	XKB5858-X
OPERATION	W:NO LOCK Z:LOCK



常闭型

6	Spring	1	Sus		Natural
5	Reeds	1	Composite Silver		Natural
4	Cover	1	PPA		Black
3	By handle	1	PPA		White
2	Terminal	1	Brass	Plating silvering	Natural
1	Pedestal	1	PPA		Gray
ITEM	PAPT NAMF	QTY	MATERIAL	FINISHING	COLOR



AuGLAR	$\pm 5^{\circ}$
X.	± 0.40
X.x	± 0.30
X.xx	± 0.20
X.xxx	± 0.15
UNSPECIFIED TOLERANCES	



DESIGN	山楂	VIEW:		MODEL TYPE:	KEY SWITCH
CHECKED		UNIT:	mm/in	PART NO.:	XKB5858-X
APPROVED		SIZE:	A4	DWG NO.:	

XKB INDUSTRIAL PRECISION CO., LIMITED

SCALE	PAGE	REVISION
N/A	1/1	A2