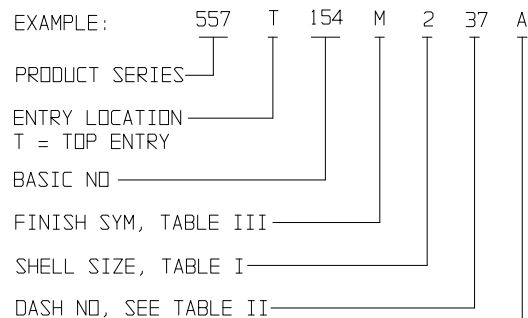


TABLE I									
SHELL SIZE	A	B	C	D ±.005	E	F ±.005	G	H	MAX DASH NO
1	1.328	.610	.75	.984	1.199	1.848	2.273		45
2	1.656	.610	.75	1.312	1.363	2.176	2.601		45
3	2.196	.610	1.00	1.852	1.633	2.716	3.141	1.000	45
4	2.844	.610	1.00	2.500	1.957	3.364	3.789	1.250	45
5	2.780	.720	1.25	2.406	1.925	3.300	3.725	1.200	60
6	2.844	.784	1.25	2.500	1.957	3.364	3.789	1.200	60

TABLE II			
DASH NO	J DIA	K DIA	L DIA
37	.375	.445	.485
45	.450	.520	.560
60	.600	.670	.710

TABLE III	
SYM	FINISH DESCRIPTION
M	ELECTROLESS NICKEL

PART NUMBER DEVELOPMENT



HOLE REQUIREMENT

A = DRILLED HOLE THRU B & C BLIND

B = DRILLED HOLE THRU A & C BLIND

C = DRILLED HOLE THRU A & B BLIND

D = A, B DRILL THRU C BLIND

E = B & C DRILL THRU A BLIND

F = A & C DRILL THRU B BLIND

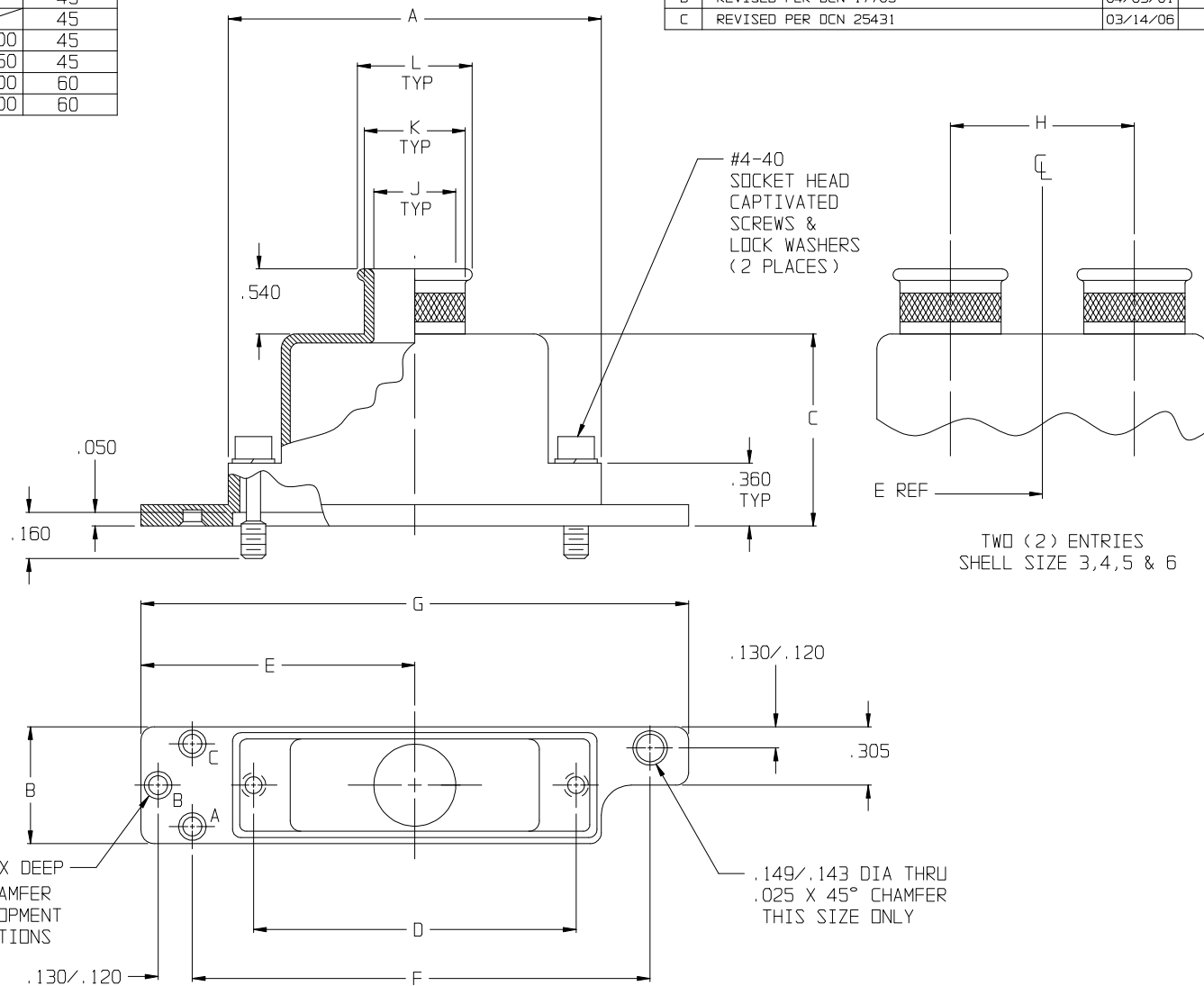
OMIT FOR 3 BLIND HOLES

△ .145 DIA X .115 MAX DEEP
 .025 X 45° CHAMFER
 SEE P/N DEVELOPMENT
 FOR HOLE POSITIONS
 DRILLED THRU

NOTES:

- ASSEMBLY IDENTIFICATION WITH MANUFACTURER'S NAME AND P/N, SPACE PERMITTING.
- EQUIVALENT TO HUGHES 1G44.
- △ ASSEMBLY TO BE SUPPLIED WITH 3 HOLES EITHER WITH 3 BLIND HOLES (WHEN OMITTED IN P/N DEVELOPMENT) OR 1 HOLE DRILLED THRU, WITH 2 BLIND HOLES. SEE PART NUMBER DEVELOPMENT FOR OPTIONS.
- MATERIAL/FINISH:
 BACKSHELL - AL. ALLOY/SEE TABLE II
 HARDWARE - CRES/PASSIVATED

REVISIONS			
SYM.	DESCRIPTION	DATE	APPROVED
A	RELEASED	10/18/00	T.L
B	REVISED PER DCN 17705	04/03/01	T.L
C	REVISED PER DCN 25431	03/14/06	T.L



UNLESS OTHERWISE SPECIFIED DIMENSIONS ARE IN INCHES TOLERANCES: FRACTIONS ± 1/16 DECIMALS .XX ± .03 .XXX ± .015 ANGLES ± 2°	DRAWN T. LE 08/19/96	GLENNAIR, INC. CAD 1996 [©] 1211 AIR WAY - GLENDALE - CALIFORNIA 91201			
	CHECK P. DAKES 08/19/96				
	ENGR R. PAINTER 08/19/96	BACKSHELL, RFI/EMI, SPECIAL PURPOSE FOR MIL-DTL-24308 CONNECTORS			
	APPROVED [Signature]				
DD NOT SCALE THIS DRAWING	RELEASE DATE 08/20/96	CODE IDENT. NO. 06324	SIZE C	557T154	REV. C
B/F 96-3132 P/C 55	NON REPARABLE COMMERCIAL ITEM	SCALE N/A	WEIGHT N/A	SHEET 1 OF 1	