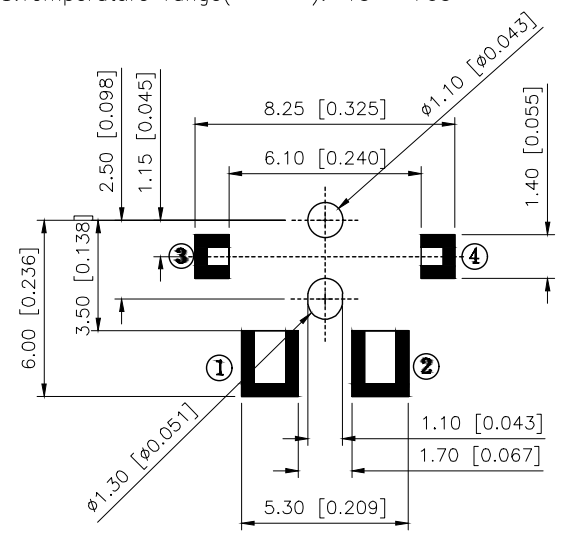
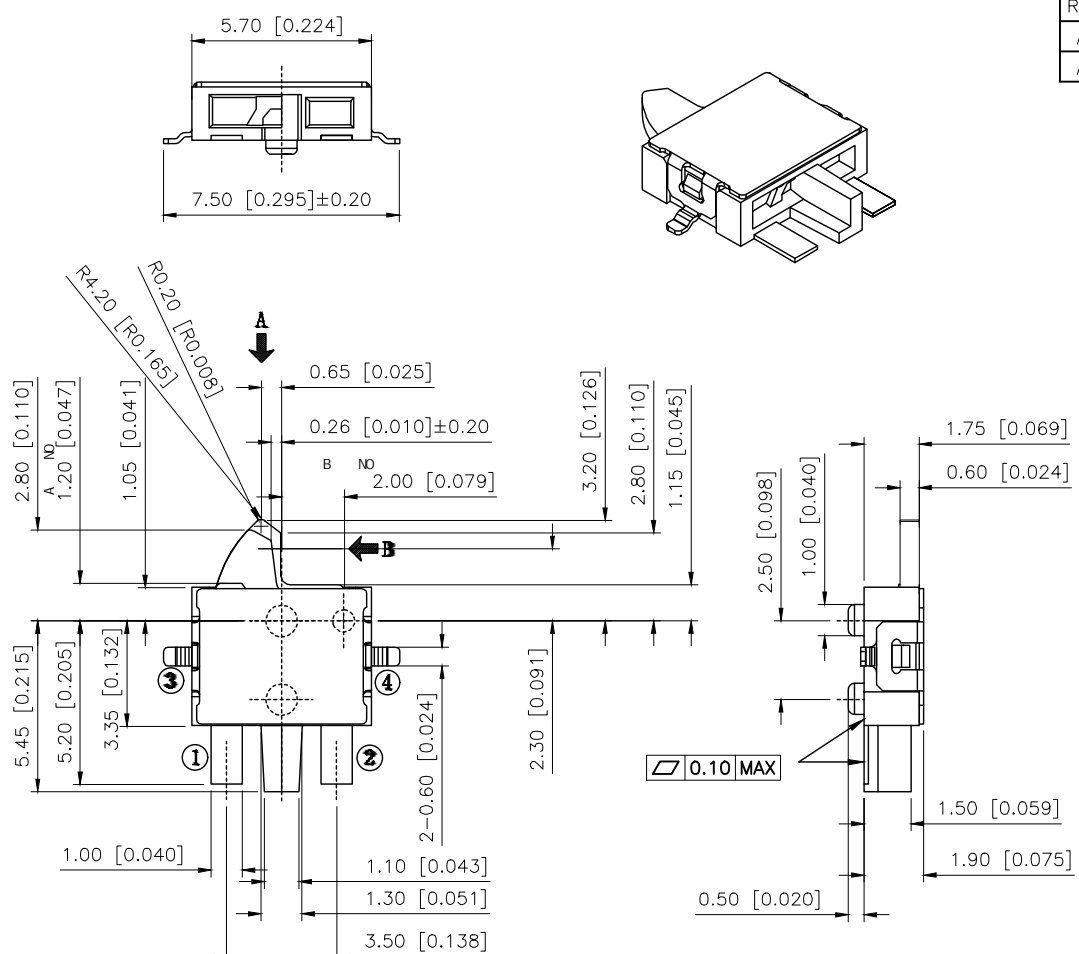
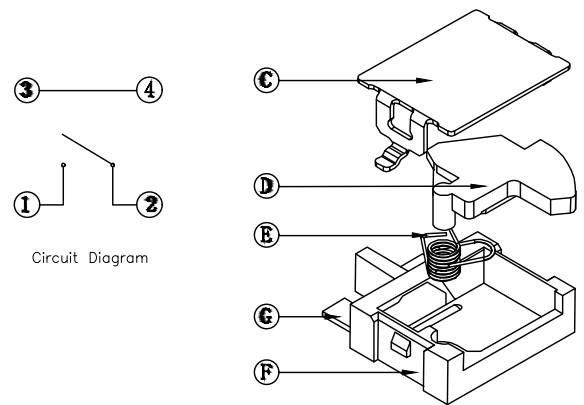


REVISIONS					
REV.	ECN NO.	LOCATION	DESCRIPTION	DATE	DESIGN
A1	N/A			2025.06.25	
A2	ECN-P-2026012802			2026.01.28	

- Specifications()
- 1.Voltage rating():DC 12V
 - 2.Current rating():0.1A AC/DC
 - 3.Withstanding voltage(): 100V AC/minute
 - 4.Contact Travel():0.4±0.20mm
 - 5.Contact resistance():≤1Ω
 - 6.Mating cycles 5000 cycles Min
 - 7.Operating force ≤0.30N 31gf
 - 8.Temperature range(): -10 ~+60



Recommended Layout



ITEM	PAPT NAMF	QTY	MATERIAL	FINISHING
G	Terminal	2	Brass	Plating silver
F	Base	1	PA	Black
E	Shrapnel	1	Phosphor Bronze	Plating silver
D	Handle	1	PA	Black
C	Cover	1	Sus	

AuGLAR	±5°
X.	±0.40
X.x	±0.30
X.xx	±0.20
X.xxx	±0.15
UNSPECIFIED TOLERAUCES	



DESIGN	VIEW:	MODEL TYPE: DETECT SWITCH
CHECKED	UNIT: mm/in	PART NO.: TM-1617SA
APPROVED	SIZE: A4	DWG NO.: