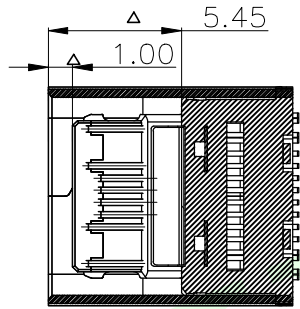
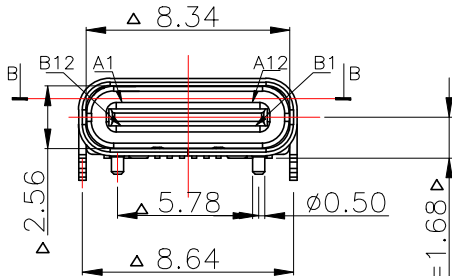
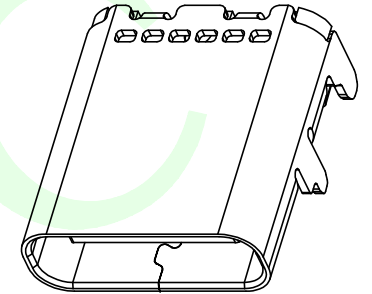
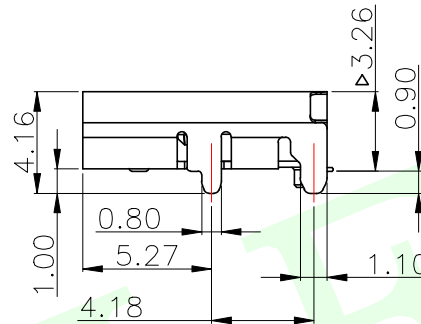
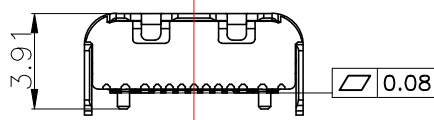
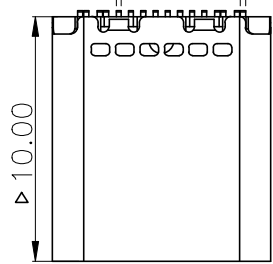


RoHS Compliant

8-0.20  $\Delta$   $\Delta$  8-0.22



截面B-B

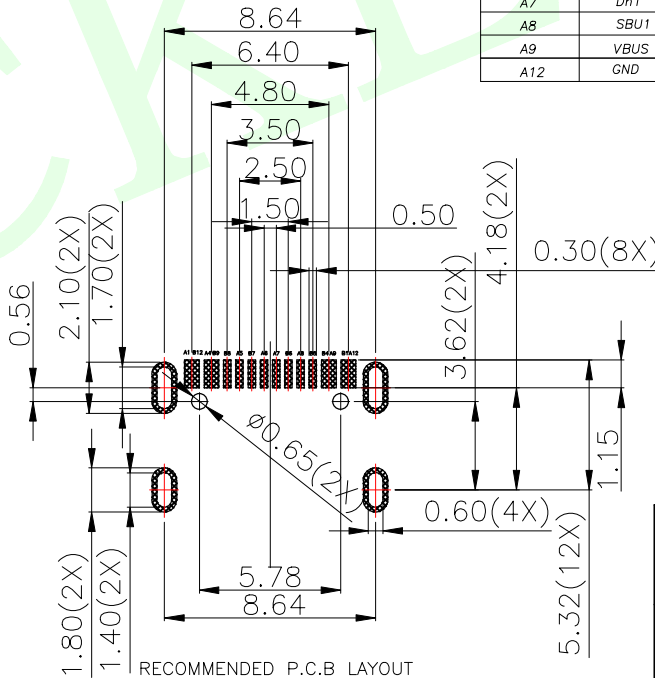
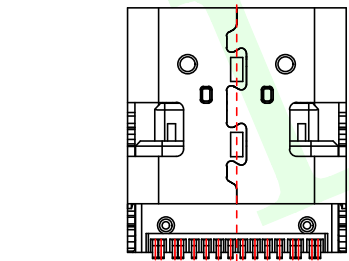
USB TYPE-C PIN ASSIGNMENTS

PIN NUMBER	SIGNAL NAME	PIN NUMBER	SIGNAL NAME
A1	GND	B12	GND
A4	VBUS	B9	VBUS
A5	CC1	B8	SBU2
A6	Dp1	B7	Dn2
A7	Dn1	B6	Dp2
A8	SBU1	B5	CC2
A9	VBUS	B4	VBUS
A12	GND	B1	GND

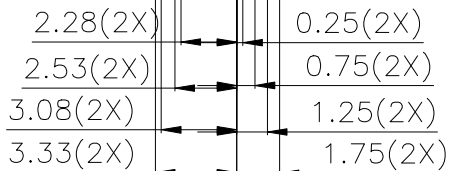
NOTE:

- MATERIAL:
    - INSULATOR: HIGH TEMPERATURE PLASTIC UL 94V-0;
    - CONTACT: COPPER ALLOY
    - SHELL: STAINLESS STEEL
  - ELECTRICAL CHARACTERISTICS:
    - CONTACT RESISTANCE: 40m $\Omega$  Max FOR INITIAL. 30m $\Omega$  CHANGE AFTER TEST. MEASURE AT 20mV, 100mA.
    - CONTACT CURRENT RATING: 5A FOR VBUS PIN; 1.25A FOR VCONN PIN.
    - DIELECTRIC WITHSTANDING VOLTAGE: 100V AC R.M.S.
    - INSULATION RESISTANCE 100M $\Omega$  Min
    - OPERATING TEMPERATURE: -40°C ~ 85°C
  - MECHANICAL CHARACTERISTICS:
    - MATING FORCE: 5~20 N.
    - UNMATED FORCE: 8~20N AFTER TEST
    - DURABILITY: 10,000 CYCLES
  - PLATING
    - TERMINAL CONTACT: (SEE TAB) GOLD PLATING ALL OVER 50u" Min NICKEL AND 80u" Min Tin ALL OVER 50u" Min NICKEL ON SOLDER AREA
    - SHELL: 50u" Min. NICKEL ALL OVER,
5. " $\Delta$ " Focus on size control

CH=1.68  $\Delta$



RECOMMENDED P.C.B LAYOUT



MEASURE POINT:
QUADRANT POINT
TANGENCY POINT
INTERSECTION POINT
UNLESS OTHERWISE SPECIFIED, TOLERANCE:
X. $\pm 0.25$
X.x $\pm 0.20$
X.xx $\pm 0.15$
ANGULAR $\pm 3^\circ$

联晟欣连接器 (深圳) 有限公司  
Lianshengxin Connector (Shenzhen) Co., Ltd

DESIGN	Andy	DATE	2014.12.24	TITLE:
CHECKED		DATE		TYPE C板上单排16PIN加长款9.5&12.4mm
APPROVED		DATE		无弹片
PART NO:	LCK-TCF809-LXXXYL-G1	REV:	04	SCALE: 1:1
DRAWING NO:	102022121	SIZE:	A4	UNIT: mm
		SHEET:	1/1	