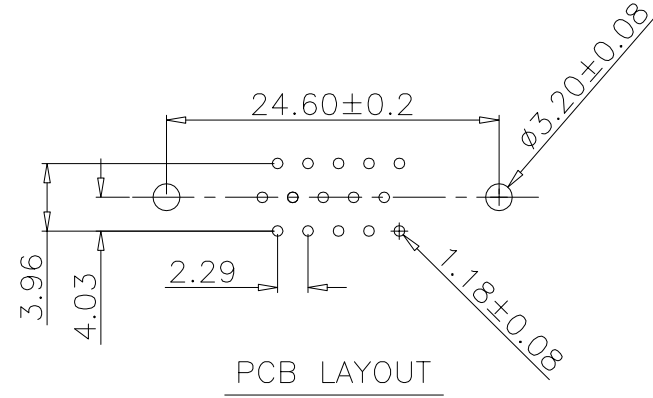
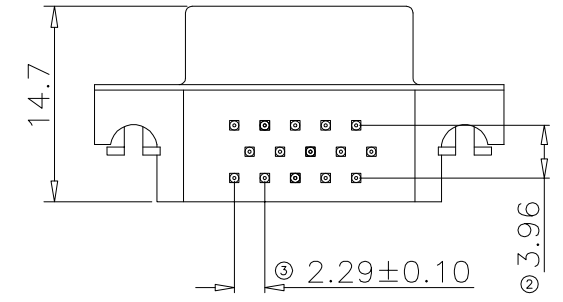
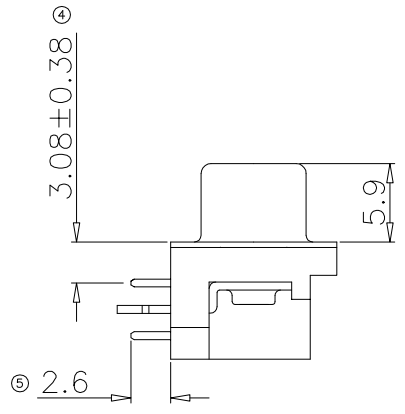
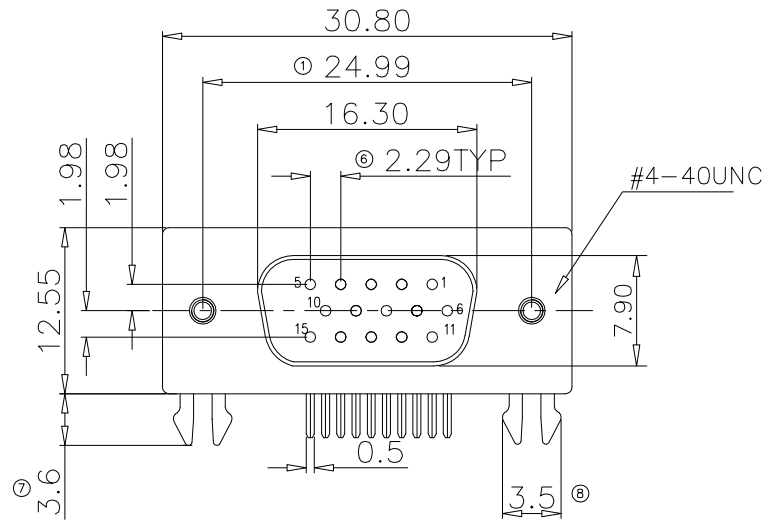


修改		修改摘要		签名		日期	
REV	MARK	REVISION	DESCRIPTION	SIGNATURE		DATE	
AO		NEW	DRG			2016-03-12	



1. Electrical Specification:

- 1.1 Current Rating: 1.5A AC/DC
- 1.2 Voltage Rating: 40V AC/DC
- 1.3 Contact Resistance: 30m ohm max
- 1.4 Insulation Resistance: 1000M ohm min
- 1.5 Dielectric Withstanding Voltage: 500V DC

2. Material and Finish:

- 2.3 Contact: Phosphor Bronze
- 2.4 Shell: SPCC
- 2.5 Contact Plating: Tin Plating Over All

3. Environmental

Operating Temperature: -20°C - +80°C

		<b>深圳市华德共创科技有限公司</b> Shenzhen Huade co-create Technology Co., LTD 电话: 0755-27111216 传真: 0755-29940187						
-TOLERANCES- UNLESS OTHERWISE SPECIFIED 公差参数表				 		TITLE: HDR母座15P插板式3.08 产品名称: 浅蓝色不带螺丝		
X.X	±0.30	X.X*	±3°	APPD: 核准:	PART NO: 产品编号: HDR-HX-102DIP			
X.XX	±0.20	X.XX*	±2°	CHECK: 校对: 王建业	DATE	SCALE	UNIT	CODE NUMBER
X.XXX	±0.10	X.XXX*	±1°	DRAW: 绘图: 黄艳兰	2016-03-12	1:1	mm	A001