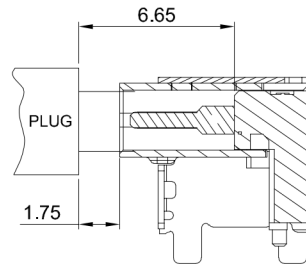
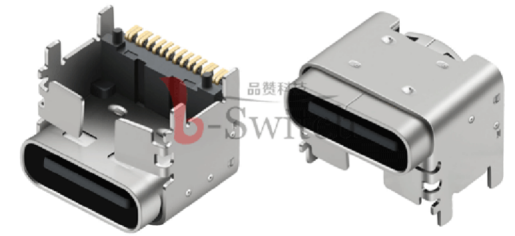


SECTION A-A



AFTER INSERT PLUG

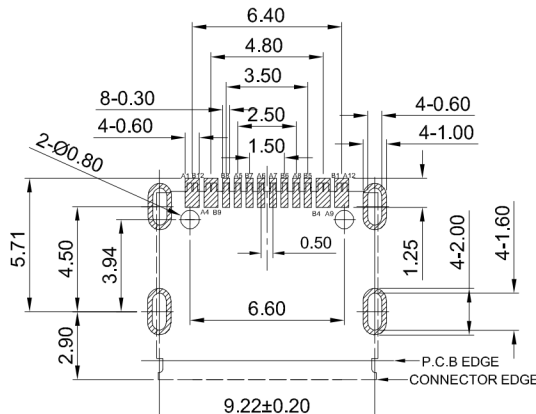
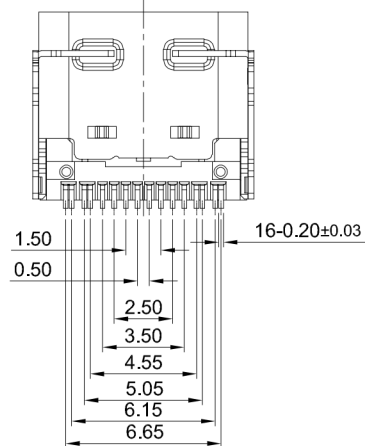
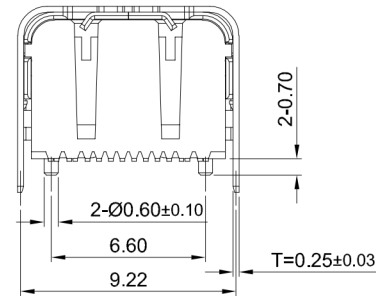
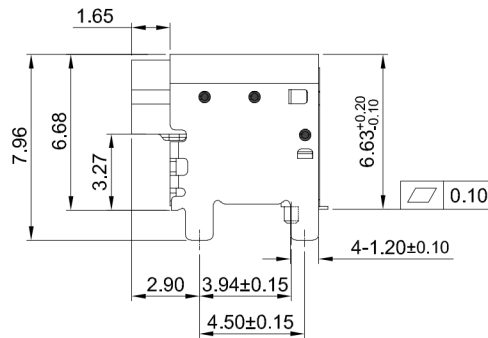
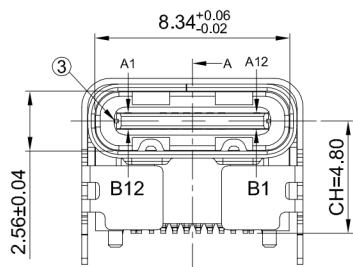


G-Switch USB-C Specification:

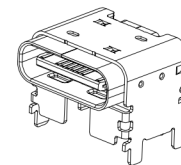
1. Current rated: 5A on vbus/1.25A on vconn/0.25A on other
2. Voltage rating: 24V AC
3. Withstanding voltage: 100V AC/minute
4. Contact resistance: 40mΩ Max
5. Insulation resistance: 100MΩ Min
6. Operating temperature: -40°C ~ +85°C
7. Mating force: 5N~20N
8. Unmating force: 8N~20N
9. Durability cycle: 10,000 cycles
9. Compliant with: IEC62680-1-3

A1	A2	A3	A4	A5	A6	A7	A8	A9	A10	A11	A12
GND			VBUS	CC1	D+	D-	SBU1	VBUS			GND
First			First	Second	Second	Second	Second	First			First

B12	B11	B10	B9	B8	B7	B6	B5	B4	B3	B2	B1
GND			VBUS	SBU2	D-	D+	CC2	VBUS			GND
First			First	Second	Second	Second	Second	First			First



RECOMMENDED PCB LAYOUT
TOLERANCE:±0.05



USB IF
TID:12233

5	OUTER SHELL	STAINLESS STEEL(SUS304)	Ni40u" MIN PLATED
4	INNER SHELL	STAINLESS STEEL(SUS304)	Ni40u" MIN PLATED
3	MID PLATE	STAINLESS STEEL(SUS301)	CLEAN
2	TERMINALS	COPPER ALLOY C7025	Au1u" MIN PLATING ON CONTACT AREA
1	HOUSING	HIGH TEMPERATURE PLASTIC	PA9T BLACK UL 94 V-0
NO.	PARTS	MATERIAL	REMARKS



SCALE: 1:1 UNIT: mm
SIZE: A4

Unless otherwise
General Tolerance:
X.x ±0.30
X.xx ±0.20
X.xxx ±0.10
X.x° ±3°
X.xx° ±2°

Title: Horizontal Type-c 16P Female
SMT Pad up3.27 CH=4.8 L=8.0mm

Molde Code: GT-USB-9016F01

DRAWN	CHECKED	APPROVED	DATE
Xia	Chen	Chen	2023.02.01



REV: A0 SHEET: 1/1