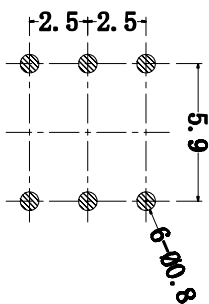
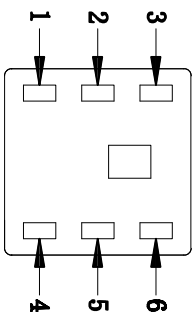


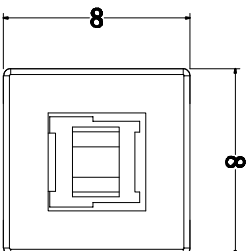
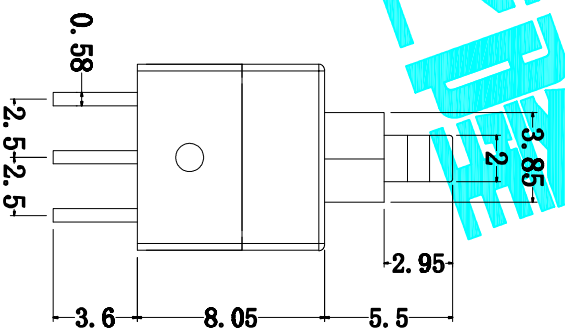
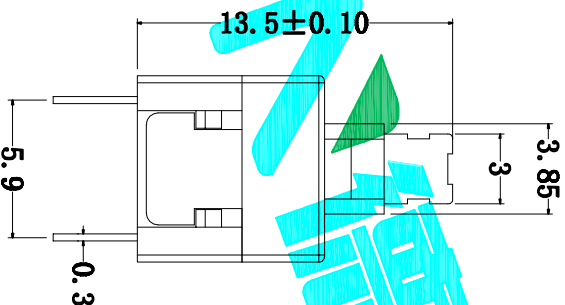
电路简示图

NO.	Operating Type	Part No.
1	Push To Lock	PB-22E86L
2	Push No Lock	PB-22E86N

NOTE:  
 1. Operating Force: 300gf±50gf  
 2. Travel : 2.4±0.2mm



PCB参考图



ITEM	PART NAME	QTY.	MATERIAL	FINISHING
⑧	Terminal	6	Brass strip	Plating silver
⑦	Contact	2	Phosphor bronze	Plating silver
⑥	Securing glue	2	POM	Black
⑤	Spring	1	SUS	Natural
④	Base	1	POM	Black
③	Crochet Needle	1	SUS	Natural
②	Cover	1	POM	White
①	Knob	1	POM	Blue

APPROVALS		DATE		DRAWING NO.	
DRAWN	G.M.Chen	2015/5/4		PART NO.	PB-22E80X
CHECKED				TITLE:	PUSH SWITCH
APPROVALS				EPC ELECTRONICS CO.,LTD	
CHANGE.		CHECK.		NEW	
ECN NO.	REV. A	DATE.		DESCRIPTION.	

TOLERANCES ARE		ANGLE		SCALE:	
30°±0.1°	±0.30	±2°		1:1	SHEET 1 OF 1
10°~30°	±0.20				PROJ.
9°~10°	±0.15				
~5°	±0.10				