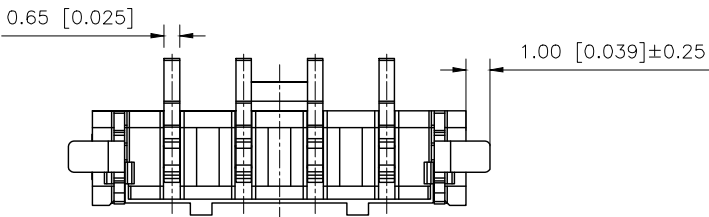
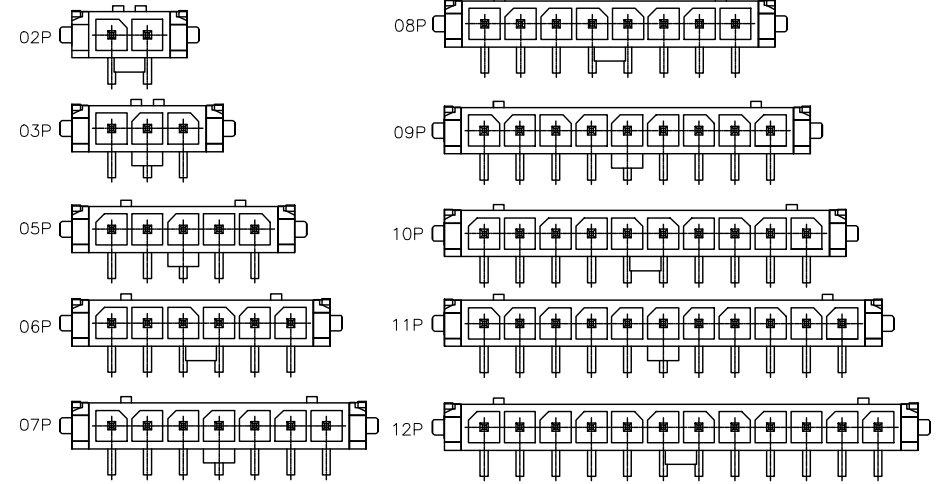
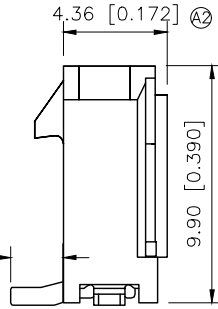
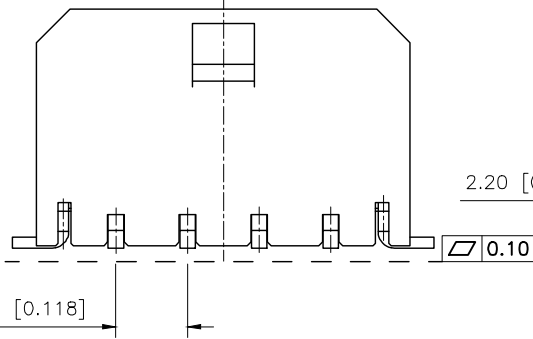
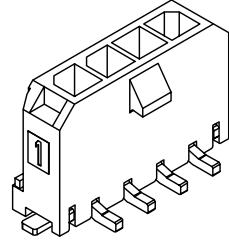
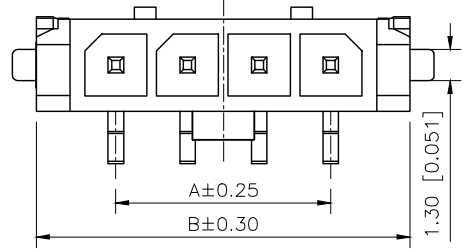


REVISIONS					
REV.	ECN NO.	LOCATION	DESCRIPTION	DATE	DESIGN
A1	N/A			2024.07.17	
A2	N/A	②X1		2025.12.30	

SCALE:2/1



SPECIFICATIONS

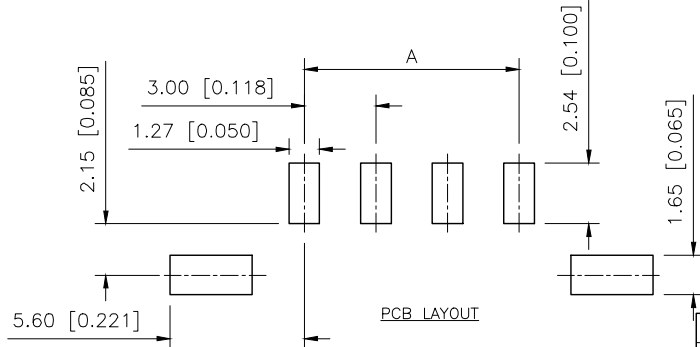
- Voltage rating:250V AC/DC
- Current rating:5A AC/DC
- Withstanding Voltage:1000V AC/minute
- Temperature range:-40°C+105°C
- Insulation resistance: 100MΩ
- Contact resistance:≤10mΩ
- After environmental testing ≤20mΩ

PART NO.:

X3025 W V S-XX D-LP SW XX

Series No
 Category:W-Wafer
 Welding Board Angle:V-Stright 180°
 Welding Way: S-SMT
 Row No.Pin No:XX-02~12Pin
 Special NO:D-Solder Tabs
 Material:LP-LCP UL94V-0
 Planting Category: SW-Fog Tin plating
 Color:Blank-Natural Color

Poles	Dimensions (mm)		
	A	B	C
02	9.70	3.00	12.50
03	12.70	6.00	15.50
04	15.70	9.00	18.50
05	18.70	12.00	21.50
06	21.70	15.00	24.50
07	24.70	18.00	27.50
08	27.70	21.00	30.50
09	30.70	24.00	33.50
10	33.70	27.00	36.50
11	36.70	30.00	39.50
12	39.70	33.00	42.50



X3025WVS-XXD-LPSW	LCP UL 94V-0	Brass	Tin Plating Fog	Brass	Tin-Plated	X3025H
PART NO	Material	Material(Pin)	Finish(Pin)	Material (Solder Tabs)	Finish (Solder Tabs)	Mates With XKB Housing

AuGLAR	±5°
X.	±0.40
X.x	±0.30
X.xx	±0.20
X.xxx	±0.15
UNSPECIFIED TOLERANCES	



DESIGN	VIEW:
CHECKED	UNIT: mm/in
APPROVED	SIZE: A4

MODEL TYPE: 3.00mm Crimp Style Connectors
PART NO.: X3025WVS-XXD-LPSW
DWG NO.:

XKB INDUSTRIAL PRECISION CO.,LIMITED

SCALE	PAGE	REVISION
N/A	1/1	A2