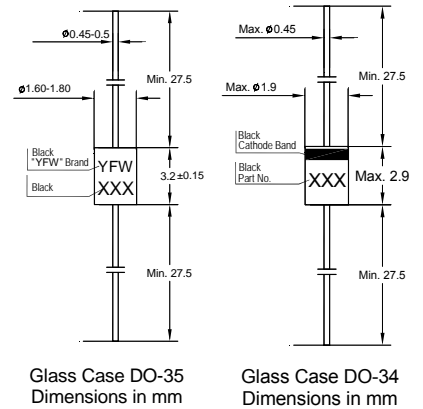


**Silicon Epitaxial Planar Switching Diode**

**Applications**

◆High-speed switching

This diode is also available in MiniMELF case with the type designation LL4148



**Absolute Maximum Ratings (Ta = 25 °C)**

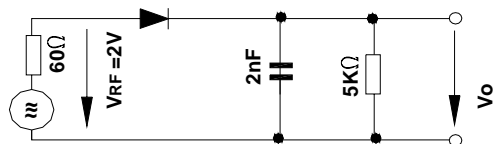
Parameter	Symbol	Value	Unit
Peak Reverse Voltage	$V_{RM}$	100	V
Reverse Voltage	$V_R$	75	V
Average Rectified Forward Current	$I_{F(AV)}$	200	mA
Non-repetitive Peak Forward Surge Current	$I_{FSM}$	0.5 1 4	A
Power Dissipation	$P_{tot}$	500 <sup>1)</sup>	mW
Junction Temperature	$T_j$	175	°C
Storage Temperature Range	$T_{stg}$	- 65 to + 200	°C

<sup>1)</sup> Valid provided that leads at a distance of 8 mm from case are kept at ambient temperature.

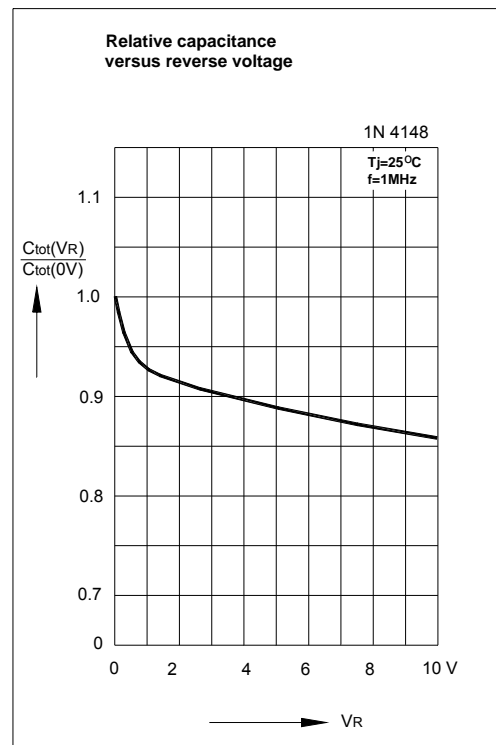
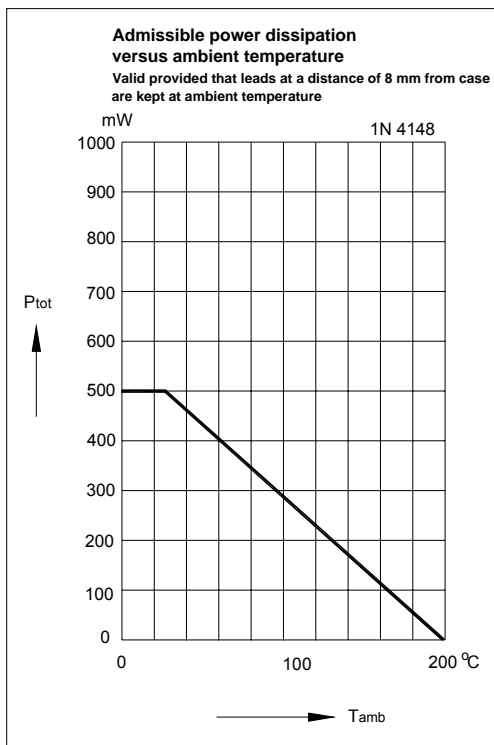
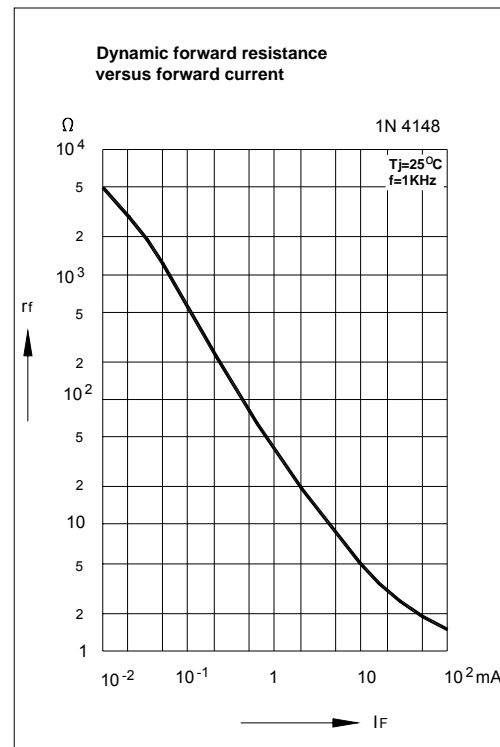
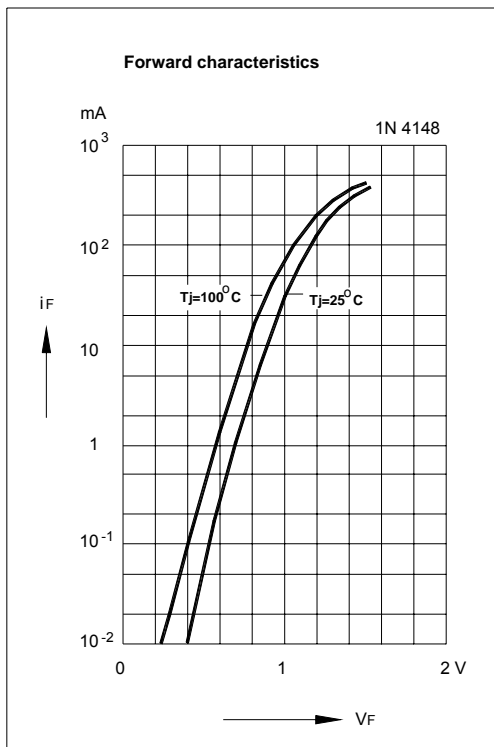
**Characteristics at Ta = 25 °C**

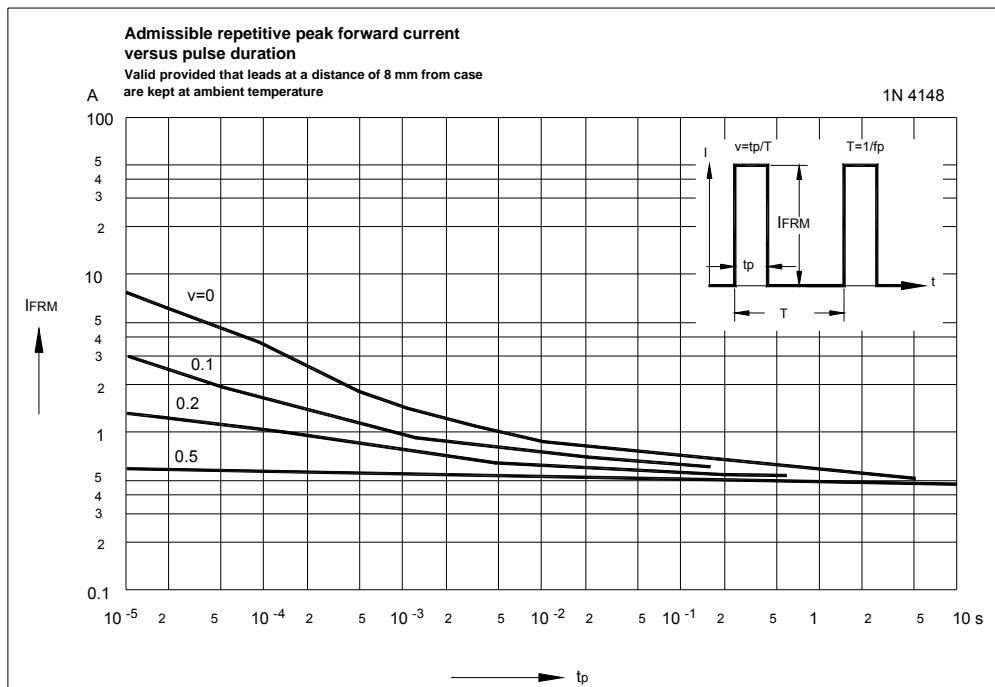
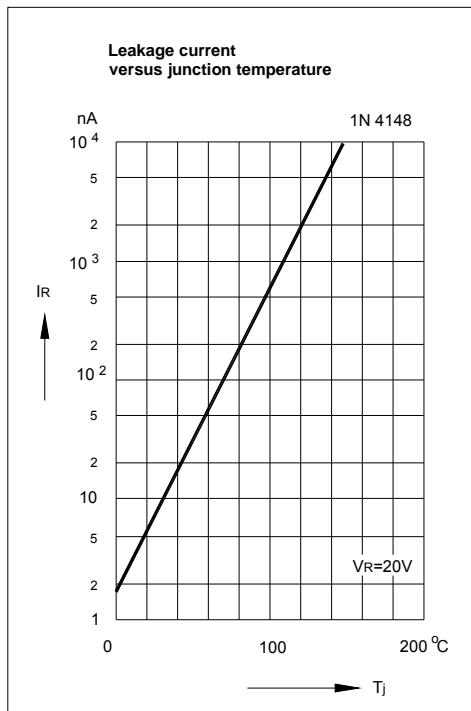
Parameter	Symbol	Min.	Max.	Unit
Forward Voltage at $I_F = 10 \text{ mA}$	$V_F$	-	1	V
Leakage Current at $V_R = 20 \text{ V}$ at $V_R = 75 \text{ V}$ at $V_R = 20 \text{ V}, T_j = 150 \text{ °C}$	$I_R$ $I_R$ $I_R$	- - -	25 5 50	nA $\mu\text{A}$ $\mu\text{A}$
Reverse Breakdown Voltage at $I_R = 100 \mu\text{A}$ at $I_R = 5 \mu\text{A}$	$V_{(BR)R}$ $V_{(BR)R}$	100 75	- -	V V
Capacitance at $V_R = 0, f = 1 \text{ MHz}$	$C_{\text{tot}}$	-	4	pF
Voltage Rise when Switching ON tested with 50 mA Forward Pulses $t_p = 0.1 \text{ s}$ , Rise Time < 30 ns, $f_p = 5 \text{ to } 100 \text{ KHz}$	$V_{\text{fr}}$	-	2.5	V
Reverse Recovery Time at $I_F = 10 \text{ mA}$ to $I_R = 1 \text{ mA}$ , $V_R = 6 \text{ V}$ , $R_L = 100 \Omega$	$t_{\text{rr}}$	-	4	ns
Thermal Resistance Junction to Ambient Air	$R_{\text{thA}}$	-	0.35 <sup>1)</sup>	K/mW
Rectification Efficiency at $f = 100 \text{ MHz}$ , $V_{\text{RF}} = 2 \text{ V}$	$\eta_V$	0.45	-	-

<sup>1)</sup> Valid provided that leads at a distance of 8 mm from case are kept at ambient temperature.



**Rectification Efficiency Measurement Circuit**





## Disclaimer

The information presented in this document is for reference only. GuangDong Youfeng Microelectronics Co.,Ltd. reserves the right to make changes without notice for the specification of the products displayed herein to improve reliability, function or design or otherwise. The product listed herein is designed to be used with ordinary electronic equipment or devices, and not designed to be used with equipment or devices which require high level of reliability and the malfunction of with would directly endanger human life (such as medical instruments, transportation equipment, aerospace machinery, nuclear-reactor controllers, fuel controllers and other safety devices),YFW or anyone on its behalf, assumes no responsibility or liability for any damages resulting from such improper use of sale. This publication supersedes & replaces all information previously supplied. For additional information, please visit our website <https://www.yfwdiode.com>, or consult YFW sales office for further assistance.