

PCB REFERENCE DIAGRAM
TOLERANCE: ±0.05

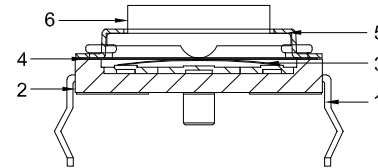
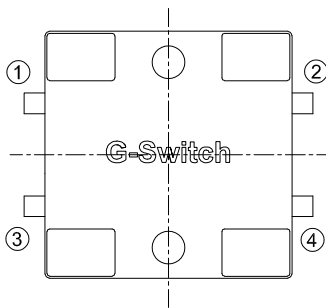
GT-TA113X-HXXX-LX

G-Switch

Operating Force
A=160gf
B=260gf
C=350gf

Switch Height(mm)
H043=4.30
H080=8.00

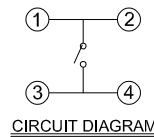
Switch Lifetime
L100=10,000,000 Cycles



G-Switch Specification:

1. Operating temperature range: -40°C ~ +85°C
2. Rating: 50mA, 12V DC
3. Insulation resistance: 100MΩ min, 100V DC
4. Dielectric strength: 250V AC for 1 min
5. Contact resistance: 100mΩ max.
6. Travel: 0.30^{+0.20}_{-0.10} mm

NO.	PART NAME	MATERIAL	REMARK
6	STEM	PPA	RED
5	COVER	SUS304	--
4	TAPE	POLYIMIDE	YELLOW
3	CONTACT	SUS301	Ag PLATING
2	BASE	PPA	BLACK
1	TERMINAL	H65	Ag PLATING



SCALE: 1:1 UNIT: mm
SIZE: A4

Unless otherwise
General Tolerance:
X.x ±0.30
X.xx ±0.20
X.xxx ±0.10
X° ±5°

Title: Vertical Tact Switch
Through Hole Terminals 12.0×12.0×Hmm

Molde Code: GT-TA113X-HXXX-LX

DRAWN	CHECKED	APPROVED	DATE
Jiang	Xia	Chen	2025.1.5



REV: A0 SHEET: 1/1