

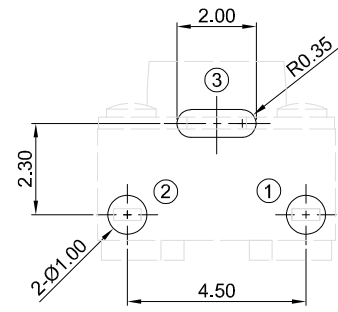
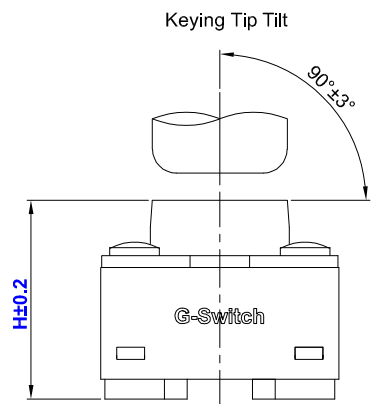
GT-TC112X-HXXX-LX

G-Switch

Operating Force
 A=160gf B=250gf
 C=100gf D=300gf
 E=130gf

Switch Height(mm)
 H043=4.3 H045=4.5
 H050=5.0 H055=5.5
 H060=6.0 H065=6.5
 H070=7.0 H075=7.5
 H080=8.0 H085=8.5
 H090=9.0 H095=9.5

Switch Lifetime
 L05=50,000 Cycles
 L1=100,000 Cycles
 L3=300,000 Cycles

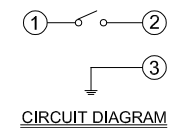


PCB REFERENCE DIAGRAM
 TOLERANCE:±0.05

G-Switch Specification:

1. Operating temperature range: -40°C ~ +85°C
2. Rating: 50mA, 12V DC
3. Insulation resistance: 100MΩ min, 100V DC
4. Dielectric strength: 250V AC for 1 min
5. Contact resistance: 100mΩ max.
6. Travel: 0.25±0.10mm

NO.	PART NAME	MATERIAL	REMARK
5	COVER	IRON	Cu.Sn PLATING
4	PLUNGER	PA6T	BLACK
3	CONTACT	STAINLESS STEEL	Ag PLATED
2	TERMINAL	COPPER ALLOY	Ag PLATED
1	BASE	PA6T	BLACK



SCALE: 1:1	UNIT: mm
SIZE: A4	
Unless otherwise General Tolerance:	
30<L	±0.30
10<L≤30	±0.20
5<L≤10	±0.15
L≤5	±0.10
X*	±2*

Title: Horizontal Tact Switch DIP 6.0×6.0×Hmm			
Molde Code: GT-TC112X-HXXX-LX			
DRAWN	CHECKED	APPROVED	DATE
Jiang	Xia	Chen	2025.04.25



REV: A0	SHEET: 1/1
---------	------------