

CD4511B BCD-to-7 Segment Latch/Decoder/Driver

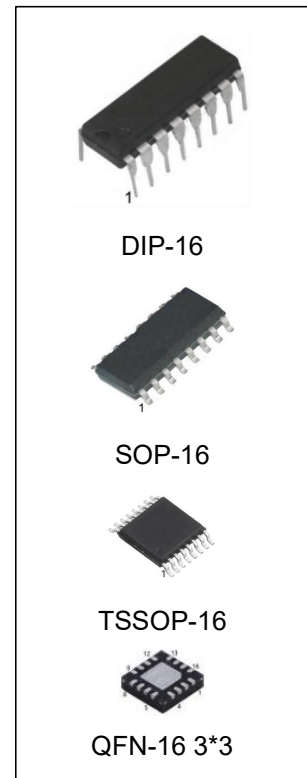
General Description

The CD4511B BCD-to-seven segment latch/ decoder/driver is constructed with complementary MOS (CMOS) enhancement mode devices and NPN bipolar out- put drivers in a single monolithic structure. The circuit pro- vides the functions of a 4-bit storage latch, an 8421 BCD-to-seven segment decoder, and an output drive capability. Lamp test (LT), blanking (BI), and latch enable (LE) inputs are used to test the display, to turn-off or pulse modulate the brightness of the display, and to store a BCD code, respectively. It can be used with seven-segment light emit- ting diodes (LED), incandescent, fluorescent, gas discharge, or liquid crystal readouts either directly or indirectly.

Applications include instrument (e.g., counter, DVM, etc.) display driver, computer/calculator display driver, cockpit display driver, and various clock, watch, and timer uses.

Features

- Low logic circuit power dissipation
- High current sourcing outputs (up to 25 mA)
- Latch storage of code
- Blanking input
- Lamp test provision
- Lamp intensity modulation capability
- Time share (multiplexing) facility
- Equivalent to Motorola MC14511

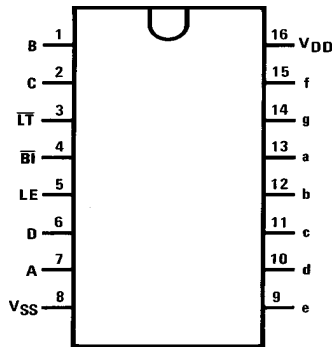


Ordering Information

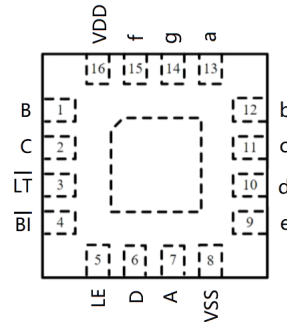
DEVICE	Package Type	MARKING	Packing	Packing Qty
CD4511BE/ CD4511BN	DIP-16	CD4511B	TUBE	1000pcs/box
CD4511BM/TR	SOP-16	CD4511B	REEL	2500pcs/reel
CD4511BMT/TR	TSSOP-16	CD4511B	REEL	2500pcs/reel
CD4511BLQ/TR	QFN-16 3*3	4511B	REEL	5000pcs/reel

Connection Diagram

DIP-16/SOP-16/TSSOP-16



QFN-16 3*3



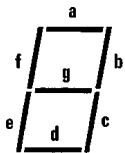
Truth Table

Inputs							Outputs							
LE	BI	LT	D	C	B	A	a	b	c	d	e	f	g	Display
X	X	0	X	X	X	X	1	1	1	1	1	1	1	B
X	0	1	X	X	X	X	0	0	0	0	0	0	0	0
0	1	1	0	0	0	0	1	1	1	1	1	1	0	0
0	1	1	0	0	0	1	0	1	1	0	1	1	0	1
0	1	1	0	0	1	1	1	1	1	1	0	0	1	3
0	1	1	0	1	0	0	0	1	1	0	0	1	1	4
0	1	1	0	1	0	1	1	0	1	1	0	1	1	5
0	1	1	0	1	1	0	0	0	1	1	1	1	1	6
0	1	1	0	1	1	1	1	1	1	0	0	0	0	7
0	1	1	1	0	0	0	1	1	1	1	1	1	1	8
0	1	1	1	0	0	1	1	1	1	0	0	1	1	9
0	1	1	1	1	0	1	0	0	0	0	0	0	0	
0	1	1	1	0	1	1	0	0	0	0	0	0	0	
0	1	1	1	1	0	0	0	0	0	0	0	0	0	
0	1	1	1	1	1	0	0	0	0	0	0	0	0	
0	1	1	1	1	1	1	0	0	0	0	0	0	0	
0	1	1	1	1	1	1	0	0	0	0	0	0	0	
1	1	1	X	X	X	X				*				*

X-Don't Care

*Depends upon the BCD code applied during the 0 to 1 transition of LE.

Segment Identification



Display



Absolute Maximum Ratings

Condition		Min	Max	Units
DC Supply Voltage (V_{DD})		-0.5	18	V
Input Voltage (V_{IN})		-0.5	$V_{DD}+0.5$	V
Storage Temperature Range (T_S)		-65	150	°C
Power Dissipation (P_D)	Dual-In-Line	-	700	mW
	Small Outline	-	500	
Lead Temperature (T_L)	(Soldering, 10 seconds)	-	260	°C

Absolute Maximum Ratings indicate limits beyond which damage to the device may occur. Operating Ratings indicate conditions for which the device is intended to be functional, but specific performance is not ensured.

Recommended Operating Conditions

Condition		Min	Max	Units
DC Supply Voltage (V_{DD})		5	15	V
Input Voltage (V_{IN})		0V to V_{DD}		V
Operating Temperature Range (T_A)		40	85	°C

DC Electrical Characteristics

Symbol	Parameter	Conditions	-40°C		+25°C			+85°C		Units
			Min	Max	Min	Typ	Max	Min	Max	
I _{DD}	Quiescent Supply Current	VDD=5V, VIN=VDD or VSS		5			5		150	mA
		VDD=10V, VIN = VDD or VSS		10			10		300	mA
		VDD=15V, VIN = VDD or VSS		20			20		600	mA
VOL	Output Voltage Logical "0" Level	VDD=5V		0.01		0	0.01		0.05	V
		VDD=10V		0.01		0	0.01		0.05	
		VDD=15V		0.01		0	0.01		0.05	
VOH	Output Voltage Logical "1" Level	VDD=5V	4.1		4.1	4.57		4.1		V
		VDD=10V	9.1		9.1	9.58		9.1		
		VDD=15V	14.1		14.1	14.59		14.1		
VIL	Low Level Input Voltage	VDD=5V, VOUT= 3.8V or 0.5V		1.5		2	1.5		1.5	V
		VDD=10V, VOUT=8.8V or 1.0V		3.0		4	3.0		3.0	
		VDD=15V, VOUT=13.8V or 1.5V		4.0		6	4.0		4.0	
VIH	High Level Input Voltage	VDD=5V, VOUT=0.5V or 3.8V	3.5		3.5	3		3.5		V
		VDD=10V, VOUT=1.0V or 8.8V	7.0		7.0	6		7.0		
		VDD=15V, VOUT=1.5V or 13.8V	11.0		11.0	9		11.0		
VOH	Output (Source) Drive Voltage	VDD=5V, IOH=0 mA				4.57				V
		VDD=5V, IOH=5 mA	4.1		4.1	4.24		4.1		
		VDD=5V, IOH=10 mA	3.9		3.9	4.12		3.5		
		VDD=5V, IOH=15 mA	3.4		3.4	3.94		3.0		
		VDD=5V, IOH=20 mA				3.75				
		VDD=5V, IOH=25 mA				3.54				
		VDD=10V, IOH=0 mA				9.58				V
		VDD=10V, IOH=5 mA	9.1		9.1	9.26		9.1		
		VDD=10V, IOH=10 mA	9.0		9.0	9.17		8.6		
		VDD=10V, IOH=15 mA	8.6		8.6	9.04		8.2		
		VDD=10V, IOH=20 mA				8.9				
		VDD=10V, IOH=25 mA				8.75				
VDD=15V, IOH=0 mA				9.58				V		
VDD=15V, IOH=5 mA	14.1		14.1	14.27		14.1				
VDD=15V, IOH=10 mA	14.0		14.0	14.17		13.6				
VDD=15V, IOH=15 mA	13.6		13.6	14.07		13.2				
VDD=15V, IOH=20 mA				13.95						
VDD=15V, IOH=25 mA				13.8						
IOL	Low Level Output Current	VDD=5V, VOL= 0.4V	0.64		0.51	0.88		0.36		mA
		VDD=10V, VOL= 0.5V	1.6		1.3	2.25		0.9		
		VDD=15V, VOL=1.5V	4.2		3.4	8.8		2.4		
IIN	Input Current	VDD=15V, VIN= 0V		-0.10		-10 ⁻⁵	-0.10		-1.0	μA
		VDD=15V, VIN=5V		0.10		10 ⁻⁵	0.10		1.0	μA

Note1: Devices should not be connected with power on.

DC Electrical Characteristics

Symbol	Parameter	Conditions	-40°C		+25°C			+85°C		Units
			Min	Max	Min	Typ	Max	Min	Max	
I _{DD}	Quiescent Supply Current	V _{DD} —5V		20			20		150	μA
		V _{DD} —10V		40			40		300	
		V _{DD} —15V		80			80		600	
V _{OL}	Output Voltage Logical “0” Level	V _{DD} —5V		0.01		0	0.01		0.05	V
		V _{DD} —10V		0.01		0	0.01		0.05	
		V _{DD} —15V		0.01		0	0.01		0.05	
V _{OH}	Output Voltage Logical “1” Level	V _{DD} —5V	4.1		4.1	4.57		4.1		V
		V _{DD} —10V	9.1		9.1	9.58		9.1		
		V _{DD} —15V	14.1		14.1	14.59		14.1		
V _{IL}	Low Level Input Voltage	V _{DD} —5V, V _{OUT} —3.8V or 0.5V		1.5		2	1.5		1.5	V
		V _{DD} —10V, V _{OUT} —8.8V or 1.0V		3.0		4	3.0		3.0	
		V _{DD} —15V, V _{OUT} —13.8V or 1.5V		4.0		6	4.0		4.0	
V _{IH}	High Level Input Voltage	V _{DD} —5V, V _{OUT} —0.5V or 3.8V	3.5		3.5	3		3.5		V
		V _{DD} —10V, V _{OUT} —1.0V or 8.8V	7.0		7.0	6		7.0		
		V _{DD} —15V, V _{OUT} —1.5V or 13.8V	11.0		11.0	9		11.0		
V _{OH}	Output (Source) Drive Voltage	V _{DD} —5V, I _{OH} —0 mA				4.57				V
		V _{DD} —5V, I _{OH} —5 mA	4.1		4.1	4.24		4.1		
		V _{DD} —5V, I _{OH} —10 mA	3.6		3.6	4.12		3.3		
		V _{DD} —5V, I _{OH} —15 mA	2.8		2.8	3.94		2.5		
		V _{DD} —5V, I _{OH} —20 mA				3.75				
		V _{DD} —5V, I _{OH} —25 mA				3.54				
		V _{DD} —10V, I _{OH} —0 mA				9.58				V
		V _{DD} —10V, I _{OH} —5 mA	9.1		9.1	9.26		9.1		
		V _{DD} —10V, I _{OH} —10 mA	8.75		8.75	9.17		8.45		
		V _{DD} —10V, I _{OH} —15 mA	8.1		8.1	9.04		7.8		
		V _{DD} —10V, I _{OH} —20 mA				8.9				
		V _{DD} —10V, I _{OH} —25 mA				8.75				
V _{DD} —15V, I _{OH} —0 mA				14.59				V		
V _{DD} —15V, I _{OH} —5 mA	14.1		14.1	14.27		14.1				
V _{DD} —15V, I _{OH} —10 mA	13.75		13.75	14.18		13.45				
V _{DD} —15V, I _{OH} —15 mA	13.1		13.1	14.07		12.8				
V _{DD} —15V, I _{OH} —20 mA				13.95						
V _{DD} —15V, I _{OH} —25 mA				13.8						
I _{OL}	Low Level Output Current	V _{DD} —5V, V _{OL} —0.4V	0.52		0.44	0.88		0.36		mA
		V _{DD} —10V, V _{OL} —0.5V	1.3		1.1	2.25		0.9		
		V _{DD} —15V, V _{OL} —1.5V	3.6		3.0	8.8		2.4		
I _{IN}	Input Current	V _{DD} —15V, V _{IN} —0V		-0.30		-10-5	-0.30		-10	μA
		V _{DD} —15V, V _{IN} —15V		0.30		10-5	0.30		1.0	

AC Electrical Characteristics*
 $T_A=25^{\circ}\text{C}$ and $C_L=50\text{ pF}$, typical temperature coefficient for all values of $V_{DD} - 0.3\%/^{\circ}\text{C}$

Symbol	Parameter	Conditions	CD4511B			Units
			Min	Typ	Max	
C_{IN}	Input Capacitance	$V_{IN}=0$		5.0	7.5	pF
t_r	Output Rise Time (Figure 1a)	VDD-5V		40	80	ns
		VDD-10V		30	60	
		VDD-15V		25	50	
t_f	Output Fall Time (Figure 1a)	VDD-5V		125	250	ns
		VDD-10V		75	150	
		VDD-15V		65	130	
t_{PLH}	Turn-Off Delay Time (Data) (Figure 1a)	VDD-5V		640	1280	ns
		VDD-10V		250	500	
		VDD-15V		175	350	
t_{PHL}	Turn-On Delay Time (Data) (Figure 1a)	VDD-5V		720	1440	ns
		VDD-10V		290	580	
		VDD-15V		195	400	
t_{PLH}	Turn-Off Delay Time (Blank) (Figure 1a)	VDD-5V		320	640	ns
		VDD-10V		130	260	
		VDD-15V		100	200	
t_{PHL}	Turn-On Delay Time (Blank) (Figure 1a)	VDD-5V		485	970	ns
		VDD-10V		200	400	
		VDD-15V		160	320	
t_{PLH}	Turn-Off Delay Time (Lamp Test) (Figure 1a)	VDD-5V		313	625	ns
		VDD-10V		125	250	
		VDD-15V		90	180	
t_{PHL}	Turn-On Delay Time (Lamp Test) (Figure 1a)	VDD-5V		313	625	ns
		VDD-10V		125	250	
		VDD-15V		90	180	
t_{SETUP}	Setup Time (Figure 1b)	VDD-5V	180	90		ns
		VDD-10V	76	38		
		VDD-15V	40	20		
t_{HOLD}	Hold Time (Figure 1b)	VDD-5V	0	-90		ns
		VDD-10V	0	-38		
		VDD-15V	0	-20		
PWLE	Minimum Latch Enable Pulse Width (Figure 1c)	VDD-5V	520	260		ns
		VDD-10V	220	110		
		VDD-15V	130	65		

*AC Parameters are guaranteed by DC correlated testing.

Switching Time Waveforms

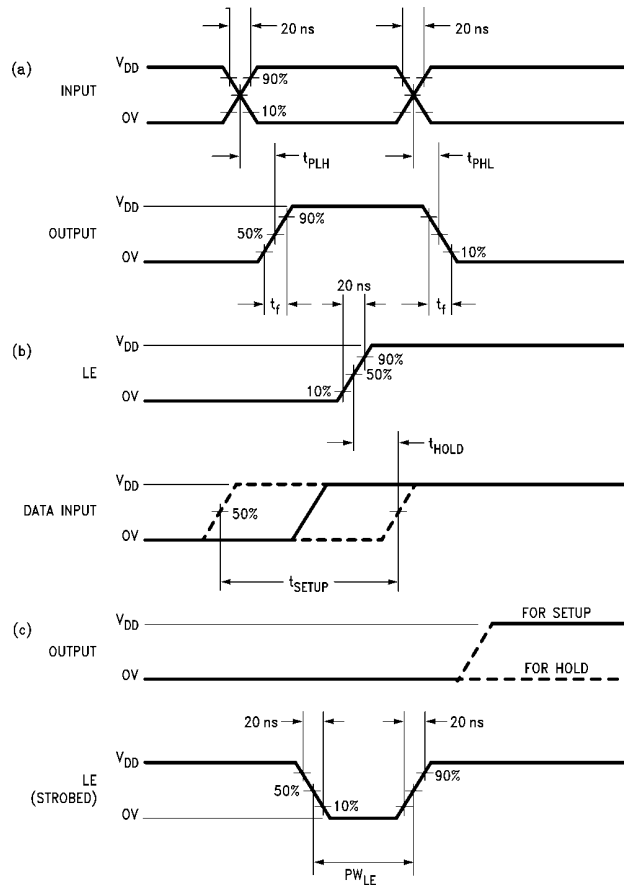
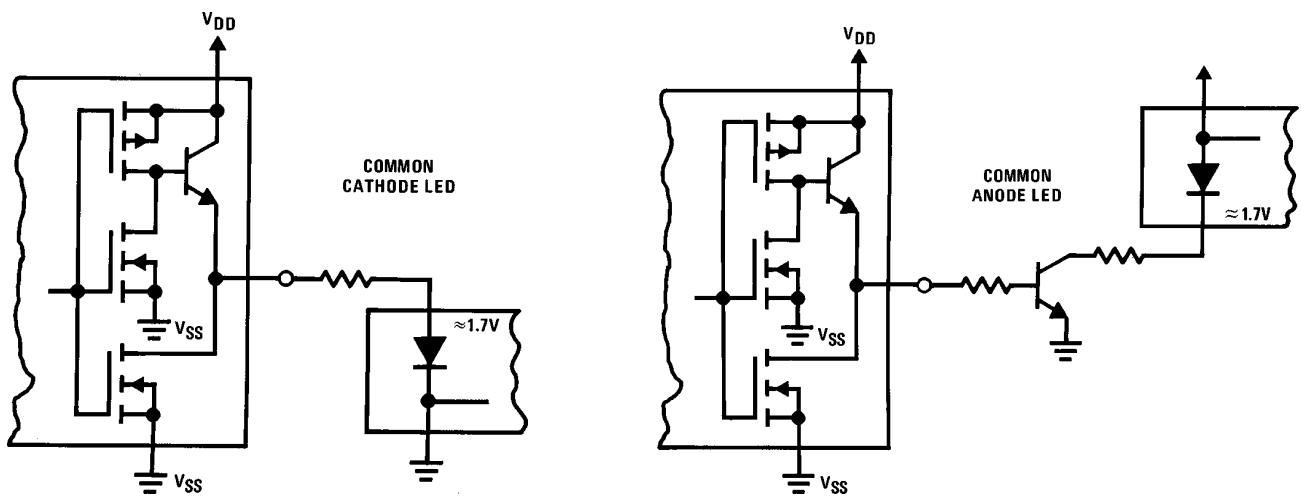


FIGURE 1

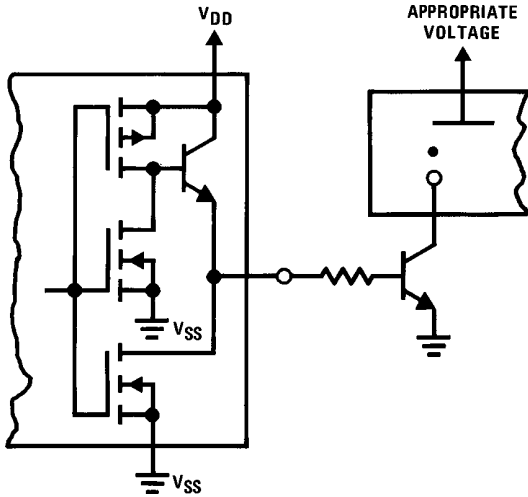
Typical Applications

Light Emitting Diode (LED) Readout

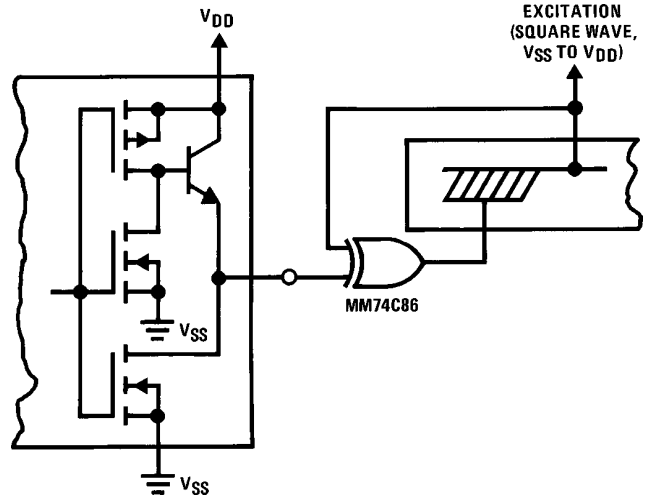


Typical Applications (Continued)

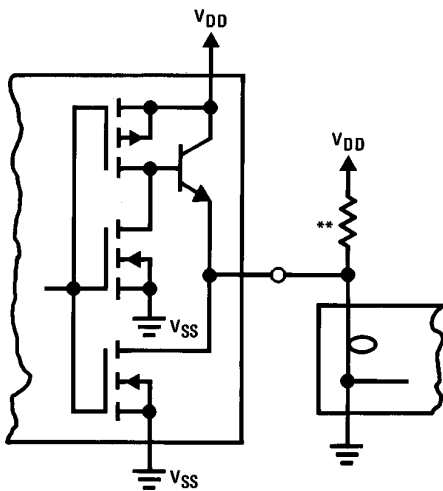
Gas Discharge Readout



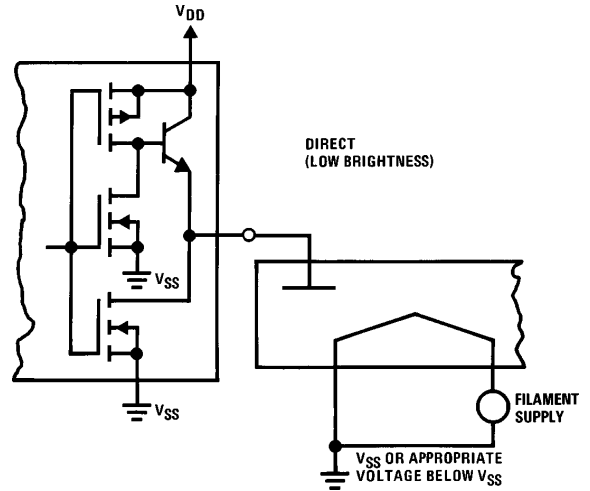
Liquid Crystal (LC) Readout



Incandescent Readout



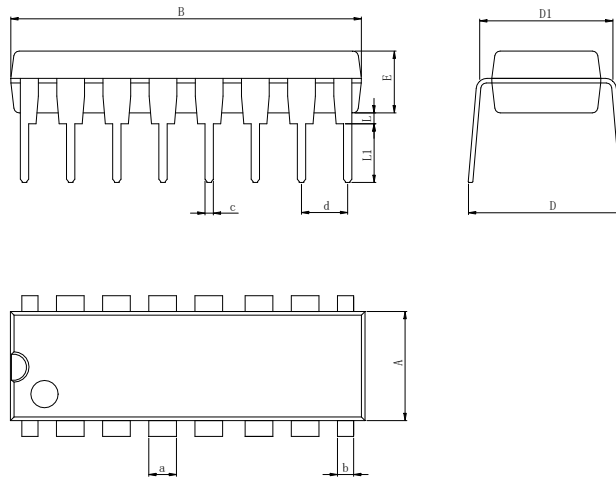
Fluorescent Readout



**A filament pre-warm resistor is recommended to reduce filament thermal shock and increase the effective cold resistance of the filament.

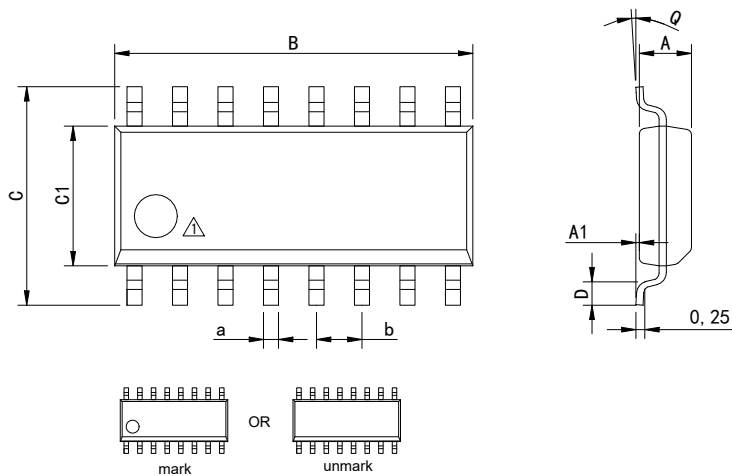
Physical Dimensions

DIP-16



Dimensions In Millimeters(DIP-16)											
Symbol:	A	B	D	D1	E	L	L1	a	b	c	d
Min:	6.10	18.94	8.10	7.42	3.10	0.50	3.00	1.50	0.85	0.40	2.54 BSC
Max:	6.68	19.56	10.9	7.82	3.55	0.70	3.60	1.55	0.90	0.50	

SOP-16

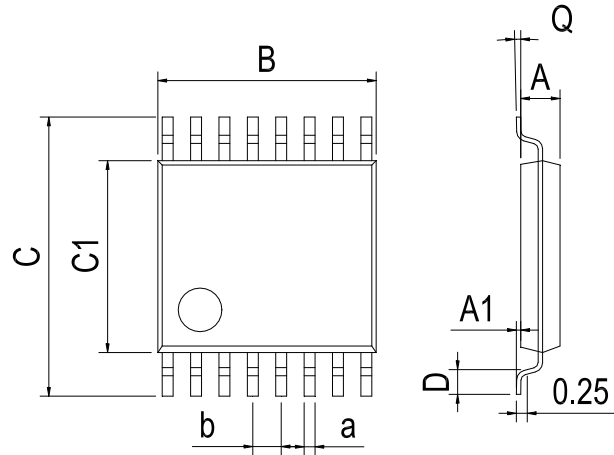


△ Package top mark may be in lower left corner or unmark

Dimensions In Millimeters(SOP-16)									
Symbol:	A	A1	B	C	C1	D	Q	a	b
Min:	1.35	0.05	9.80	5.80	3.80	0.40	0°	0.35	1.27 BSC
Max:	1.55	0.20	10.0	6.20	4.00	0.80	8°	0.45	

Physical Dimensions

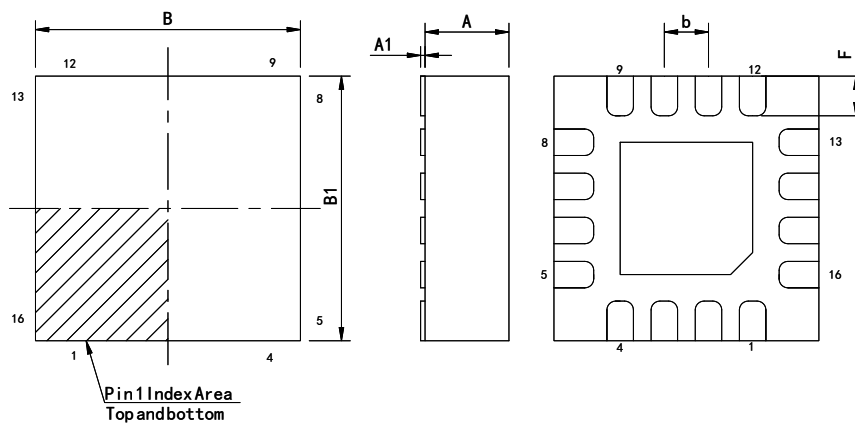
TSSOP-16



Dimensions In Millimeters(TSSOP-16)

Symbol:	A	A1	B	C	C1	D	Q	a	b
Min:	0.85	0.05	4.90	6.20	4.30	0.40	0°	0.20	0.65 BSC
Max:	0.95	0.20	5.10	6.60	4.50	0.80	8°	0.25	

QFN-16 3*3



Dimensions In Millimeters(QFN-16 3*3)

Symbol:	A	A1	B	B1	E	F	a	b
Min:	0.85	0	2.90	2.90	0.15	0.25	0.18	0.50TYP
Max:	0.95	0.05	3.10	3.10	0.25	0.45	0.30	

Revision History

REVISION NUMBER	DATE	REVISION	PAGE
V1.0	2018-8	New	1-12
V1.1	2020-12	Updated DIP-16 dimension、 Update DIP Package New Model	9
V1.2	2024-11	Add the QFN-16 package device、 Update Lead Temperature	1、 3
V1.3	2025-11	Update important statements、 Update SOP-16 Dimension drawing	9、 12

IMPORTANT STATEMENT:

Huaguan Semiconductor reserves the right to change products and services offered without prior notice. Customers should obtain the latest relevant information before placing orders and verify that such information is current and complete. Huaguan Semiconductor assumes no responsibility or liability for altered documents.

Customers are responsible for complying with safety standards and implementing safety measures when using Huaguan Semiconductor products in system design and end-product manufacturing. You assume full responsibility for: selecting the appropriate Huaguan Semiconductor products for your application; designing, validating, and testing your application; and ensuring that your application complies with applicable standards and all other safety, security, or other requirements. This is to prevent potential risks that may lead to personal injury or property damage.

Huaguan Semiconductor products are not approved for use in life support, military, aerospace, or other high-risk applications. Huaguan products are neither intended nor warranted for use in such systems or equipment. Any failure or malfunction may lead to personal injury or severe property damage. Such applications are deemed "Unsafe Use." Unsafe Use includes, but is not limited to: surgical and medical equipment, nuclear energy control equipment, aircraft or spacecraft instruments, control or operation of vehicle power, braking, or safety systems, traffic signal instruments, all types of safety devices, and any other applications intended to support or sustain life. Huaguan Semiconductor shall not be liable for consequences resulting from Unsafe Use in these fields. Users must independently evaluate and assume all risks. Any issues, liabilities, or losses arising from the use of products beyond their approved applications shall be solely borne by the user. Users may not claim any compensation from Huaguan Semiconductor based on these terms. If any third party claims against Huaguan Semiconductor due to such Unsafe Use, the user shall compensate Huaguan Semiconductor for all resulting damages and liabilities.

Huaguan Semiconductor provides technical and reliability data (including datasheets), design resources (including reference designs), application or other design advice, web tools, safety information, and other resources for its semiconductor products. However, no guarantee is made that these resources are free from defects, and no express or implied warranties are provided. The use of testing and other quality control techniques is limited to Huaguan Semiconductor's quality assurance scope. Not all parameters of each device are tested.

Huaguan Semiconductor's documentation authorizes you to use these resources only for developing applications related to the products described herein. You are not granted rights to any other intellectual property of Huaguan Semiconductor or any third party. Any other reproduction or display of these resources is strictly prohibited. You shall fully indemnify Huaguan Semiconductor and its agents against any claims, damages, costs, losses, and liabilities arising from your use of these resources. Huaguan Semiconductor shall not be held responsible.