

**Dual channel buffer
door**

SN74LVC2G34

Product Data Sheet

**AOTE DCC
RELEASE**

◆ Summary :

SN74LVC2G34 is a dual channel buffer gate that can operate within a supply voltage range of 1.65V to 5.5V.

The SN74LVC2G34 device executes the Boolean function $Y=A$ in positive logic.

CMOS devices have high output driving capabilities while maintaining low static power consumption over a wide VCC operating range.

This device is packaged in SOT23-6 and SC70-6. The working temperature range is $-40^{\circ}\text{C} \sim +125^{\circ}\text{C}$.

◆ Product features

- Small Package: SOT23-6、SC70-6
- Working voltage range: 1.65V~5.5V
- Low power consumption: 0.1 μ A (typical value)
- Working temperature range: $-40^{\circ}\text{C} \sim +125^{\circ}\text{C}$
- Input voltage up to 5.5V
- Output driver: When powered by 3.0V, output driver $\pm 24\text{mA}$
- I_{off} supports partial power-off mode operation;

◆ Applications

- Communication receiver
- Blu ray player and home theater
- Desktop or laptop computer
- Digital Video Camera (DVC)
- mobile phone
- Personal Navigation Device (GPS)
- Portable media player

◆ Packaging and Order Description

Product Name	Order model	Temperature range ($^{\circ}\text{C}$)	boxed type	screen printing	MSL	Packing Specification
SN74LVC2G34	SN74LVC2G34DCKR	$-40^{\circ}\text{C} \sim +125^{\circ}\text{C}$	SC70-6	C9F	MSL3	Tape and Reel, 3000
	SN74LVC2G34DBVR	$-40^{\circ}\text{C} \sim +125^{\circ}\text{C}$	SOT23-6	C345	MSL3	Tape and Reel, 3000

Note:

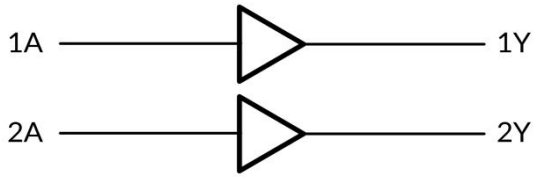
(1) This information is the latest data for the current version. If these data are updated, they will be promptly updated on our official website without further notice.

(2) Silk screen printing may have additional codes for internal control traceability of products (including data codes and supplier codes) or marking the place of origin.

(3) MSL, Humidity sensitivity level classified according to JEDEC industry standards.

(4) equivalent SOT363

◆ **Logic diagram**

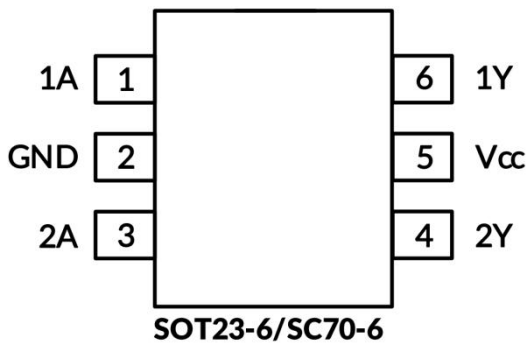


◆ **Menu**

Input	Output
A	Y
H	L
L	H

Y = A
H = High level
L = Low level

◆ **Pin definition and function:**




Pin	Pin Name	I/O	Function Description
1	1A	I	1A input
2	GND	P	grounding
3	2A	I	2A input
4	2Y	O	2Y output
5	Vcc	P	power supply
6	1Y	O	1Y output

◆ Absolute maximum rating Within the natural ventilation temperature range (unless otherwise specified)

	Parameter	Min	Max	Unit	
V_{CC}	Power supply voltage range	-0.5	6.5	V	
V_I	Input voltage range	-0.5	6.5	V	
V_O	The voltage range applicable to any output under high impedance or power-off conditions	-0.5	6.5	V	
V_O	The voltage range applicable to any output in either high or low level state	-0.5	$V_{CC}+0.5$	V	
I_{IK}	Input clamp current $V_I < 0$	-	-50	mA	
I_{OK}	Output clamp current $V_O < 0$	-	-50	mA	
I_O	Continuous output current	-	± 50	mA	
	Continuous current through VCC or GND	-	± 100	mA	
• current parameters					
θ_{JA}	Thermal resistance to the environment	SOT23-6	-	230	°C/W
		SC70-6	-	265	
• current parameters					
temperature parameter	Junction temperature, T_J	-65	150	°C	
	Storage temperature range, T_{stg}	-65	150		

◆ ESD level

The following ESD information is only applicable to sensitive equipment operated within an ti-static protection zones

	nominal value	Unit	 ESD sensitivity warning The scope of ESD damage can range from minor performance degradation to complete equipment failure. Precision integrated circuits may be more susceptible to damage as very small parameter changes can result in devices not meeting their published parameter specifications
human model	± 4000	V	
Charged Device Model	± 1500		
Mechanical Model (MM)	± 200		

Note:

- (1) This only represents the limit values obtained by the product under testing conditions, and does not mean that the product can work normally under these conditions or other parameter conditions beyond the specifications. Exceeding the range specified by the absolute maximum rated value above will cause damage to the product, and it is impossible to predict the working state of the product outside of the above conditions. If the product operates under conditions other than those mentioned above for a long time, it may affect its performance.
- (2) If the input and output current ratings are followed, it may exceed the input and output negative voltage ratings.
- (3) The value of VCC is provided in the recommended working condition table.
- (4) The thermal impedance of the package is calculated according to JESD-51 standard:
- (5) The maximum power consumption is a function of $T_{J(MAX)}$, $R_{\theta JA}$, and T_A . The maximum power consumption at any ambient temperature is $P_D = (T_{J(MAX)} - T_A) / R_{\theta JA}$, which is suitable for packaging directly soldered to PCB.

◆ Electrical Characteristics

Within the natural ventilation temperature range (typical test conditions: TA=+25°C, full temperature=-40°C~125°C)

◆ Recommended working conditions

Parameter	Symbol	Test conditions	Min	Max	Unit
power supply voltage	V _{CC}	work	1.65	5.5	V
		Only retain data	1.5	-	
High level input voltage	V _{IH}	V _{CC} = 1.65V to 1.95V V _{CC} = 2.3V to 2.7V V _{CC} = 3V to 3.6V V _{CC} = 4.5V to 5.5V	0.65 xV _{CC} 1.7 2 0.7 xV _{CC}	-	V
Low level output voltage	V _I	V _{CC} = 1.65V to 1.95V V _{CC} = 2.3V to 2.7V V _{CC} = 3V to 3.6V V _{CC} = 4.5V to 5.5V	-	0.35 xV _{CC} 0.7 0.8 0.3 xV _{CC}	V
input voltage	V _I	-	0	5.5	V
output voltage	V _O	-	0	V _{CC}	V
Input conversion up or down rate	Δt/Δv	V _{CC} = 1.8V ± 0.15V, 2.5V ± 0.2V V _{CC} = 3.3V ± 0.3V V _{CC} = 5V ± 0.5V	-	-	-
Working temperature range under natural ventilation conditions	T _A	-	-40	+125	°C

All unused input ports of the device must be kept at V_{CC} or GND to ensure proper operation of the device.

◆ DC characteristics

Parameter	Test conditions	Vcc	temperature	Min	Typ	Max	Unit
V _{OH}	I _{OH} = -100μA	1.65V to 5.5V	Full temperature	V _{CC} -0.1	-	-	V
	I _{OH} = -4mA	1.65V		1.2			
	I _{OH} = -8mA	2.3V		1.9			
	I _{OH} = -16mA	3V		2.4			
	I _{OH} = -24mA			2.3			
	I _{OH} = -32mA	4.5V		3.8			
V _{OL}	I _{OL} = 100μA	1.65V to 5.5V	Full temperature	-	-	0.1	V
	I _{OL} = 4mA	1.65V		-	-	0.45	
	I _{OL} = 8mA	2.3V		-	-	0.3	
	I _{OL} = 16mA	3V		-	-	0.4	
	I _{OL} = 24mA			-	-	0.55	
	I _{OL} = 32mA	4.5V		-	-	0.55	
I _I A input	V _I = 5.5V or GND	0V to 5.5V	+25°C Full temperature	-	±0.1	±5	μA
I _{off}	V _I or V _O = 5.5V	0	+25°C Full temperature	-	±0.1	±10	μA
I _{CC}	V _I = 5.5V or GND, I _O = 0	1.65V to 5.5V	+25°C Full temperature	-	0.1	10	μA
ΔI _{CC}	One input at V _{CC} -0.6V, Other inputs at V _{CC} or GND	3V to 5.5V	Full temperature	-	-	500	μA
C _i (Input capacitor)	V _I = V _{CC} or GND	3.3V	+25°C	-	4	-	pF

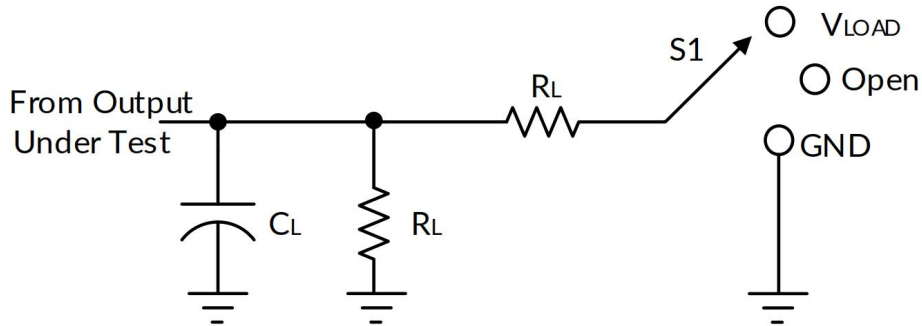
- (1) All unused input ports of the device must be kept at VCC or GND to ensure proper operation of the device.
- (2) The limit value is 100% production testing conducted at 25°C. Ensure the limitation of the working temperature range by utilizing the correlation of statistical quality control (SQC) methods.
- (3) Typical values represent the most likely parameter specifications determined during characterization. The actual typical values may vary over time and will also depend on the application and configuration.

◆ AC characteristics

Parameter	Symbol	Test conditions		Min	Typ	Max	Unit
propagation delay	t _{pd}	V _{CC} = 1.8V ± 0.15V V _{CC} = 2.5V ± 0.2V V _{CC} = 3.3V ± 0.3V V _{CC} = 5V ± 0.5V	C _L = 30 pF, R _L = 1 kΩ C _L = 30 pF, R _L = 500 Ω C _L = 50 pF, R _L = 500 Ω C _L = 50 pF, R _L = 500 Ω	-	13.3 5.3 4.2 3.4	-	ns
Powerconsumption capacitor	C _{pd}	V _{CC} = 1.8V V _{CC} = 2.5V V _{CC} = 3.3V V _{CC} = 5V	f = 10MHz	-	16 18 18 20	-	pF

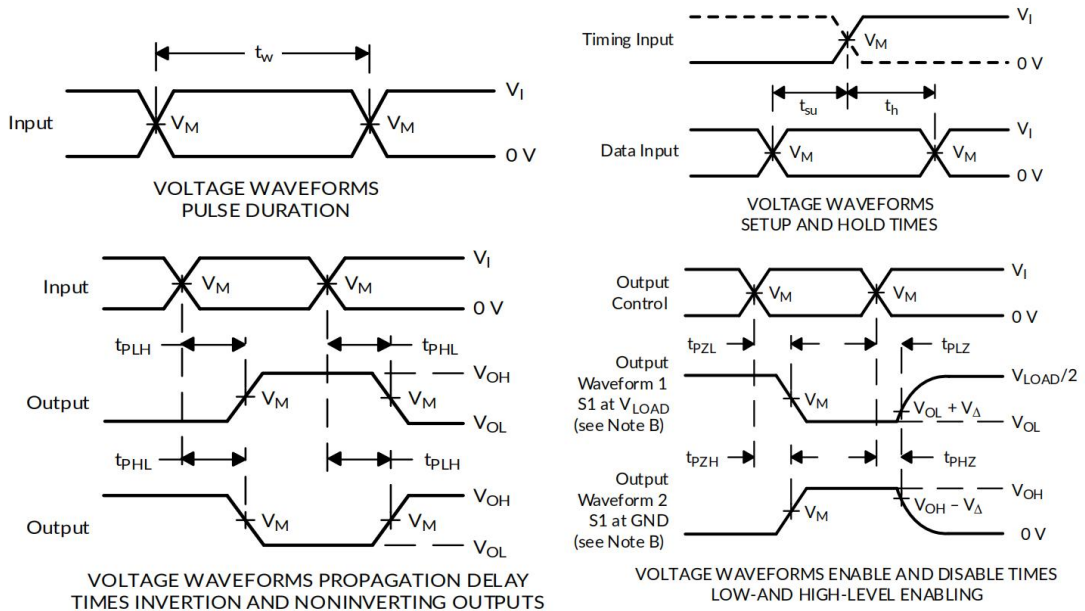
- (1) All unused input ports of the device must be kept at VCC or GND to ensure proper operation of the device.
- (2) This parameter is ensured by design and/or characteristics and has not been tested in production
- (3) Typical values represent the most likely parameter specifications determined during characterization. The actual typical values may vary over time and will also depend on the application and configuration.

◆ **Parameter measurement information**



TEST	S1
tPLH/tPHL	Open
tPLZ/tPZL	V _{LOAD}
tPHZ/tPZH	GND

V _{CC}	INPUTS		V _M	V _{LOAD}	C _L	R _L	V _Δ
	V _I	t _r /t _f					
1.8V±0.15V	V _{CC}	≤2ns	V _{CC} /2	2 x V _{CC}	30pF	1kΩ	0.15V
2.5V±0.2V	V _{CC}	≤2ns	V _{CC} /2	2 x V _{CC}	30pF	500Ω	0.15V
3.3V±0.3V	3V	≤2.5ns	1.5V	6V	50pF	500Ω	0.3V
5V±0.5V	V _{CC}	≤2.5ns	V _{CC} /2	2 x V _{CC}	50pF	500Ω	0.3V



Note: A.CL includes probe and fixture capacitors.

B. Waveform 1 is used for outputs with internal conditions, where the output is low unless disabled by the output controller.

Waveform 2 is used for outputs with internal conditions, where the output is high unless disabled by the output controller.

C. All input pulses are provided by a generator with the following characteristics: PRR ≤ 10 MHz, Zo=50 Ω

D. Output one measurement at a time, with a transition for each measurement.

E. TPLZ and tPHZ are the same as tdis.

F. TPZL and tPZH are the same as ten.

G. TPLH and tPHL are the same as tpd.

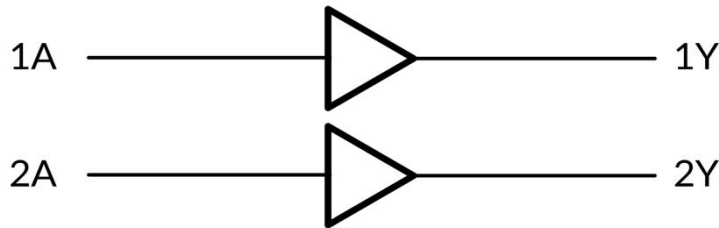
H. Not all parameters and waveforms are applicable to all devices.

◆ Detailed description

Overview

The SN74LVC2G34 device contains two buffer gates and executes the Boolean function $Y=A$. This device can be used for Ioff local power outage applications. When the device is powered off, the Ioff circuit will disable the output to prevent backflow current from damaging the device.

Functional Block Diagram



Feature Description

- Wide operating voltage range.
-The working voltage range is 1.65V to 5.5V.
- Allow voltage reduction conversion.
- The input voltage is as high as 5.5V.
- The I_{off} function allows voltage to be provided on the input and output when V_{CC} is 0V.

◆ Application and Design

Application Information

SN74LVC2G34 is a high drive CMOS device that can be used as a buffer with high output drive, such as in LED applications. It can generate a driving current of 24mA at a voltage of 3.0V, making it ideal for driving multiple outputs and suitable for high-speed applications up to 100MHz. The input can withstand a voltage of 5.5V, allowing it to be converted down to V_{CC} .

Design requirements

This device adopts CMOS technology and has balanced output drive. Attention should be paid to avoiding bus contention as it may drive currents exceeding the maximum limit. High drive can also generate fast edges in light loads, so wiring and load conditions should be considered to prevent ringing.

◆ Power recommendations

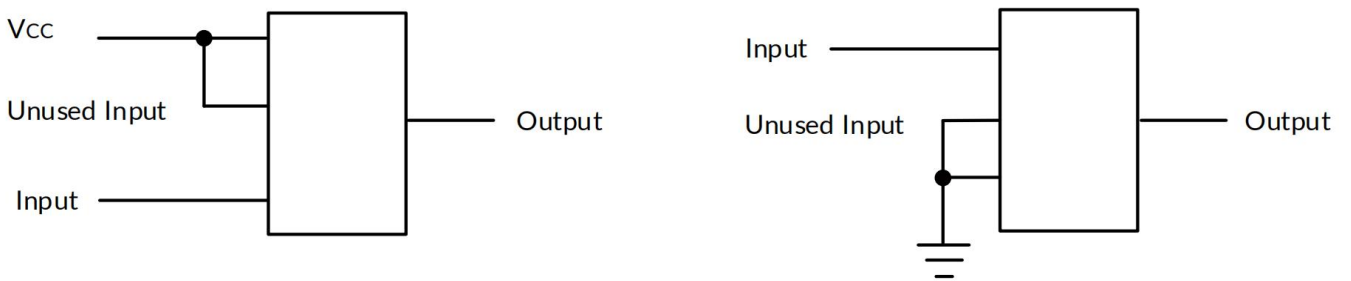
The power pins should be equipped with good bypass capacitors to prevent power interference. For devices powered by a single power source, it is recommended to use a 0.1 μF capacitor; For devices with multiple V_{CC} pins, it is recommended to use capacitors with 0.01 μF or 0.022 μF for each power pin. Multiple bypass capacitors can be connected in parallel to suppress noise of different frequencies. Usually, capacitors with 0.1 μF and 1 μF are used in parallel. The bypass capacitor should be installed as close as possible to the power supply pin.

◆ **PCB layout design**

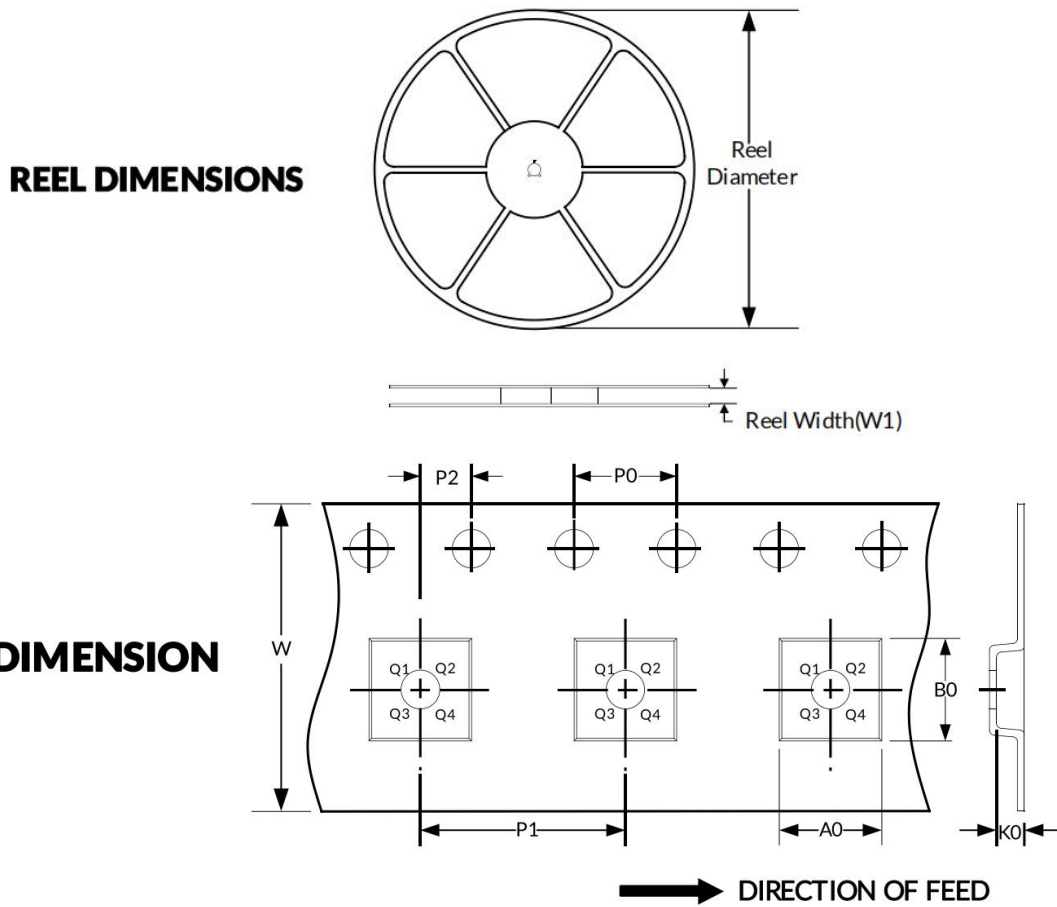
Precautions for PCB layout design

When using multi bit logic devices, the input pins should not be suspended. In practical applications, some functions of digital logic devices are often idle, such as using only two inputs from the three input gate or enabling only three gates from the four buffer gate. These unused input pins should not be left hanging, as undefined external connection point voltage will cause abnormal device operation. The following specifies the rules that must be followed in all situations. All idle input pins must be connected to a high or low bias to eliminate the risk of floating. The specific logic level that needs to be applied to the idle pin depends on the device's functional characteristics. The conventional approach is to connect it to GND or V_{CC} , depending on the actual convenience.

PCB layout diagram



◆ **Packaging specifications size**



Attention: The pictures are for reference only. Please use the physical object as the standard

◆ **Key parameter table**

Package Type	Reel Diameter	Reel Width (mm)	A0 (mm)	B0 (mm)	K0 (mm)	P0 (mm)	P1 (mm)	P2 (mm)	W (mm)	Pin1 Quadrant
SC70-6	7"	9.5	2.40	2.50	1.20	4.0	4.0	2.0	8.0	Q3
SOT23-6	7"	9.5	3.17	3.23	1.37	4.0	4.0	2.0	8.0	Q3

Note:

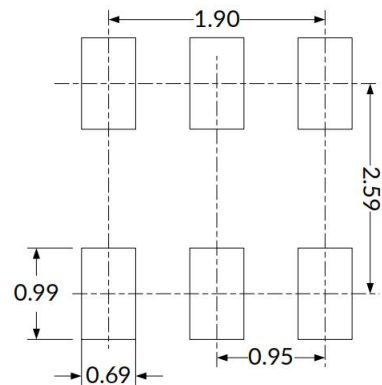
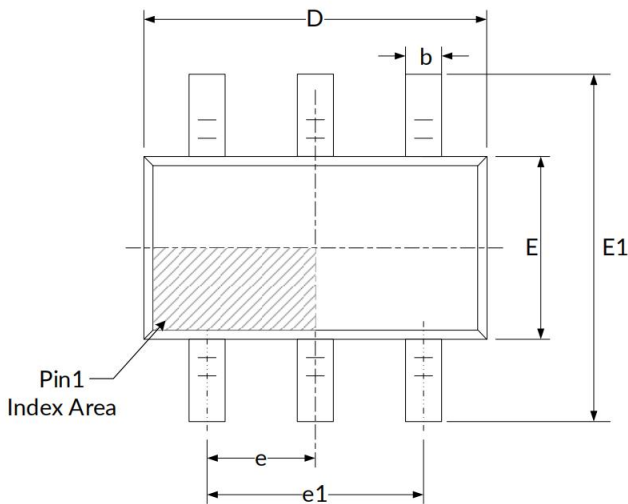
- 1.All dimensions are nominal sizes.
- 2.Excluding plastic wrap or metal protrusions with a maximum of 0.15 millimeters on each side.

◆ **Packaging specifications and dimensions**

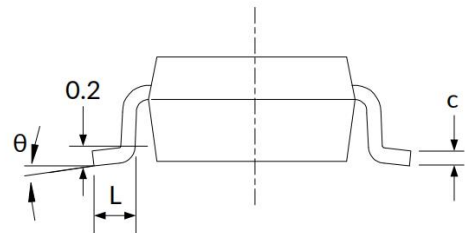
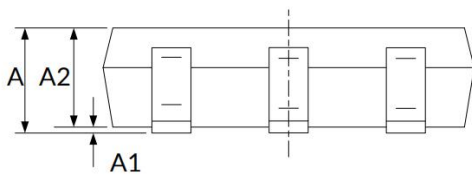
Note:

- 1.Excluding plastic wrap or metal protrusions with a maximum of 0.15mm on each side.
- 2.BSC (Basic Center Spacing), where the "basic" spacing is the nominal spacing.
- 3.This image is subject to change without prior notice

SOT23-6



RECOMMENDED LAND PATTERN (Unit: mm)



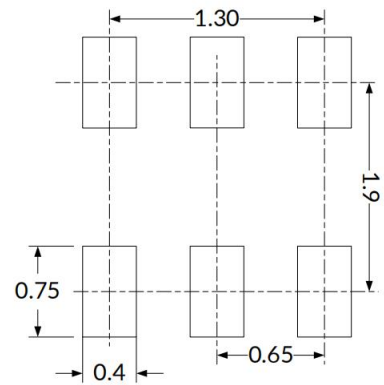
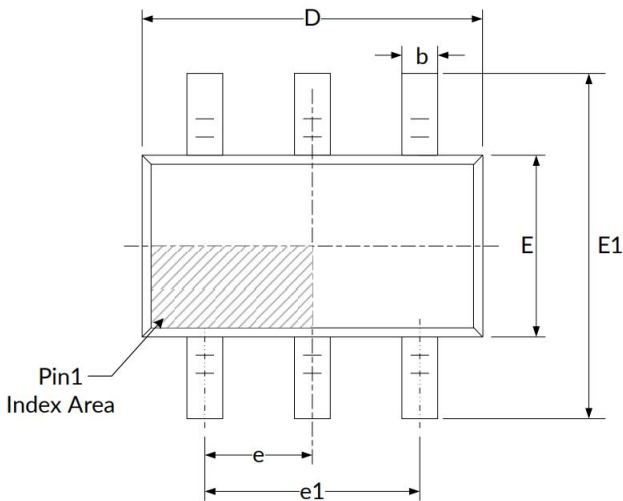
Symbol	Dimensions (in millimeters)		Dimensions (in inches)	
	Min	Max	Min	Max
A	1.050	1.250	0.041	0.049
A1	0.000	0.100	0.000	0.004
A2	1.050	1.150	0.041	0.045
b	0.300	0.500	0.012	0.020
c	0.100	0.200	0.004	0.008
D	2.820	3.020	0.111	0.119
E	1.500	1.700	0.059	0.067
E1	2.650	2.950	0.104	0.116
e	0.950 (BSC)		0.037 (BSC)	
e1	1.800	2.000	0.071	0.079
L	0.300	0.600	0.012	0.024
θ	0°	8°	0°	8°

◆ **Packaging specifications and dimensions**

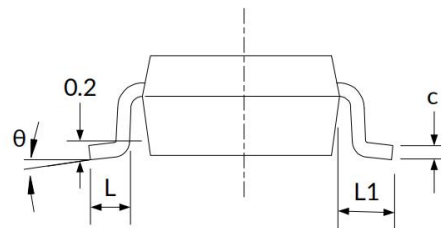
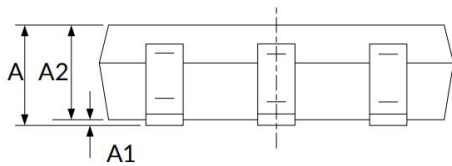
Note:

- 1.Excluding plastic wrap or metal protrusions with a maximum of 0.15mm on each side.
- 2.BSC (Basic Center Spacing), where the "basic" spacing is the nominal spacing.
- 3.This image is subject to change without prior notice

SC70-6



RECOMMENDED LAND PATTERN (Unit: mm)



Symbol	Dimensions (in millimeters)		Dimensions (in inches)	
	Min	Max	Min	Max
A	0.900	1.100	0.035	0.043
A1	0.000	0.100	0.000	0.004
A2	0.900	1.000	0.035	0.039
b	0.150	0.350	0.006	0.014
c	0.080	0.150	0.003	0.006
D	2.000	2.200	0.079	0.087
E	1.150	1.350	0.045	0.053
E1	2.150	2.450	0.085	0.096
e	0.650 (BSC)		0.026(BSC)	
e1	1.300 (BSC)		0.051(BSC)	
L	0.260	0.460	0.010	0.018
L1	0.525		0.021	
θ	0°	8°	0°	8°

◆ Attention

- AOTE implements dynamic technical updates. Specifications are subject to change. Refer to the official website for the latest version.
- Users must strictly adhere to specified conditions. Failures caused by misuse (overload, high temperature, incompatible circuits) are excluded from warranty.
- Contact technical support for customized validation in critical applications (medical devices, industrial control).
- This document is valid until December 31, 2026. Updates will be notified on the official website.
- For further clarification on technical specifications or application solutions, please contact us through official channels: