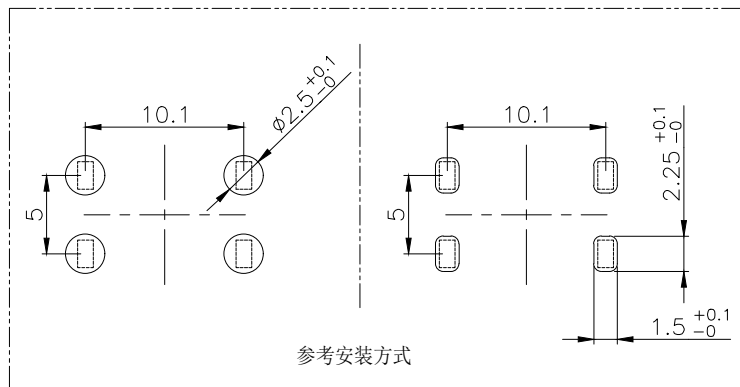
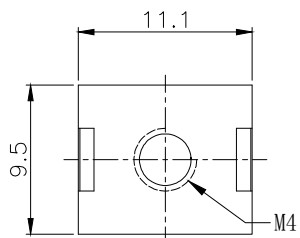


NOTES:

备注

1. Copper, nickel base, matte tin
黄铜H62, 镍底, 镀雾锡
2. Wire screw hole M4
压线螺孔M4
3. Current Rating: 60A
额定电流: 60A
4. Operating temperature: -40°C ~ +125°C
工作温度: -40°C ~ +125°C
5. There shall be no defects such as pin deformation and burrs.
不得有脚变形, 毛刺等缺陷
6. Unmarked dimensions refer to tolerances
未标注的尺寸参考公差



Ordering Information

HC - * * * * - * * * * - D * * * * - 02

Type	Screw Thread	Welding Feet	T=Anti Twist	Series	D=HIP	Product No.	Material
M=Pull Teeth (抽牙)	S=M5 (螺牙)	S=MT (焊脚)	(防止扭动)	0808=8x8mm 1620=16x20mm	S=MT (黄铜) FD=Flag Dip	产品序号	默认=Copper (黄铜) 默认=Copper (黄铜)
RN=Rivet Nut (铆螺母)	4=M5 (螺牙)	2=2个
S=M5 (螺牙)	4=4个	4=4个
RG=Rivet Gasket (铆垫片)	6=M6 (螺牙)	6=6个

			GENEERL TOLERANCE	制图 DRAWING	02	深圳市华灿天禄电子有限公司 ShenzhenhuacantianluELECTRONICS CO., LTD			
			DIM TOL	审核 CHECK		产品名称 TITLE	PCB 焊接端子 插板 铆垫片 M4 4焊脚 11.1x9.5x10.6mm	版本 REV.	A
			5 or more ±0.35	批准 APPROVAL		产品料号 PART NO.	HC-RG44-1109-D060-02	单位 UNITS	mm
			2~5 ±0.25	比例 SCALE		材料 MATERIAL		页次 SHEET	1/1
			0~2 ±0.15	投影 Projection					
序号 No.	变更内容 MODIFY CONTENT	日期 MODIFY DATE	Angle ±3.0°						