

4-Bit Bidirectional Voltage-Level Translator for Open-Drain and Push-Pull Applications

It uses two separate configurable power-supply rails, with the A ports supporting operating voltages from 1.65V to 5.5V while it tracks the V_{CCA} supply, and the B ports supporting operating voltages from 2.3V to 5.5V while it tracks the V_{CCB} supply. This allows the support of both lower and higher logic signal levels while providing bidirectional translation capabilities between any of the 1.8V, 2.5V, 3.3V and 5V voltage nodes. When the output-enable(OE) input is low, all outputs are placed in the high-impedance state. The HT8104A is designed so that the OE input circuit is supplied by V_{CCA} . To ensure the high-impedance state during power up or power down, OE should be tied to GND through a pull down resistor; the minimum value of the resistor is determined by the current-sourcing capability of the driver.

1. Feature

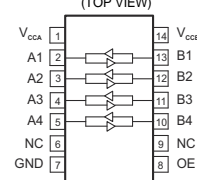
- No Direction-Control
- Data Rates
 - 24Mbps (Push-Pull)
 - 2Mbps (Open-Drain)
- 1.65V to 5.5V on A ports and 2.3V to 5.5V on B Ports ($V_{CCA} \leq V_{CCB}$)
- V_{CC} Isolation: If Either V_{CC} is at GND, Both Ports are in the High-Impedance State
- No Power-Supply Sequencing Required: Either V_{CCA} or V_{CCB} can be Ramped First
- I_{OFF} : Supports Partial-Power-Down Mode Operation
- Extended Temperature: -40°C to $+85^{\circ}\text{C}$
- Latch-Up Performance Exceeds 100 mA
- ESD Protection:
 - 4-kV Human-Body Model (HBM)
 - 2-kV Charged-Device Model (CDM)

2. Applications


- Handset
- Smartphone
- Tablet
- Desktop PC

PIN CONFIGURATION

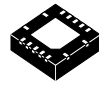
(TOP VIEW)



ORDERING INFORMATION



TSSOP14
RT SUFFIX
HT8104ARTZ



QFN14
RQ SUFFIX
HT8104ARQZ

&HT8104	= Specific Device Code
&A	= Version
&RT,RQ	= Packaging
&Z	= Pb-Free Package
&#	= Date Code

$T_A = -40^{\circ}$ to 125°C for all packages

Functional Block Diagram

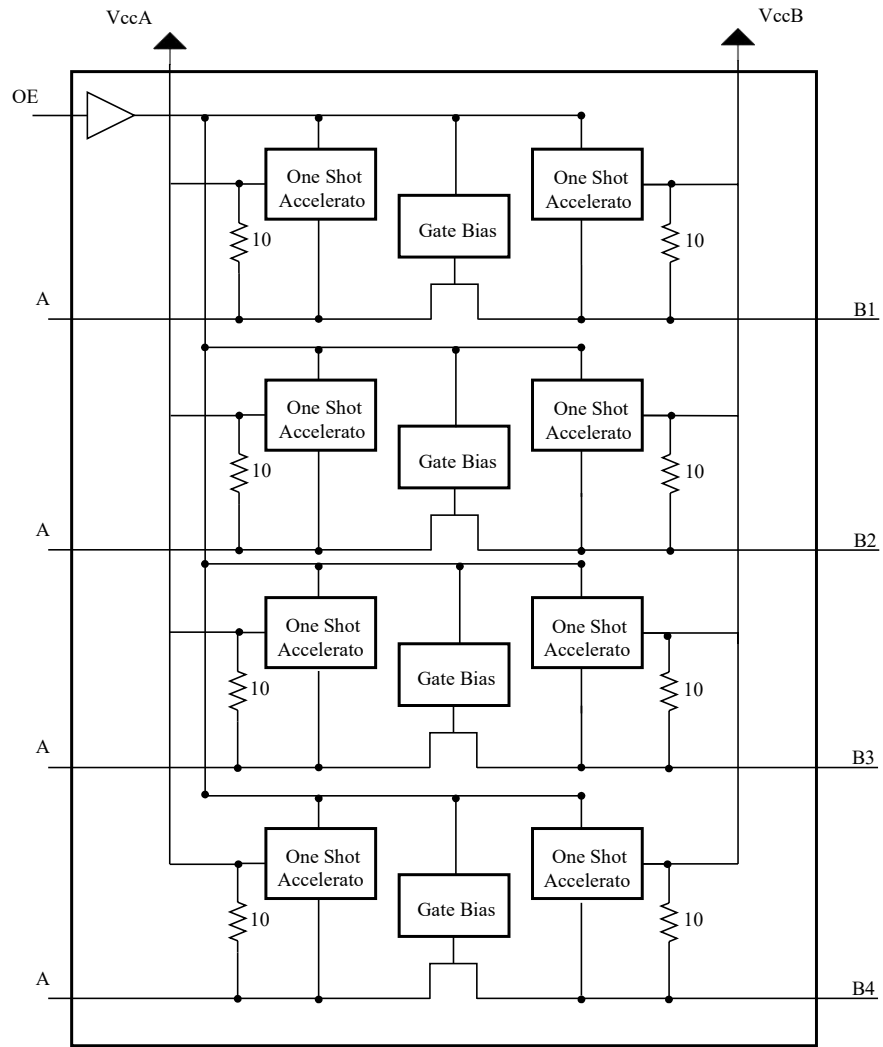
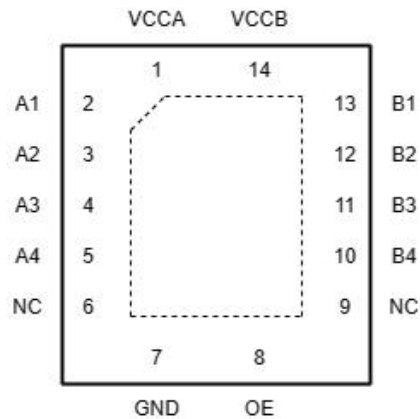


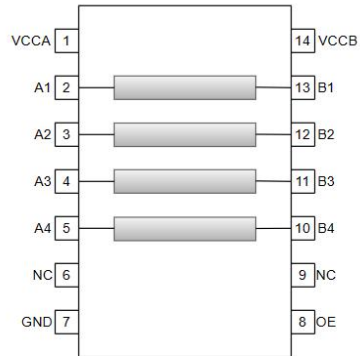
Figure 1. Block Diagram

5. PAD Definition


14-Pin QFN Top View
 Fig.2 Pad definition of HT8104ARQZ

Pin Functions:QFN3.5x3.5-14L

Pin	Name	I/O	DESCRIPTION
1	VCCA	POWER	A-port supply voltage. $1.65\text{ V} \leq V_{CCA} \leq 5.5\text{ V}$ and $V_{CCA} \leq V_{CCB}$.
2	A1	I/O	Input/output A1. Referenced to V_{CCA} .
3	A2	I/O	Input/output A2. Referenced to V_{CCA} .
4	A3	I/O	Input/output A3. Referenced to V_{CCA} .
5	A4	I/O	Input/output A4. Referenced to V_{CCA} .
6	NC	-	No internal connection.
7	GND	GROUND	Device ground
8	OE	I	3-state output-mode enable. Pull OE low to place all outputs in 3-state mode. Referenced to V_{CCA} .
9	NC	-	No internal connection.
10	B4	I/O	Input/output B4. Reference to V_{CCB} .
11	B3	I/O	Input/output B3. Reference to V_{CCB} .
12	B2	I/O	Input/output B2. Reference to V_{CCB} .
13	B1	I/O	Input/output B1. Reference to V_{CCB} .
14	VCCB	POWER	B-port supply voltage. $2.3\text{ V} \leq V_{CCB} \leq 5.5\text{V}$.
—	Thermal Pad	—	Exposed pad should be soldered to PCB board and connected to GND or left floating.

PAD Definition


14-Pin TSSOP Top View Pad definition of HT8104ARTZ

Pin Functions:TSSOP14L

Pin	Name	I/O	DESCRIPTION
1	VCCA	POWER	A-port supply voltage. $1.65\text{ V} \leq V_{CCA} \leq 5.5\text{ V}$ and $V_{CCA} \leq V_{CCB}$.
2	A1	I/O	Input/output A1. Referenced to V_{CCA} .
3	A2	I/O	Input/output A2. Referenced to V_{CCA} .
4	A3	I/O	Input/output A3. Referenced to V_{CCA} .
5	A4	I/O	Input/output A4. Referenced to V_{CCA} .
6	NC	-	No internal connection.
7	GND	GROUND	Device ground
8	OE	I	3-state output-mode enable. Pull OE low to place all outputs in 3-state mode. Referenced to V_{CCA} .
9	NC	-	No internal connection.
10	B4	I/O	Input/output B4. Reference to V_{CCB} .
11	B3	I/O	Input/output B3. Reference to V_{CCB} .
12	B2	I/O	Input/output B2. Reference to V_{CCB} .
13	B1	I/O	Input/output B1. Reference to V_{CCB} .
14	VCCB	POWER	B-port supply voltage. $2.3\text{ V} \leq V_{CCB} \leq 5.5\text{ V}$.

6. Specifications

6.1 Absolute Maximum Ratings

Over operating free-air temperature range (unless otherwise noted)⁽¹⁾

SYMBOL	PARAMETER	MIN	MAX	units	
VCCA	Supply Voltage Range	-0.3	6.0	V	
VCCB	Supply Voltage Range	-0.3	6.0	V	
V _I ⁽²⁾	Input Voltage Range	A port	-0.3	6.0	V
		B port	-0.3	6.0	
		OE	-0.3	6.0	
V _O ⁽²⁾	Voltage range applied to any output in the high impedance or power-off state	A port	-0.3	6.0	V
		B port	-0.3	6.0	
V _O ⁽²⁾⁽³⁾	Voltage range applied to any output in the high or low state	A port	-0.3	V _{CCA} +0.3	V
		B port	-0.3	V _{CCB} +0.3	
I _{IK}	Input clamp current	V _I <0		-50	mA
I _{OK}	Output clamp current	V _O <0		-25	mA
I _O	Continuous output current			±50	mA
	Continuous current through VCCA, VCCB or GND			±100	mA
T _J	Junction Temperature			150	°C
T _{stg}	Storage temperature	-60		150	°C

(1) Stresses beyond those listed under Absolute Maximum Ratings may cause permanent damage to the device. These are stress ratings only, and functional operation of the device at these or any other conditions beyond those indicated under Recommended Operating Conditions is not implied. Exposure to absolute-maximum-rated conditions for extended periods may affect device reliability.

(2) The input and output negative-voltage ratings may be exceeded if the input and output current ratings are observed.

(3) The value of VCCA and VCCB are provided in the recommended operating conditions table.

6.2 ESD Rating

Symbol	parameter	rating	units
V(ESD) Electrostatic discharge	Human-Body Model (HBM)	±4000	V
	Charged-Device Model (CDM)	±2000	V

6.3 Recommended Operating Conditions

VCCI is the supply voltage associated with the input port. VCCO is the supply voltage associated with the output port.

PARAMETER		VCCA	VCCB	MIN	MAX	UNIT
Supply voltage ⁽¹⁾	VCCA			1.65	5.5	V
	VCCB			2.3	5.5	
High-level input voltage (V _{IH})	A-port I/Os	1.65 V to 1.95 V	2.3 V to 5.5 V	VCCI – 0.2	VCCI	V
		2.3 V to 3.6 V		VCCI – 0.4	VCCI	
	B-port I/Os	1.65 V to 3.6 V	2.3 V to 5.5 V	VCCI – 0.4	VCCI	
	OE input	1.65 V to 3.6 V	2.3 V to 5.5 V	VCCI×0.8	5.5	
Low-level input voltage (V _{IL})	A-port I/Os	1.65 V to 3.6 V	2.3 V to 5.5 V	0	0.15	V
	B-port I/Os	1.65 V to 3.6 V	2.3 V to 5.5 V	0	0.15	
	OE input	1.65 V to 3.6 V	2.3 V to 5.5 V	0	VCCI×0.25	
Input transition rise or fall rate(Δt/Δv)		1.65 V to 3.6 V	2.3 V to 5.5 V		10	ns/V
		1.65 V to 3.6 V	2.3 V to 5.5 V		10	
		1.65 V to 3.6 V	2.3 V to 5.5 V		10	
T _A Operating free-air temperature				-40	125	°C

(1) VCCA must be less than or equal to VCCB.

(2) The maximum V_{IL} value is provided to ensure that a valid V_{OL} is maintained. The V_{OL} value is V_{IL} plus the voltage drop across the pass gate transistor.

6.4 Electrical Characteristics

over recommended operating free-air temperature range (unless otherwise noted) (1) (2) (3)

PARAMETER		CONDITIONS	V _{CCA}	V _{CCB}	TEMP	MIN	TYP	MAX	UNITS
V _{OH} _A	Port A output high voltage	I _{OH} = -20 μA V _{IB} ≥ V _{CCB} - 0.4V	1.65V to 5.5V	2.3V to 5.5V	Full	V _{CCA} × 0.8			V
V _{OL} _A	Port A output low voltage	I _{OL} = 1mA V _{IB} ≤ 0.15V	1.65V to 5.5V	2.3V to 5.5V	Full			0.4	
V _{OH} _B	Port B output high voltage	I _{OH} = -20 μA V _{IA} ≥ V _{CCA} - 0.4 V	1.65V to 5.5V	2.3V to 5.5V	Full	V _{CCB} × 0.8			
V _{OL} _B	Port B output low voltage	I _{OL} = 1mA V _{IA} ≤ 0.15 V	1.65V to 5.5V	2.3V to 5.5V	Full			0.4	
I _I	Input leakage current	OE	1.65V to 5.5V	2.3V to 5.5V	+25°C	-1		1	μA
					Full	-1.5		1.5	
I _{off}	Partial power down current	A Ports	0V	0V to 5.5V	+25°C	-0.5		0.5	μA
					Full	-1		1	
		B Ports	0V to 5.5V	0V	+25°C	-0.5		0.5	μA
					Full	-1		1	
I _{oz}	High-impedance State output current	A or B port OE=0V	1.65V to 5.5V	2.3V to 5.5V	+25°C	-1		1	μA
					Full	-1.5		1.5	
I _{CCA}	V _{CCA} supply current	V _I = V _O = open I _O = 0	1.65V to V _{CCB}	2.3V to 5.5V	+25°C			1.0	μA
			5.5V	0V	Full			1.0	
			0V	5.5V	Full			-1	
I _{CCB}	V _{CCB} supply current	V _I = V _O = open I _O = 0	1.65V to V _{CCB}	2.3V to 5.5V	+25°C	5		15	μA
			5.5V	0V	Full			-1	
			0V	5.5V	Full			1	
I _{CCA} + I _{CCB}	Combined supply current	V _I = V _{CCi} or GND I _O = 0	1.65V to V _{CCB}	2.3V to 5.5V	+25°C			16	μA
I _{CCZ} _A	V _{CCA} supply current	V _I = V _{CCi} or 0V I _O = 0, OE=0V	1.65V to V _{CCB}	2.3V to 5.5V	Full			1	μA
I _{CCZ} _B	V _{CCB} supply current	V _I = V _{CCi} or 0V I _O = 0, OE=0V	2.3V to 5.5V	2.3V to 5.5V	Full			1	μA
C _I	Input capacitance	OE	3.3V	3.3V	+25°C		2.5		pF
C _{IO}	Input-to-output internal capacitance	A port	3.3V	3.3V	+25°C		5		pF
		B port	3.3V	3.3V	+25°C		5		

(1) V_{CCI} is the VCC associated with the input port.

(2) V_{CCO} is the VCC associated with the output port.

(3) V_{CCA} must be less than or equal to V_{CCB}.

6.5 Timing Requirements

VCCA=1.8V±0.15V

		V _{CCB} =2.5V ±0.2V	V _{CCB} =3.3V ±0.3V	V _{CCB} =5V ±0.5V	UNIT
		TYP	TYP	TYP	
Data rate	Push-pull driving	24	24	24	Mbps
	Open-drain driving	2	2	2	
Pulse duration(t _w)	Push-pull driving (data inputs)	41	41	41	ns
	Open-drain driving (data inputs)	500	500	500	

VCCA=2.5V±0.2V

		V _{CCB} =2.5V ±0.2V	V _{CCB} =3.3V ±0.3V	V _{CCB} =5V ±0.5V	UNIT
		TYP	TYP	TYP	
Data rate	Push-pull driving	24	24	24	Mbps
	Open-drain driving	2	2	2	
Pulse duration(t _w)	Push-pull driving (data inputs)	41	41	41	ns
	Open-drain driving (data inputs)	500	500	500	

VCCA=3.3V±0.3V

		V _{CCB} =3.3V ±0.3V	V _{CCB} =5V ±0.5V	UNIT
		TYP	TYP	
Data rate	Push-pull driving	24	24	Mbps
	Open-drain driving	2	2	
Pulse duration(t _w)	Push-pull driving (data inputs)	41	41	ns
	Open-drain driving (data inputs)	500	500	

VCCA=5V±0.5V

		V _{CCB} =5V ±0.5V	UNIT
		TYP	
Data rate	Push-pull driving	24	Mbps
	Open-drain driving	2	
Pulse duration(t _w)	Push-pull driving (data inputs)	41	ns
	Open-drain driving (data inputs)	500	

6.6 Switching Characteristics: $V_{CCA}=1.8V\pm 0.15V$

 over recommended operating free-air temperature range, $V_{CCA} = 1.8 V \pm 0.15 V$ (unless otherwise noted)

PARAMETER		TEST CONDITIONS		MIN	MAX	UNIT	
t _{PHL}	Propagation delay time (high-to-low output)	A-to-B	Push-pull driving	$V_{CCB} = 2.5 V \pm 0.2 V$	4.6		ns
				$V_{CCB} = 3.3 V \pm 0.3 V$	4.7		
				$V_{CCB} = 5 V \pm 0.5 V$	5.8		
			Open-drain driving	$V_{CCB} = 2.5 V \pm 0.2 V$	3.1	9.0	
				$V_{CCB} = 3.3 V \pm 0.3 V$	4.2	11.9	
				$V_{CCB} = 5 V \pm 0.5 V$	6.3	17.6	
t _{PLH}	Propagation delay time (low-to-high output)	A-to-B	Push-pull driving	$V_{CCB} = 2.5 V \pm 0.2 V$	6.8		ns
				$V_{CCB} = 3.3 V \pm 0.3 V$	6.8		
				$V_{CCB} = 5 V \pm 0.5 V$	7		
			Open-drain driving	$V_{CCB} = 2.5 V \pm 0.2 V$	45	260	
				$V_{CCB} = 3.3 V \pm 0.3 V$	36	208	
				$V_{CCB} = 5 V \pm 0.5 V$	27	198	
t _{PHL}	Propagation delay time (high-to-low output)	B-to-A	Push-pull driving	$V_{CCB} = 2.5 V \pm 0.2 V$	4.4		ns
				$V_{CCB} = 3.3 V \pm 0.3 V$	4.5		
				$V_{CCB} = 5 V \pm 0.5 V$	4.7		
			Open-drain driving	$V_{CCB} = 2.5 V \pm 0.2 V$	1.9	5.3	
				$V_{CCB} = 3.3 V \pm 0.3 V$	1.5	4.4	
				$V_{CCB} = 5 V \pm 0.5 V$	1.2	4.0	
t _{PLH}	Propagation delay time (low-to-high output)	B-to-A	Push-pull driving	$V_{CCB} = 2.5 V \pm 0.2 V$	5.3		ns
				$V_{CCB} = 3.3 V \pm 0.3 V$	4.5		
				$V_{CCB} = 5 V \pm 0.5 V$	1.8		
			Open-drain driving	$V_{CCB} = 2.5 V \pm 0.2 V$	45	175	
				$V_{CCB} = 3.3 V \pm 0.3 V$	36	140	
				$V_{CCB} = 5 V \pm 0.5 V$	27	102	
t _{en}	Enable time	OE-to-A or B	$V_{CCB} = 2.5 V \pm 0.2 V$	36		ns	
			$V_{CCB} = 3.3 V \pm 0.3 V$	41			
			$V_{CCB} = 5 V \pm 0.5 V$	43			
t _{dis}	Disable time	OE-to-A or B	$V_{CCB} = 2.5 V \pm 0.2 V$	77		ns	
			$V_{CCB} = 3.3 V \pm 0.3 V$	68			
			$V_{CCB} = 5 V \pm 0.5 V$	63			
t _{rA}	Input rise time	A-port rise time	Push-pull driving	$V_{CCB} = 2.5 V \pm 0.2 V$	3.4	9.5	ns
				$V_{CCB} = 3.3 V \pm 0.3 V$	2.7	9.3	
				$V_{CCB} = 5 V \pm 0.5 V$	2.2	8.0	
			Open-drain driving	$V_{CCB} = 2.5 V \pm 0.2 V$	38	165	
				$V_{CCB} = 3.3 V \pm 0.3 V$	30	132	
				$V_{CCB} = 5 V \pm 0.5 V$	22	95	
t _{rB}	Input rise time	B-port rise time	Push-pull driving	$V_{CCB} = 2.5 V \pm 0.2 V$	4	10.8	ns
				$V_{CCB} = 3.3 V \pm 0.3 V$	3.2	9.1	
				$V_{CCB} = 5 V \pm 0.5 V$	4.3	7.6	
			Open-drain driving	$V_{CCB} = 2.5 V \pm 0.2 V$	34	145	
				$V_{CCB} = 3.3 V \pm 0.3 V$	23	106	
				$V_{CCB} = 5 V \pm 0.5 V$	10	58	

over recommended operating free-air temperature range, $V_{CCA} = 1.8\text{ V} \pm 0.15\text{ V}$ (unless otherwise noted)

PARAMETER		TEST CONDITIONS		MIN	MAX	UNIT	
t_{fA}	Input fall time	A-port fall time	Push-pull driving	$V_{CCB} = 2.5\text{ V} \pm 0.2\text{ V}$	2	5.9	ns
				$V_{CCB} = 3.3\text{ V} \pm 0.3\text{ V}$	1.9	6.0	
				$V_{CCB} = 5\text{ V} \pm 0.5\text{ V}$	1.7	13.3	
		Open-drain driving	$V_{CCB} = 2.5\text{ V} \pm 0.2\text{ V}$	4.4	7.6		
			$V_{CCB} = 3.3\text{ V} \pm 0.3\text{ V}$	4.3	6.4		
			$V_{CCB} = 5\text{ V} \pm 0.5\text{ V}$	4.2	6.1		
t_{fB}	Input fall time	B-port fall time	Push-pull driving	$V_{CCB} = 2.5\text{ V} \pm 0.2\text{ V}$	2.9	7.6	ns
				$V_{CCB} = 3.3\text{ V} \pm 0.3\text{ V}$	2.8	7.5	
				$V_{CCB} = 5\text{ V} \pm 0.5\text{ V}$	2.8	8.8	
		Open-drain driving	$V_{CCB} = 2.5\text{ V} \pm 0.2\text{ V}$	6.9	13.8		
			$V_{CCB} = 3.3\text{ V} \pm 0.3\text{ V}$	7.5	20.0		
			$V_{CCB} = 5\text{ V} \pm 0.5\text{ V}$	10.2	32.3		
$t_{SK(O)}$	Skew (time), output	Channel-to-channel skew		$V_{CCB} = 2.5\text{ V} \pm 0.2\text{ V}$	1		ns
				$V_{CCB} = 3.3\text{ V} \pm 0.3\text{ V}$	1		
				$V_{CCB} = 5\text{ V} \pm 0.5\text{ V}$	1		
Maximum data rate		Push-pull driving	$V_{CCB} = 2.5\text{ V} \pm 0.2\text{ V}$	24		Mbps	
			$V_{CCB} = 3.3\text{ V} \pm 0.3\text{ V}$	24			
			$V_{CCB} = 5\text{ V} \pm 0.5\text{ V}$	24			
		Open-drain driving	$V_{CCB} = 2.5\text{ V} \pm 0.2\text{ V}$	2			
			$V_{CCB} = 3.3\text{ V} \pm 0.3\text{ V}$	2			
			$V_{CCB} = 5\text{ V} \pm 0.5\text{ V}$	2			

6.7 Switching Characteristics: $V_{CCA}=2.5V\pm0.2V$

 over recommended operating free-air temperature range, $V_{CCA} = 2.5\text{ V} \pm 0.2\text{ V}$ (unless otherwise noted)

PARAMETER		TEST CONDITIONS		MIN	MAX	UNIT	
t_{pHL}	Propagation delay time (high-to-low output)	A-to-B	Push-pull driving	$V_{CCB} = 2.5\text{ V} \pm 0.2\text{ V}$	3.2		ns
				$V_{CCB} = 3.3\text{ V} \pm 0.3\text{ V}$	3.3		
				$V_{CCB} = 5\text{ V} \pm 0.5\text{ V}$	3.4		
		Open-drain driving	$V_{CCB} = 2.5\text{ V} \pm 0.2\text{ V}$	1.7	6.3		
			$V_{CCB} = 3.3\text{ V} \pm 0.3\text{ V}$	2	6		
			$V_{CCB} = 5\text{ V} \pm 0.5\text{ V}$	2.1	5.8		
t_{pLH}	Propagation delay time (low-to-high output)	A-to-B	Push-pull driving	$V_{CCB} = 2.5\text{ V} \pm 0.2\text{ V}$	3.5		ns
				$V_{CCB} = 3.3\text{ V} \pm 0.3\text{ V}$	4.1		
				$V_{CCB} = 5\text{ V} \pm 0.5\text{ V}$	4.4		
		Open-drain driving	$V_{CCB} = 2.5\text{ V} \pm 0.2\text{ V}$	43	250		
			$V_{CCB} = 3.3\text{ V} \pm 0.3\text{ V}$	36	206		
			$V_{CCB} = 5\text{ V} \pm 0.5\text{ V}$	27	190		
t_{pHL}	Propagation delay time (high-to-low output)	B-to-A	Push-pull driving	$V_{CCB} = 2.5\text{ V} \pm 0.2\text{ V}$	3		ns
				$V_{CCB} = 3.3\text{ V} \pm 0.3\text{ V}$	3.6		
				$V_{CCB} = 5\text{ V} \pm 0.5\text{ V}$	4.3		
		Open-drain driving	$V_{CCB} = 2.5\text{ V} \pm 0.2\text{ V}$	1.8	4.7		
			$V_{CCB} = 3.3\text{ V} \pm 0.3\text{ V}$	2.6	4.2		
			$V_{CCB} = 5\text{ V} \pm 0.5\text{ V}$	1.2	4.0		

over recommended operating free-air temperature range, $V_{CCA} = 2.5\text{ V} \pm 0.2\text{ V}$ (unless otherwise noted)

PARAMETER		TEST CONDITIONS		MIN	MAX	UNIT	
t_{PLH}	Propagation delay time (low-to-high output)	B-to-A	Push-pull driving	$V_{CCB} = 2.5\text{ V} \pm 0.2\text{ V}$	2.5		
				$V_{CCB} = 3.3\text{ V} \pm 0.3\text{ V}$	1.8		
				$V_{CCB} = 5\text{ V} \pm 0.5\text{ V}$	1.5		
			Open-drain driving	$V_{CCB} = 2.5\text{ V} \pm 0.2\text{ V}$	44	170	
				$V_{CCB} = 3.3\text{ V} \pm 0.3\text{ V}$	37	140	
				$V_{CCB} = 5\text{ V} \pm 0.5\text{ V}$	27	103	
t_{en}	Enable time	OE-to-A or B	$V_{CCB} = 2.5\text{ V} \pm 0.2\text{ V}$	36		ns	
			$V_{CCB} = 3.3\text{ V} \pm 0.3\text{ V}$	41			
			$V_{CCB} = 5\text{ V} \pm 0.5\text{ V}$	43			
t_{dis}	Disable time	OE-to-A or B	$V_{CCB} = 2.5\text{ V} \pm 0.2\text{ V}$	77		ns	
			$V_{CCB} = 3.3\text{ V} \pm 0.3\text{ V}$	68			
			$V_{CCB} = 5\text{ V} \pm 0.5\text{ V}$	63			
t_{rA}	Input rise time	A-port rise time	Push-pull driving	$V_{CCB} = 2.5\text{ V} \pm 0.2\text{ V}$	2.8	7.4	ns
				$V_{CCB} = 3.3\text{ V} \pm 0.3\text{ V}$	2.6	6.6	
				$V_{CCB} = 5\text{ V} \pm 0.5\text{ V}$	1.8	5.6	
			Open-drain driving	$V_{CCB} = 2.5\text{ V} \pm 0.2\text{ V}$	34	149	
				$V_{CCB} = 3.3\text{ V} \pm 0.3\text{ V}$	31	121	
				$V_{CCB} = 5\text{ V} \pm 0.5\text{ V}$	24	89	
t_{rB}	Input rise time	B-port rise time	Push-pull driving	$V_{CCB} = 2.5\text{ V} \pm 0.2\text{ V}$	3.2	8.3	ns
				$V_{CCB} = 3.3\text{ V} \pm 0.3\text{ V}$	2.9	7.2	
				$V_{CCB} = 5\text{ V} \pm 0.5\text{ V}$	2.6	6.2	
			Open-drain driving	$V_{CCB} = 2.5\text{ V} \pm 0.2\text{ V}$	35	151	
				$V_{CCB} = 3.3\text{ V} \pm 0.3\text{ V}$	31	112	
				$V_{CCB} = 5\text{ V} \pm 0.5\text{ V}$	16.5	64	
t_{fA}	Input fall time	A-port fall time	Push-pull driving	$V_{CCB} = 2.5\text{ V} \pm 0.2\text{ V}$	1.9	5.7	ns
				$V_{CCB} = 3.3\text{ V} \pm 0.3\text{ V}$	1.9	5.5	
				$V_{CCB} = 5\text{ V} \pm 0.5\text{ V}$	1.8	5.3	
			Open-drain driving	$V_{CCB} = 2.5\text{ V} \pm 0.2\text{ V}$	4.4	6.9	
				$V_{CCB} = 3.3\text{ V} \pm 0.3\text{ V}$	4.3	6.2	
				$V_{CCB} = 5\text{ V} \pm 0.5\text{ V}$	4.2	5.8	
t_{fB}	Input fall time	B-port fall time	Push-pull driving	$V_{CCB} = 2.5\text{ V} \pm 0.2\text{ V}$	2.2	7.8	ns
				$V_{CCB} = 3.3\text{ V} \pm 0.3\text{ V}$	2.4	6.7	
				$V_{CCB} = 5\text{ V} \pm 0.5\text{ V}$	2.6	6.6	
			Open-drain driving	$V_{CCB} = 2.5\text{ V} \pm 0.2\text{ V}$	5.1	8.8	
				$V_{CCB} = 3.3\text{ V} \pm 0.3\text{ V}$	5.4	9.4	
				$V_{CCB} = 5\text{ V} \pm 0.5\text{ V}$	5.4	11.2	
$t_{SK(O)}$	Skew (time), output	Channel-to-channel skew	$V_{CCB} = 2.5\text{ V} \pm 0.2\text{ V}$	1		ns	
			$V_{CCB} = 3.3\text{ V} \pm 0.3\text{ V}$	1			
			$V_{CCB} = 5\text{ V} \pm 0.5\text{ V}$	1			

over recommended operating free-air temperature range, $V_{CCA} = 2.5 \text{ V} \pm 0.2 \text{ V}$ (unless otherwise noted)

PARAMETER		TEST CONDITIONS		MIN	MAX	UNIT
Maximum data rate		Push-pull driving	$V_{CCB} = 2.5 \text{ V} \pm 0.2 \text{ V}$	24		Mbps
			$V_{CCB} = 3.3 \text{ V} \pm 0.3 \text{ V}$	24		
			$V_{CCB} = 5 \text{ V} \pm 0.5 \text{ V}$	24		
		Open-drain driving	$V_{CCB} = 2.5 \text{ V} \pm 0.2 \text{ V}$	2		
			$V_{CCB} = 3.3 \text{ V} \pm 0.3 \text{ V}$	2		
			$V_{CCB} = 5 \text{ V} \pm 0.5 \text{ V}$	2		

6.8 Switching Characteristics: $V_{CCA}=3.3\text{V}\pm 0.3\text{V}$

 over recommended operating free-air temperature range, $V_{CCA} = 3.3 \text{ V} \pm 0.3 \text{ V}$ (unless otherwise noted)

PARAMETER		TEST CONDITIONS		MIN	MAX	UNIT	
t_{PHL}	Propagation delay time (high-to-low output)	A-to-B	Push-pull driving	$V_{CCB} = 3.3 \text{ V} \pm 0.3 \text{ V}$	2.4		ns
				$V_{CCB} = 5 \text{ V} \pm 0.5 \text{ V}$	3.1		
			Open-drain driving	$V_{CCB} = 3.3 \text{ V} \pm 0.3 \text{ V}$	1.3	4.2	
				$V_{CCB} = 5 \text{ V} \pm 0.5 \text{ V}$	1.7	4.6	
t_{PLH}	Propagation delay time (low-to-high output)	A-to-B	Push-pull driving	$V_{CCB} = 3.3 \text{ V} \pm 0.3 \text{ V}$	4.2		
				$V_{CCB} = 5 \text{ V} \pm 0.5 \text{ V}$	4.4		
			Open-drain driving	$V_{CCB} = 3.3 \text{ V} \pm 0.3 \text{ V}$	40	204	
				$V_{CCB} = 5 \text{ V} \pm 0.5 \text{ V}$	34	165	
t_{PHL}	Propagation delay time (high-to-low output)	B-to-A	Push-pull driving	$V_{CCB} = 3.3 \text{ V} \pm 0.3 \text{ V}$	2.5		ns
				$V_{CCB} = 5 \text{ V} \pm 0.5 \text{ V}$	3.3		
			Open-drain driving	$V_{CCB} = 3.3 \text{ V} \pm 0.3 \text{ V}$	1	124	
				$V_{CCB} = 5 \text{ V} \pm 0.5 \text{ V}$	1	97	
t_{PLH}	Propagation delay time (low-to-high output)	B-to-A	Push-pull driving	$V_{CCB} = 3.3 \text{ V} \pm 0.3 \text{ V}$	2.5		
				$V_{CCB} = 5 \text{ V} \pm 0.5 \text{ V}$	2.6		
			Open-drain driving	$V_{CCB} = 3.3 \text{ V} \pm 0.3 \text{ V}$	3	139	
				$V_{CCB} = 5 \text{ V} \pm 0.5 \text{ V}$	3	105	
t_{en}	Enable time	OE-to-A or B	$V_{CCB} = 3.3 \text{ V} \pm 0.3 \text{ V}$	41		ns	
			$V_{CCB} = 5 \text{ V} \pm 0.5 \text{ V}$	43			
t_{dis}	Disable time	OE-to-A or B	$V_{CCB} = 3.3 \text{ V} \pm 0.3 \text{ V}$	68		ns	
			$V_{CCB} = 5 \text{ V} \pm 0.5 \text{ V}$	63			
t_{rA}	Input rise time	A-port rise time	Push-pull driving	$V_{CCB} = 3.3 \text{ V} \pm 0.3 \text{ V}$	2.3	5.6	ns
				$V_{CCB} = 5 \text{ V} \pm 0.5 \text{ V}$	1.9	4.8	
			Open-drain driving	$V_{CCB} = 3.3 \text{ V} \pm 0.3 \text{ V}$	25	116	
				$V_{CCB} = 5 \text{ V} \pm 0.5 \text{ V}$	19	85	
t_{rB}	Input rise time	B-port rise time	Push-pull driving	$V_{CCB} = 3.3 \text{ V} \pm 0.3 \text{ V}$	2.5	6.4	ns
				$V_{CCB} = 5 \text{ V} \pm 0.5 \text{ V}$	2.1	7.4	
			Open-drain driving	$V_{CCB} = 3.3 \text{ V} \pm 0.3 \text{ V}$	25	116	
				$V_{CCB} = 5 \text{ V} \pm 0.5 \text{ V}$	26	116	
t_{fA}	Input fall time	A-port fall time	Push-pull driving	$V_{CCB} = 3.3 \text{ V} \pm 0.3 \text{ V}$	2	5.4	ns
				$V_{CCB} = 5 \text{ V} \pm 0.5 \text{ V}$	1.9	5.0	
			Open-drain driving	$V_{CCB} = 3.3 \text{ V} \pm 0.3 \text{ V}$	4.3	6.1	
				$V_{CCB} = 5 \text{ V} \pm 0.5 \text{ V}$	4.2	5.7	

over recommended operating free-air temperature range, $V_{CCA} = 3.3 \text{ V} \pm 0.3 \text{ V}$ (unless otherwise noted)

PARAMETER		TEST CONDITIONS		MIN	MAX	UNIT	
t_{FB}	Input fall time	B-port fall time	Push-pull driving	$V_{CCB} = 3.3 \text{ V} \pm 0.3 \text{ V}$	2.3	7.4	ns
				$V_{CCB} = 5 \text{ V} \pm 0.5 \text{ V}$	2.4	7.6	
			Open-drain driving	$V_{CCB} = 3.3 \text{ V} \pm 0.3 \text{ V}$	5	7.6	
				$V_{CCB} = 5 \text{ V} \pm 0.5 \text{ V}$	4.8	8.3	
$t_{SK(O)}$ Skew (time), output		Channel-to-channel skew		$V_{CCB} = 3.3 \text{ V} \pm 0.3 \text{ V}$	1		ns
				$V_{CCB} = 5 \text{ V} \pm 0.5 \text{ V}$	1		
Maximum data rate			Push-pull driving	$V_{CCB} = 3.3 \text{ V} \pm 0.3 \text{ V}$	24		Mbps
				$V_{CCB} = 5 \text{ V} \pm 0.5 \text{ V}$	24		
			Open-drain driving	$V_{CCB} = 3.3 \text{ V} \pm 0.3 \text{ V}$	2		
				$V_{CCB} = 5 \text{ V} \pm 0.5 \text{ V}$	2		

6.9 Switching Characteristics: $V_{CCA} = 5\text{V} \pm 0.5 \text{ V}$

 over recommended operating free-air temperature range, $V_{CCA} = 5 \text{ V} \pm 0.5 \text{ V}$ (unless otherwise noted)

PARAMETER		TEST CONDITIONS		MIN	MAX	UNIT	
t_{PHL}	Propagation delay time (high-to-low output)		Push-pull driving	$V_{CCB} = 5 \text{ V} \pm 0.5 \text{ V}$	5.6		ns
			Open-drain driving	$V_{CCB} = 5 \text{ V} \pm 0.5 \text{ V}$	1.6	4.6	
t_{PLH}	Propagation delay time (low-to-high output)		Push-pull driving	$V_{CCB} = 5 \text{ V} \pm 0.5 \text{ V}$	2.0		
			Open-drain driving	$V_{CCB} = 5 \text{ V} \pm 0.5 \text{ V}$	24	155	
t_{en}	Enable time	OE-to-A or B		$V_{CCB} = 5 \text{ V} \pm 0.5 \text{ V}$	43		ns
t_{dis}	Disable time	OE-to-A or B		$V_{CCB} = 5 \text{ V} \pm 0.5 \text{ V}$	63		ns
t_r	Input rise time		Push-pull driving	$V_{CCB} = 5 \text{ V} \pm 0.5 \text{ V}$	2.7	5.0	ns
			Open-drain driving	$V_{CCB} = 5 \text{ V} \pm 0.5 \text{ V}$	19	50	
t_f	Input fall time		Push-pull driving	$V_{CCB} = 5 \text{ V} \pm 0.5 \text{ V}$	1.2	3.0	ns
			Open-drain driving	$V_{CCB} = 5 \text{ V} \pm 0.5 \text{ V}$	1.8	3.0	
$t_{SK(O)}$ Skew (time), output		Channel-to-channel skew		$V_{CCB} = 5 \text{ V} \pm 0.5 \text{ V}$	1		ns
Maximum data rate			Push-pull driving	$V_{CCB} = 5 \text{ V} \pm 0.5 \text{ V}$	24		Mbps
			Open-drain driving	$V_{CCB} = 5 \text{ V} \pm 0.5 \text{ V}$	2		

7. Parameter Measurement Information

7.1 Load Circuits

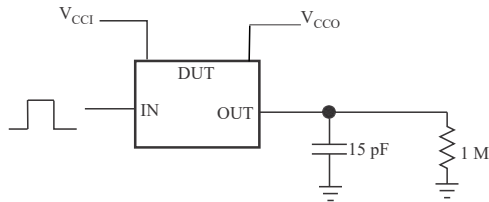


Figure 7-1. Data Rate, Pulse Duration, Propagation Delay, Output Rise-Time and Fall-Time Measurement Using a Push-Pull Driver

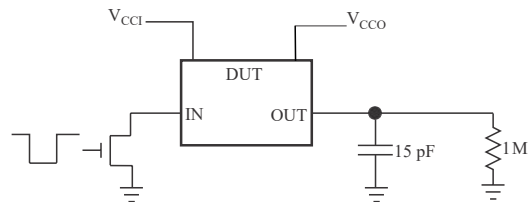
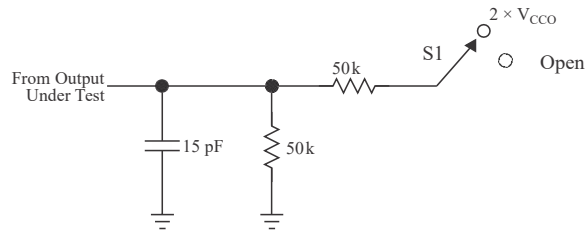


Figure 7-2. Data Rate, Pulse Duration, Propagation Delay, Output Rise-Time and Fall-Time Measurement Using an Open-Drain Driver



TEST	S1
t_{PZL} / t_{PLZ} (t_{dis})	$2 \times V_{CCO}$
t_{PHZ} / t_{PZH} (t_{en})	Open

Figure 7-3. Load Circuit for Enable-Time and Disable-Time Measurement

1. t_{PLZ} and t_{PHZ} are the same as t_{dis} .
2. t_{PZL} and t_{PZH} are the same as t_{en} .
3. V_{CCI} is the V_{CC} associated with the input port.
4. V_{CCO} is the V_{CC} associated with the output port.

7.2 Voltage Waveforms

The outputs are measured one at a time, with one transition per measurement. All input pulses are supplied by generators that have the following characteristics:

- $PRR \leq 10 \text{ MHz}$
- $Z_0 = 50 \Omega$
- $dv/dt \geq 1 \text{ V/ns}$

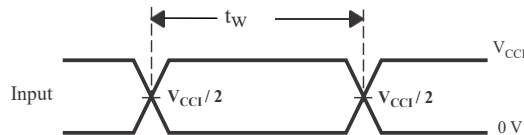


Figure 7-4. Pulse Duration

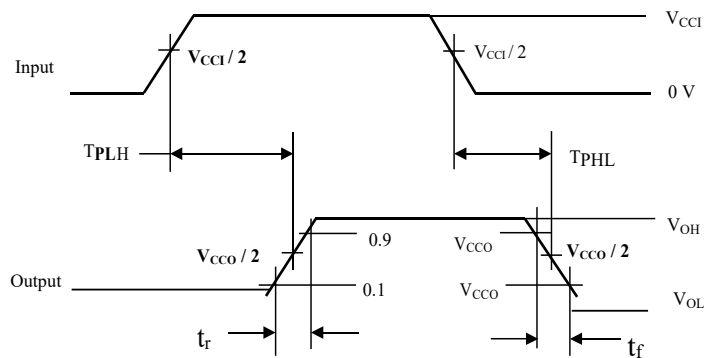
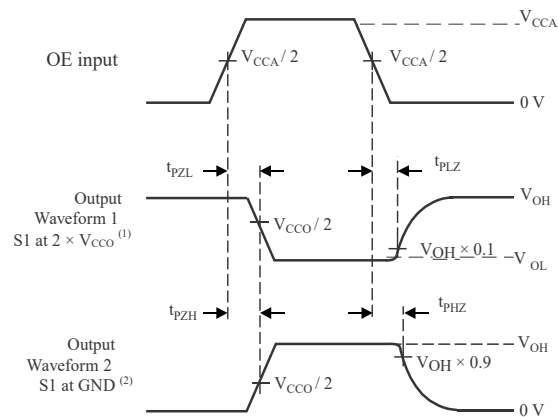


Figure 7-5. Voltage Waveforms Propagation Delay Times

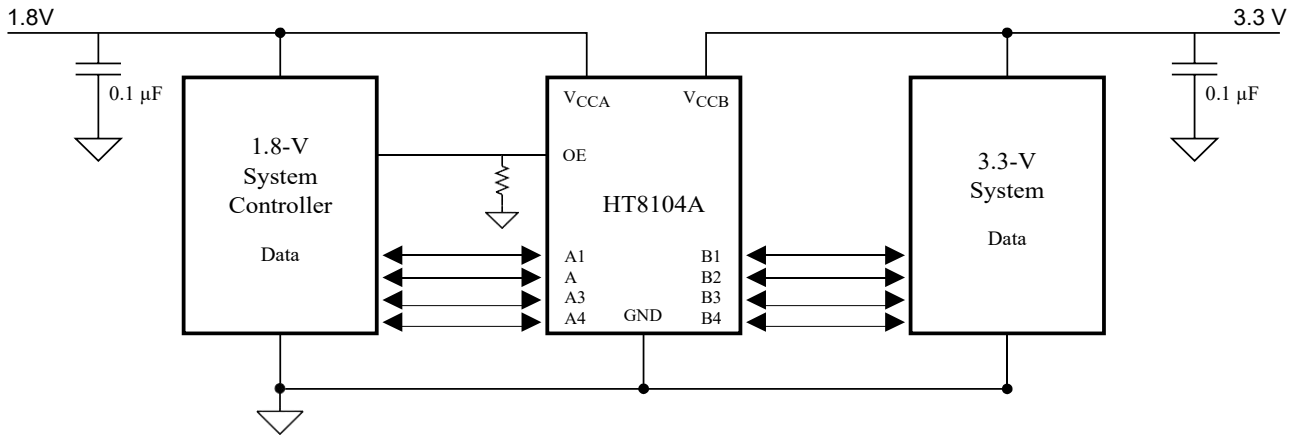


- A. Waveform 1 is for an output with internal such that the output is high, except when OE is high (see Figure 7-3).
 B. Waveform 2 is for an output with conditions such that the output is low, except when OE is high.

Figure 7-6. Enable and Disable Times

8. Application Information

The HT8104A device can be used to bridge the digital-switching compatibility gap between two voltage nodes to successfully interface logic threshold levels found in electronic systems. It should be used in a point-to-point topology for interfacing devices or systems operating at different interface voltages with one another. Its primary target application use is for interfacing with open-drain drivers on the data I/Os such as I2C , where the data is bidirectional and no control signal is available. The device can also be used in applications where a push-pull driver is connected to the data I/Os.



9. Feature Description

9.1 Architecture

The HT8104A architecture (see Figure 8) is an auto-direction-sensing based translator that does not require a direction-control signal to control the direction of data flow from A to B or from B to A. These two bidirectional channels independently determine the direction of data flow without a direction-control signal. Each I/O pin can be automatically reconfigured as either an input or an output, which is how this auto-direction feature is realized.

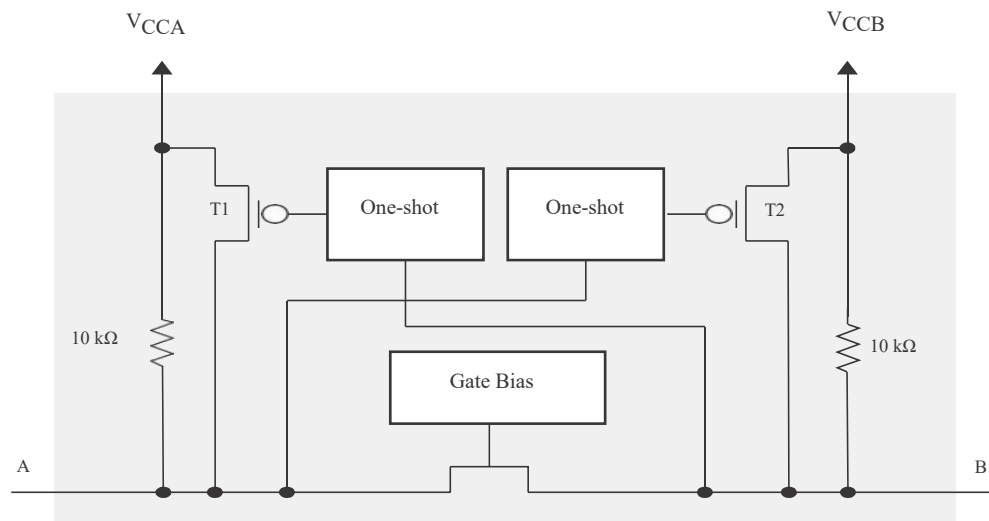


Figure 8-1. Architecture of a HT8104A Cell

9.2 Power Up

During operation, ensure that $V_{CCA} \leq V_{CCB}$ at all times. During power-up sequencing, $V_{CCA} \geq V_{CCB}$ does not damage the device, so any power supply can be ramped up first.

9.3 Enable and Disable

The HT8104A device has an OE input that disables the device by setting OE low, which places all I/Os in the high-impedance state. The disable time (t_{dis}) indicates the delay between the time when the OE pin goes low and when the outputs actually enter the high-impedance state. The enable time (t_{en}) indicates the amount of time the user must allow for the one-shot circuitry to become operational after the OE pin is taken high.

9.4 Pullup and Pulldown Resistors on I/O Lines

Each A-port I/O has an internal 10-kΩ pullup resistor to V_{CCA} , and each B-port I/O has an internal 10-kΩ pullup resistor to V_{CCB} . If a smaller value of pullup resistor is required, an external resistor must be added from the I/O to V_{CCA} or V_{CCB} (in parallel with the internal 10-kΩ resistors).

9.5 Output Load Considerations

We recommend careful PCB layout practices with short PCB trace lengths to avoid excessive capacitive loading and to ensure that proper O.S. triggering takes place. PCB signal trace-lengths should be kept short enough such that the round-trip delay of any reflection is less than the one-shot duration. This improves signal integrity by ensuring that any reflection sees a low impedance at the driver. The O.S. circuits have been designed to stay on for approximately 30 ns. The maximum capacitance of the lumped load that can be driven also depends directly on the one-shot duration. With very heavy capacitive loads, the one-shot can time-out before the signal is driven fully to the positive rail. The O.S. duration has been set to best optimize trade-offs between dynamic ICC, load driving capability, and maximum bit-rate considerations. Both PCB trace length and connectors add to the capacitance that the HT8104A device output sees, so it is recommended that this lumped-load capacitance be considered to avoid O.S. retriggering, bus contention, output signal oscillations, or other adverse system level affects.

9.6 Input Driver Requirements

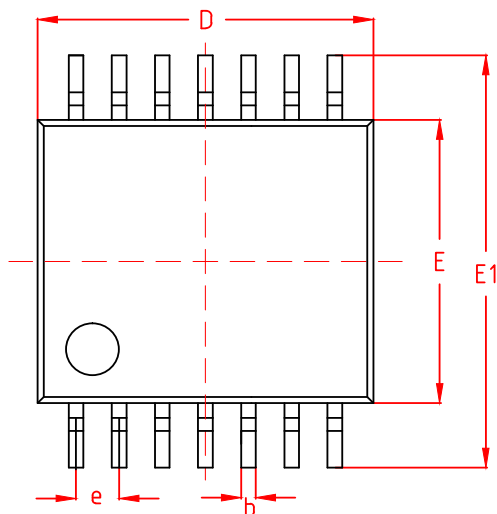
The fall time (t_{fA} , t_{fB}) of a signal depends on the output impedance of the external device driving the data I/Os of the HT8104A device. Similarly, the t_{pHL} and maximum data rates also depend on the output impedance of the external driver. The values for t_{fA} , t_{fB} , t_{pHL} , and maximum data rates in the data sheet assume that the output impedance of the external driver is less than 50 Ω .

PACKAGE OUTLINE DIMENSIONS

TSSOP14

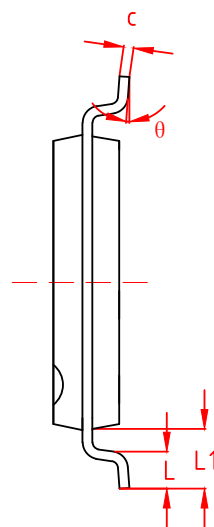
TOP VIEW

正视图



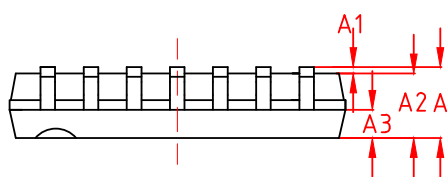
SIDE VIEW

侧视图



SIDE VIEW

侧视图



机械尺寸/mm Dimensions			
字符 SYMBOL	最小值 MIN	典型值 NOMINAL	最大值 MAX
A	-	-	1.20
A1	0.05	-	0.15
A2	0.90	1.00	1.05
A3	0.39	0.44	0.49
b	0.20	-	0.28
c	0.13	-	0.17
D	4.90	5.00	5.10
E	4.30	4.40	4.50
E1	6.20	6.40	6.60
e	0.65 BSC		
L1	1.00REF		
L	0.45	0.60	0.75
θ	0°	-	8°

免责声明核心条款

本规格书所载信息由[深圳市海天芯微电子有限公司]（以下简称“海天芯”）提供，仅作为技术参考文档使用。本公司不对规格书中任何数据的准确性、完整性或适用性作出明示或暗示的保证，包括但不限于：

1.更新与终止：本公司保留随时修改、补充或终止本规格书的权利，恕不另行通知。

2.设计参数、性能指标及测试结果可能因实际应用环境、制造工艺或第三方组件差异而发生变化。

3.文档中引用的第三方技术或专利信息可能存在更新滞后，建议用户自行核实最新状态。

4.规格书不构成对产品功能、可靠性或安全性的承诺，实际表现需经用户独立验证。

5.因使用本规格书信息导致的直接、间接、特殊或衍生性损失（包括但不限于利润损失、生产中断或数据损坏）。

6.用户基于未经验证的设计参数实施工程决策所产生的后果。

7.第三方知识产权侵权索赔，除非该侵权由本公司故意行为直接导致。

8.在应用本规格书前，自行评估设计可行性并承担全部技术风险。

9.不将文档内容用于未经授权的商业目的或侵犯第三方权益。

10.发现信息矛盾或缺陷时，立即停止使用并通知本公司。