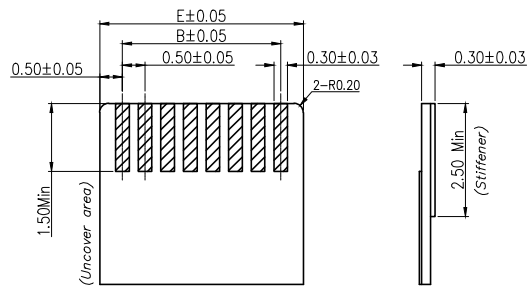
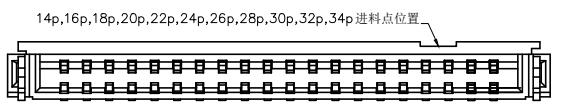
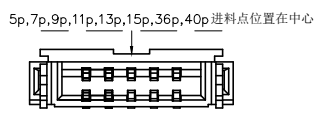
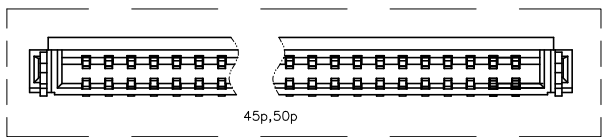


Recommended PCB mounting pattern and metal mask dimensions
Recommended metal mask thickness: t=0.1



Recommended FPC/FFC Dimensions



标记 MARK	ECN编号/变更内容 ECN NO/DEFINITION	修改 REVISE	日期 DATE		核准 APPROVE			
			DATE	DATE	APPROVE	APPROVE		
		Long covre type	Number of Contacts	DIM A	DIM B	DIM C	DIM D	DIM E
			50	27.00	24.50	25.57	26.39	25.50
			45	24.50	22.00	23.07	23.89	23.00
			40	22.00	19.50	20.57	21.39	20.50
			36	20.00	17.50	18.57	19.39	18.50
			34	19.00	16.50	17.57	18.39	17.50
			32	18.00	15.50	16.57	17.39	16.50
			30	17.00	14.50	15.57	16.39	15.50
			28	16.00	13.50	14.57	15.39	14.50
			26	15.00	12.50	13.57	14.39	13.50
			24	14.00	11.50	12.57	13.39	12.50
			22	13.00	10.50	11.57	12.39	11.50
			20	12.00	9.50	10.57	11.39	10.50
			18	11.00	8.50	9.57	10.39	9.50
			16	10.00	7.50	8.57	9.39	8.50
			15	9.50	7.00	8.07	8.89	8.00
			14	9.00	6.50	7.57	8.39	7.50
			13	8.50	6.00	7.07	7.89	7.00
			12	8.00	5.50	6.57	7.39	6.50
			11	7.50	5.00	6.07	6.89	6.00
		10	7.00	4.50	5.57	6.39	5.50	
		9	6.5	4.00	5.07	5.89	5.00	
		8	6.00	3.50	4.57	5.39	4.50	
		7	5.5	3.00	4.07	4.89	4.00	
		6	5.00	2.50	3.57	4.39	3.50	
		5	4.5	2.00	3.07	3.89	3.00	
		4	4.00	1.50	2.57	3.39	2.50	

NOTE:
1. MATERIAL:
HOUSING:LCP, COLOR: NATURAL.
CONTACTS: COPPER ALLOY,Au0,025 um MIN, Ni 1,0 um MIN
PEG: COPPER ALLOY.Sn 2,0 um MIN.Ni 1,0 um MIN
ACTUATOR:LCP OR PA . COLOR:BLACK
2. RATING:
OPERATING VOLTAGE: 50Vrms AC.
CURRENT RATING: 0.5A.
OPERATING TEMPERATURE: 55°C~+85°C.
OPERATING HUMIDITY RANGE: RELATIVE HUMIDITY 90% MAX.(NO CONDENSATION)
STORAGE TEMPERATURE RANGE: -10°C~+50°C.
STORAGE HUMIDITY RANGE: RELATIVE HUMIDITY 90% MAX.(NO CONDENSATION)

2	端子	铜	点镀金	
1	基座	LCP	本色	
序号	品名	材质	电镀/颜色	备注

深圳市虹成电子有限公司

品名 TITLE: FPC座
料号 PART NO: HC-FPC-0.5-16P-FHH10

GENERAL TOLERANCES (UNLESS SPECIFIED)
X.X : ±0.30 X.X' : ±5'
X.XX : ±0.20 X.XX' : ±2'

比列 SCALE: 1:1
单位 UNIT: MM
张数 PART NO: 1 OF 1
版本 REV: A

制图 DRAW: AhYe
审核 CHECKED: 夏操云
批准 APPROVE: 赵亮亮