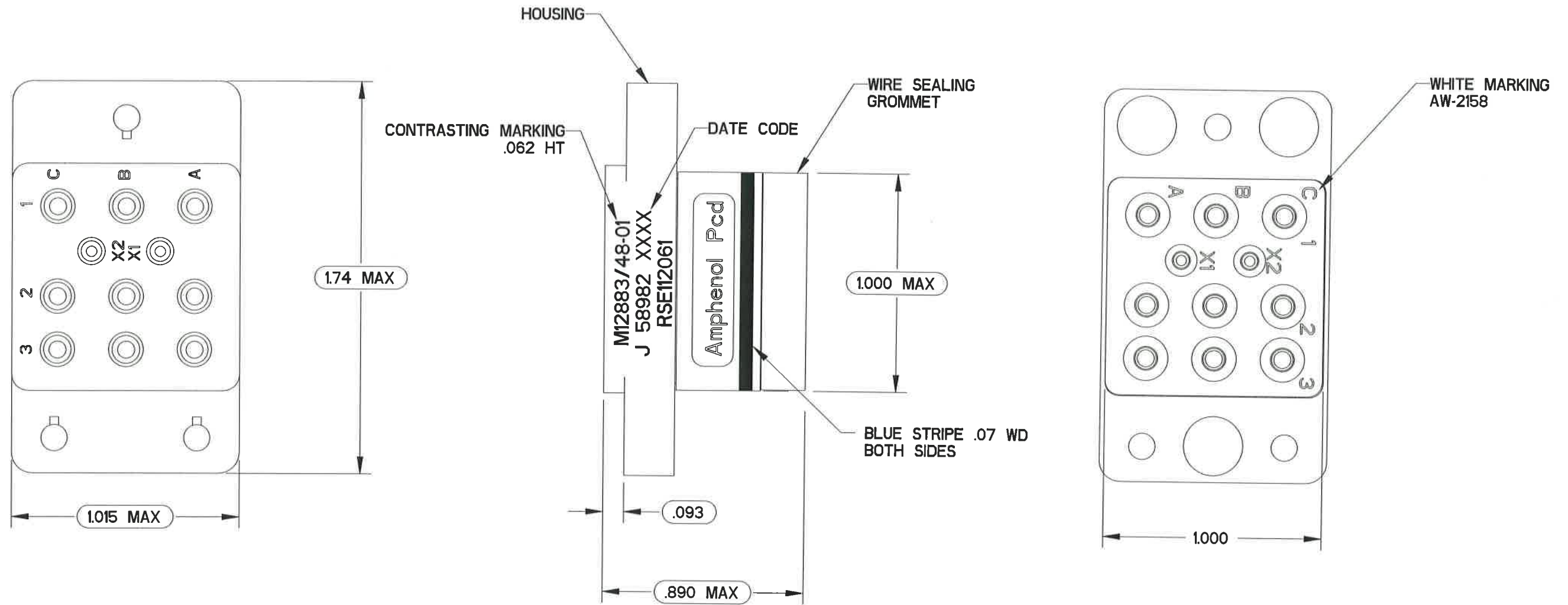


RSE112060

REV	ECN	DESCRIPTION	APP'D
H	6275	REDRAW; UPDATE DESIGN	JH 2-5-09
J	7350	REDRAW; UPDATE SUBASSEMBLY P/N	<i>[Signature]</i> 11/20/14



RSE112060

RSE112060

SUBASSEMBLY P/N	RELAY SOCKET P/N		SUPPLIED CONTACTS				MARKING
	MILITARY	APCD	SIZE	MIL P/N	APCD P/N	QTY	
700112061-IN	M12883/48-01	RSE112060	CONTACTS NOT SUPPLIED				M12883/48-01 J 58982 XXXX RSE112061
		RSE112061	12/12	M39029/92-535	CNS128900	9	
			16/16	M39029/92-533	CNS126900	2	

HARDWARE PACKAGE		
P/N	DESCRIPTION	QTY
200002951	*10 FLAT WASHER; STEEL, CAD PLATE	3
200002501	.190-32 UNF-2B HEX LOCK NUT; STEEL, CAD PLATE	3
200007901	LOOSE STUD; CRES, PASSIVATE	3
200003801	.112-40 UNC-2B HEX LOCK NUT; STEEL, CAD PLATE	6
200000401	*4 FLAT WASHER; STEEL, CAD PLATE	6

<b>DIMENSIONS</b> ANSI Y14.5M UNITS: INCHES Pro/E FILE	<b>TOLERANCES</b> .XX ±0.01 .XXX ±0.005 ANGLES ±2.0°	<b>PROJECTION</b> 	<b>Amphenol Pcd</b> ENGR J.PHAN 22-Sept-14 CHKD <i>[Signature]</i> 11/18/14 APPD <i>[Signature]</i> 11/20/14	<b>TITLE</b> RELAY SOCKET SIZE 12&16, 25-AMP LOOSE STUD
<b>ORIGINAL</b> <i>[Red Star]</i> NOT FOR CUSTOMER DISTRIBUTION	THIS DOCUMENT CONTAINS PROPRIETARY INFORMATION WHICH IS THE CONFIDENTIAL PROPERTY OF AMPHENOL PCD INC., BEVERLY, MA		SIZE <b>B</b>	DWG NO. <b>RSE112060</b>
		CODE: 58982	SCALE: 2:1	REV <b>J</b>
		SHEET 1 OF 1		