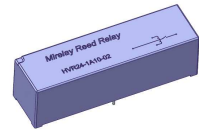


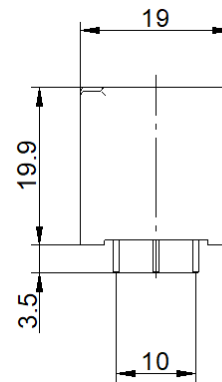
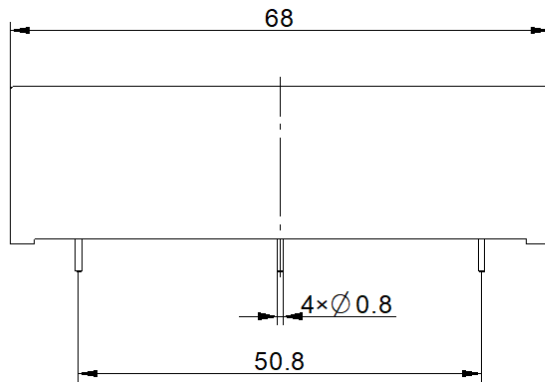
HVR24-1A10-02

- High Voltage Reed Relay
- Low Contact Resistance
- Breakdown up to 10 kVDC
- Excellent Lifetime Characteristics
- Custom Design Available

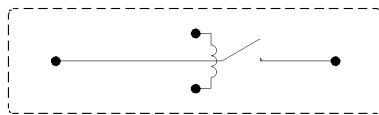


Outline Dimension

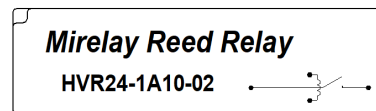
Unit: mm DIM Tolerance: ±0.3



Layout[Top View]



Marking



Coil Parameters (at 20°C)

Nominal Coil Voltage	Nominal Current	Coil Resistance	Max Pull-in Voltage	Min Drop-out Voltage
24 VDC	40 mA	600±10% Ω	18 VDC	2 VDC

Contact Parameters

Contact Form	1 Form A	Max Contact Rating	50 W
Max Switch Voltage	7.5 kVDC	Max Switch Current	3.0 A
Max Carrying Current	5.0 A	Min Breakdown Voltage	10 kVDC
Max Contact Resistance	150 mΩ	Life Expectancy (Electrical) (at 500 VDC 100mA)	5×10 ⁷ ops

Electrical Specifications

Dielectric Strength (Static,min)	Open contacts	10 kVDC	Insulation Resistance (min./typ.) Rh<45%, 100V Test Voltage	Open contacts	1×10 ¹² Ω
	Contact to coil	15 kVDC		Contact to coil	1×10 ¹² Ω
Operate Time,incl.Bounce	3.0 ms	Capacitance	Across Open Switch	1.0 pF	
Reset Time	1.5 ms				

Environmental data

Vibration (10 to 2KHz 1.5mm)	20 G	Shock (1/2 sine wave duration 11ms)	50 G
Operating Temperature	-20°C ~ 70°C	Storage Temperature	-35°C ~ 105°C
Soldering Temperature (5 sec. dwell)	260°C	Washability	fully sealed

Example of order marking

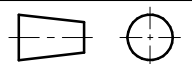
Product model	Nominal Coil Voltage	Contact form	Breakdown Voltage	Pin Out	Special code
HVR	24: 24 VDC	1A: 1 Form A	10: 10 kVDC	02	Nil

Remark:

RoHS

Make	Li Linmao
Checke	Hu Shu
Approved	Dong Hu
Date	23th,Dec,2024

TITLE	High Voltage Reed Relay
P/N	HVR24-1A10-02



Version: 04
Page: 1/1