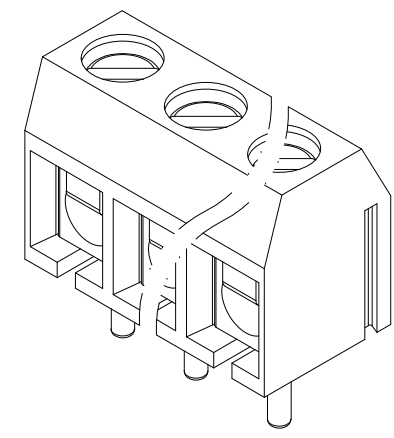
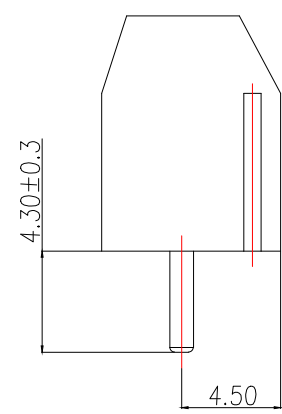
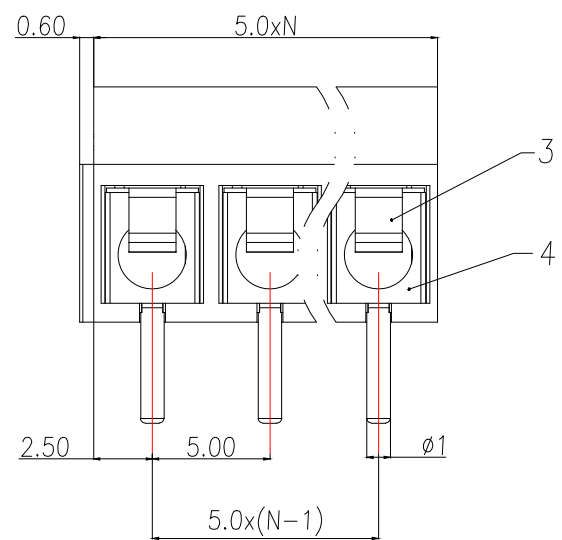
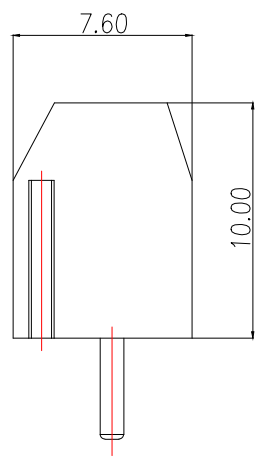
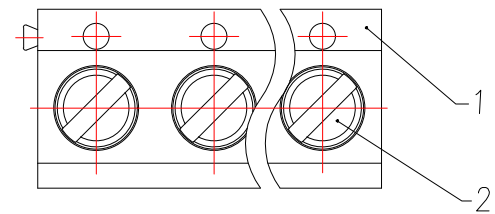


General tolerances(mm)

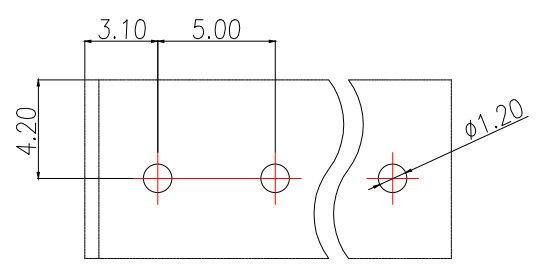
0 ~ 3	>3 ~ 6	>6 ~ 10	>10 ~ 18	>18 ~ 30	>30 ~ 50	>50 ~ 80	>80 ~ 120	>120 ~ 180	>180 ~ 250	>250 ~ 315	>315 ~ 400	>400 ~ 500	>500
±0.12	±0.18	±0.22	±0.26	±0.31	±0.37	±0.57	±0.80	±0.93	±1.05	±1.15	±1.60	±2.20	±2.50

0.1/10
±2°

UL Standard		B	C	D
Rated Voltage(V)/Current(A)		300/15	/	/
IEC Standard				
Overvoltage Category/Pollution Degree		Ⅲ/3	Ⅲ/2	Ⅱ/2
Rated Voltage(V)/Current(A)		/	250/17.5	/
Withstanding Voltage(V/1min)		/	AC2000	/
Torque Tightening(N·m/Lb.in)		M2.5, 0.29/2.6		
Wire Range(rigid and flexible)(mm ² /AWG)		22~14/0.75~1.5		
Pitch(mm)/Poles		5.0/N=02~22P		
Stripping length(mm)		6~7		
Operating temperature(°C)		-30~+120		
Conform to RoHS		Yes		



PCB LAYOUT



4	Pin header	Copper alloy	M2.5/Sn plated
3	Spring	Stainless stell	/
2	Screw	Steel	M2.5/Zn plated
1	Housing	PBT	UL94V-0
ITEM	NAME OF PART	MATERIAL	NOTES

制图 DRAWN	变更内容 DESCRIPTION	日期 DATE	GENERAL TOLERANCE

制图 DRAWING	EMMA
审核 CHECK	EVA
核准 APPROVAL	JADE
单位 UNITS	MM
比例 SCALE	1:1

料号 PART NO.	BX-DG01V-5.0-NP4	版本 REV.	A
品名 TITLE	DG301-5.0	页次 SHEET	1/1
客户料号 CUTM.NO.			

