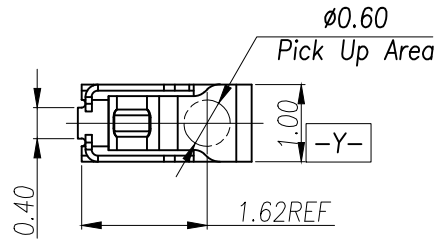


3D View



NOTES:

1:MATERIAL

1-1: SUS-301 THICKNE=0.08MM

2:SPECIFICATIONS

2-1: RATED CURRENT: 1.0A

2-2: VOLTAGE RATING: 1.5V

2-3: CONTACT RESISTANCE: 80mΩ/MAX

2-4: WELDING THRUST: >3KG

2-5: OPERATING TEMPERATURE: -40°C~+85°C

3:DURABILITY: 1500 CYCLES

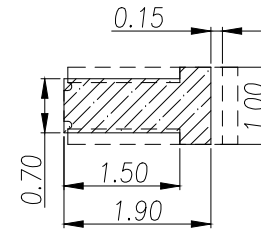
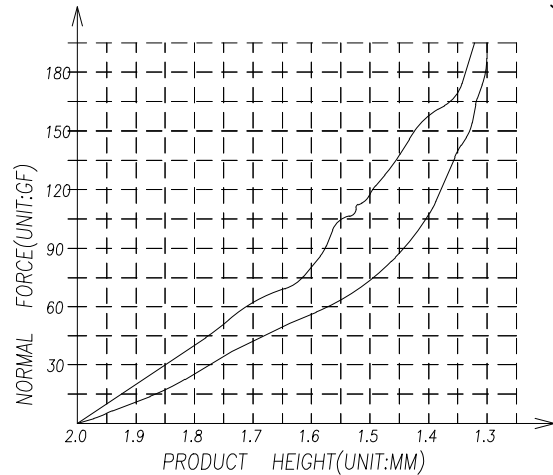
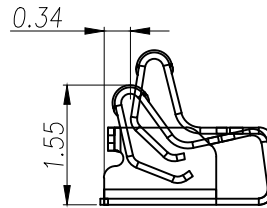
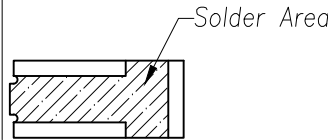
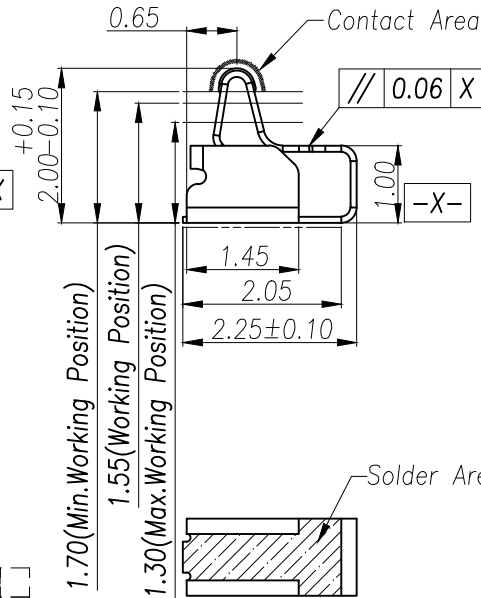
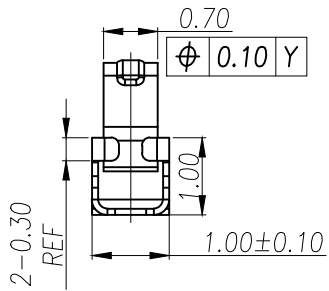
4:SALT SPRAY TIME: 24H

5:ELECTROPLATE: THE NICKEL-PLATED SUBSTRATE IS 50u" MIN

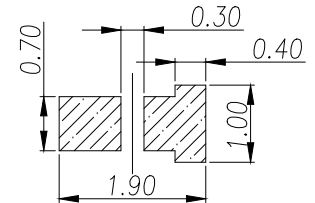
6:REQUIREMENTS

6-1:TERMINAL TO EAT FULL TIN,NOTPEELING, WELDING OBVIOUS COLOR AND OTHED ADVERSE

6-2:ROHS.REACH.HF HALOGER ADVERSE OF DOMESTIC AND INTERNATIONAL ENVIRONMNTAL REQUIREMENTS

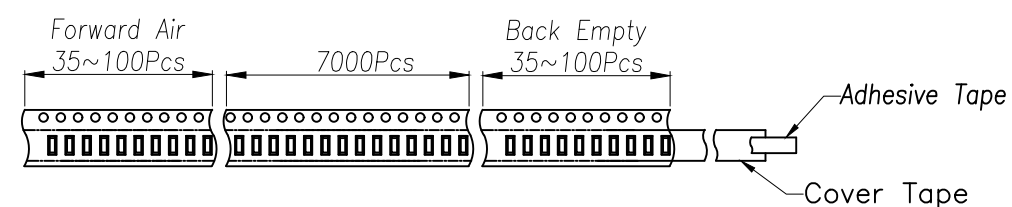
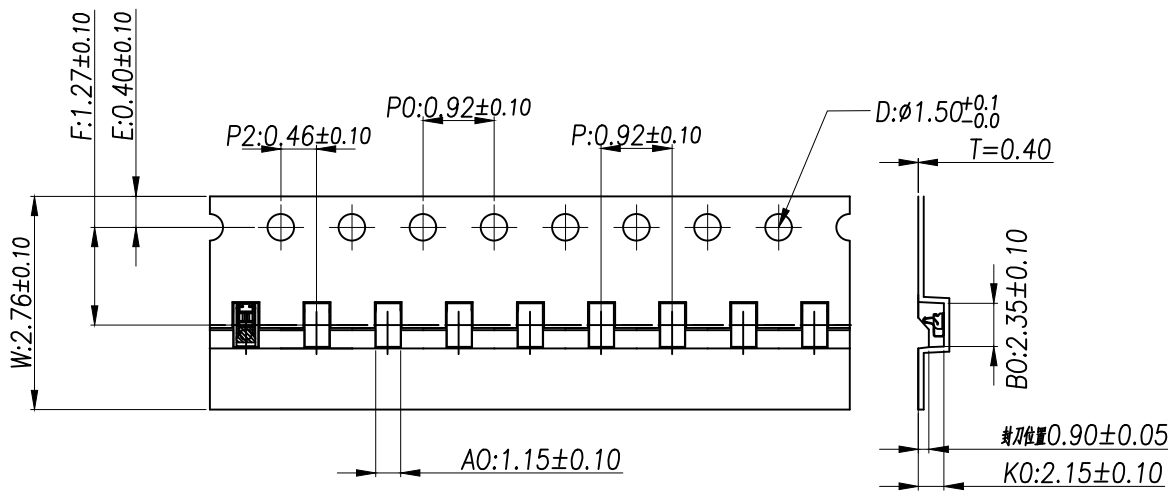


RECOMMENDED PCB LAYOUT
TOLERANCE:±0.05MM
(FOR REFERENCE ONLY)

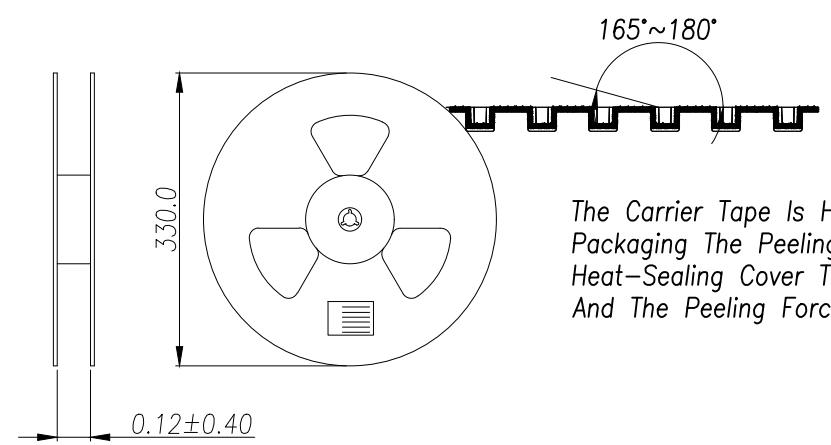


METAL MASK T=0.08
TOLERANCE:±0.05MM
(FOR REFERENCE ONLY)

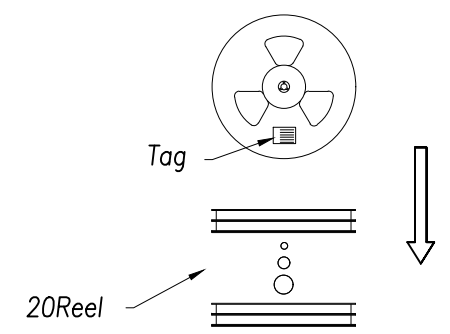
GENERAL TOLERANCES (UNLESS SOECIFIED)	SCALE: 1:1 UNIT: MM			
	DRAWN BY LUDAH			TITLE: 天线弹片 L2.25*W1.00*H2.00
DISTANCE ANGLE X. ±0.30 X.* ±2.0° .X ±0.20 .X* ±1.0° .XX ±0.15 .XX* ±0.5°	CHEVCKED BY /	PART NO. TP-T1-2021	SCALE N:A	SHEET 1:2
	DRAFT WHERE APPLICABLE APPROVED BY MUST REMAIN WITHIN DIMENSIONS	LUJIAH		



Customer To Use Direction Pull Out Direction (出料方向)

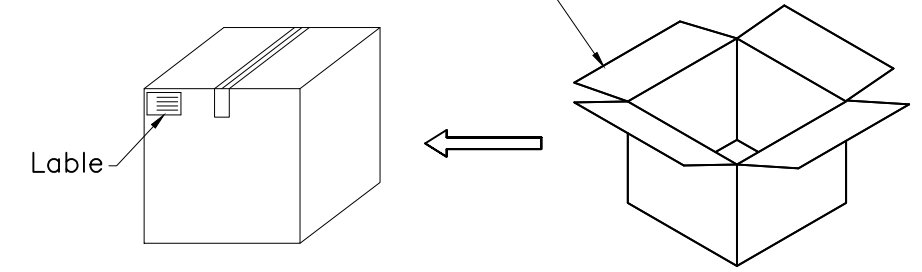


The Carrier Tape Is Heat-Sealed Packaging The Peeling Angle Of The Heat-Sealing Cover Tape Is 165°~180° And The Peeling Force Is 30~120g.



Carton Size 290*330*4 K3K

Carton Size 345*345*360 K=K



GENERAL TOLERANCES (UNLESS SOECIFIED)		SCALE: 1:1 UNIT: MM			
DISTANCE ANGLE		DRAWN BY			
X. ±0.30	X.* ±2.0°	LUDAH		L2.25*W1.00*H2.00	
.X ±0.20	.X* ±1.0°	CHECKED BY		MANUFACTURE DWG	
.XX ±0.15	.XX* ±0.5°	/			
DRAFT WHERE APPLICABLE APPROVED BY MUST REMAIN WITHIN DIMENSIONS		LUJIAH		PART NO. TP-T1-2021	
				SCALE N:A	
				SHEET 2:2	