

CONNECTORS

Operation: 立插式/全塑阻燃级主体 大电流 DC 电源连接器



ITEM NO.: DC-008 (Series)

(L8.5×W7.0×H10.5mm DC-CONNECTORS)

精密部品 NICETY

可靠 STABILIZE

適合環保 RoHS

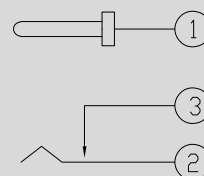


Technical parameter

PROJECT	LEVEL	A[better product]	B[average product]
	Contact Rating	3A, 24V DC	
Electrical	Initial Contact Resistance	50mΩ max.	
Properties	Insulation Resistance	100MΩ min.500V DC	Skey/PD: 100MΩ min.300V DC
	Withstand Voltage	500V AC for 1 minute	350 V AC for 1 minut
Durable Performance	There No Load	6,000 Cycles	5,000 Cycles
	Rated Load	5,000 Cycles	4,000 Cycles
	Storage temp.	-35℃~+75℃(Operating Temp:)	
	Operating Force	IF:35N MAX. (EF:10.0N MIN.)	
	Heat Rrsistance	IR Reflow:235℃, 5sec. Manual:350℃, 3sec.	

Material declaration		
No.	NAME	Description
① A	内芯针	H62 黄铜 Φ1.6/2[镀锡 50u" min]
② B	基座	PPA 热塑性塑胶[黑色]
③ C	动态端子	不锈钢 SUS-304 [t=0.25 镀银]
④ D	静态端子	磷铜 C2680/SPCC[镀锡 50u" min]
⑤ E	连接片	磷铜 C2680/SPCC[镀锡 50u" min]

CIRCUIT DIAGRAM



Unit:mm

