

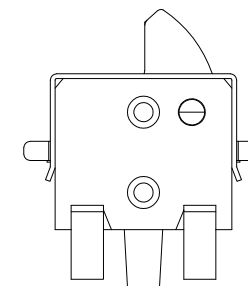
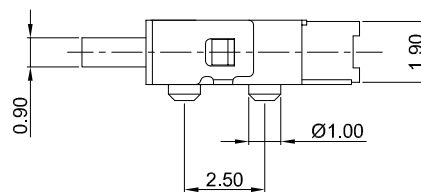
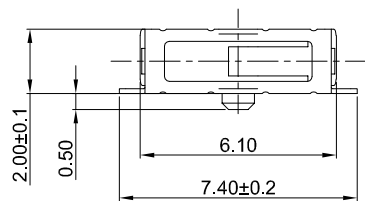
1

2

3

4

5



DS - S B009A-H0685-L03 A

Detector Switch

Installation
S=SMT

Structure
A=Right grip handle
B=Left grip handle

Operating Force
A=100gf Max

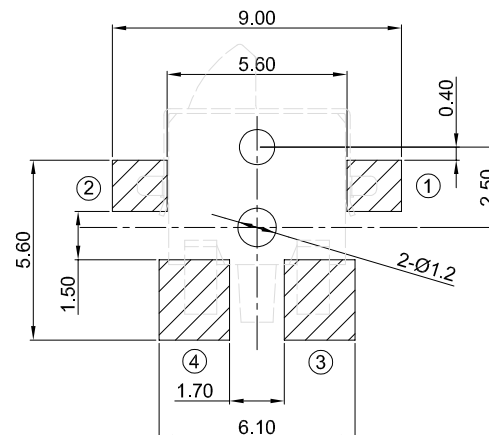
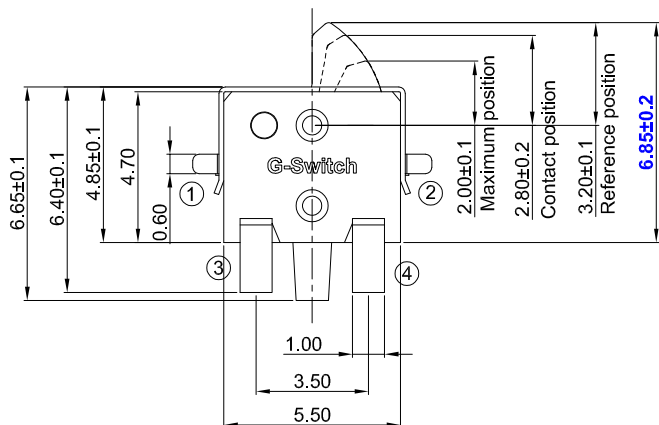
Switch Height(mm)
H0685=6.85

Switch Lifetime
L03=30,000 Cycles

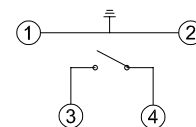
Detail
A=With Pilot

G-Switch Specification:

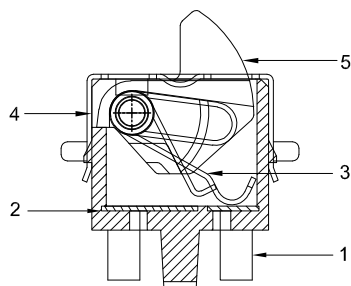
1. Operating temperature range: -30°C ~ +85°C
2. Rating: 50mA. 12V DC
3. Insulation resistance: 50MΩ min. 100V DC
4. Dielectric strength: 250V AC for 1 min
5. Contact resistance: 1.0Ω max.
6. Travel: 0.5±0.3mm



PCB REFERENCE DIAGRAM
TOLERANCE:±0.05



CIRCUIT DIAGRAM



| NO. | PART NAME | MATERIAL | REMARK |
|-----|-----------|--------------------------|------------|
| 5 | PLUNGER | HIGH TEMPERATURE PLASTIC | PPA BLACK |
| 4 | COVER | C5210 | Tin PLATED |
| 3 | CONTACT | STAINLESS STEEL | Ag PLATED |
| 2 | BASE | HIGH TEMPERATURE PLASTIC | PPA BLACK |
| 1 | TERMINAL | C5210 | Ag PLATED |



SCALE: 1:1 UNIT: mm
SIZE: A4

Unless otherwise
General Tolerance:
X.x ±0.30
X.xx ±0.20
X.xxx ±0.10
X* ±3°

Title: Horizontal Detector Switch
SMT 6.10×4.85×H6.85mm

Molde Code: DS-SB009A-H0685-L03A

| DRAWN | CHECKED | APPROVED | DATE |
|-------|---------|----------|------------|
| Jiang | Xia | Chen | 2025.03.26 |



REV: A0 SHEET: 1/1

1

2

3

4

5