

GT-TC031X-HXXX-LX A

G-Switch

Operating Force

A=160gf
B=250gf
C=100gf
D=400gf

DETAIL

A=Base With Pilot
N=Non Pilot

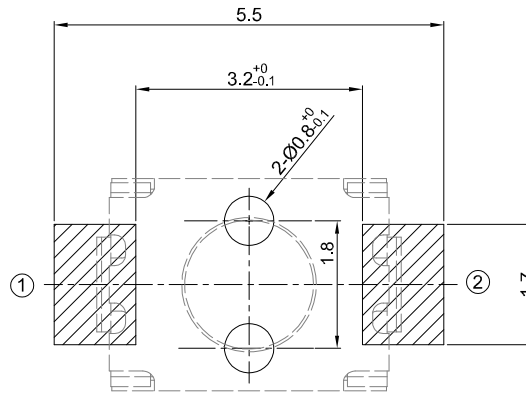
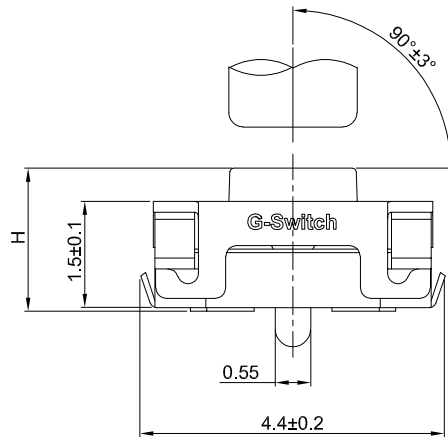
Switch Height (mm)

H018=1.8 (PPA)
H020=2.0 (PPA)
H025=2.5 (PPA)
H030=3.0 (PPA)
H040=4.0 (C2680)

Switch Lifetime (Force)

L1=100,000 Cycles

Keying Tip Tilt

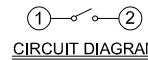


RECOMMENDED PCB LAYOUT
TOLERANCE: ±0.05

G-Switch Specification:

1. Operating temperature range: -40°C ~ +85°C
2. Rating: 50mA, 12V DC
3. Insulation resistance: 100MΩ min, 100V DC
4. Dielectric strength: 250V AC for 1 min
5. Contact resistance: 100mΩ max.
6. Travel: 0.2±0.1mm

5	TERMINAL	COPPER ALLOY	Ag PLATING
4	STEM	PPA/C2680	-
3	TAPE	POLYIMIDE	YELLOW (TRANSPARENT)
2	CONTACT	STAINLESS STEEL	Ag PLATING
1	CASE	HIGH TEMPERATURE PLASTIC	-
NO.	PART NAME	MATERIAL	REMARK



CIRCUIT DIAGRAM



SCALE: 1:1 UNIT: mm
SIZE: A4

Unless otherwise
General Tolerance:

X. ±0.40
X.x ±0.30
X.xx ±0.20
X* ±3°

Title: Vertical Tact Switch
U Type 4.0×3.0×Hmm

Molde Code: GT-TC031X-HXXX-LXA

DRAWN	CHECKED	APPROVED	DATE
Jiang	Xia	Chen	2025.02.01



REV: A0 SHEET: 1/1