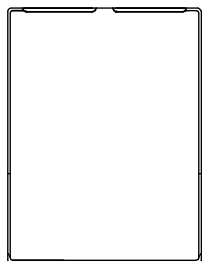


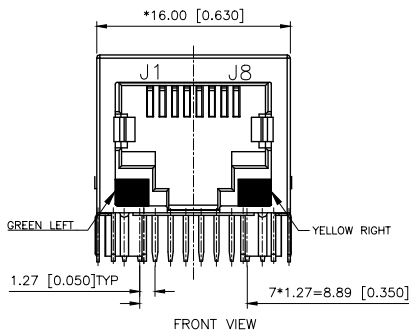
REVISIONS					
REV.	ECN NO.	LOCATION	DESCRIPTION	DATE	DESIGN
A0	N/A		INITIAL RELEASE	/	/
A1	N/A		图面升级整理图面	2025.04.28	阿树



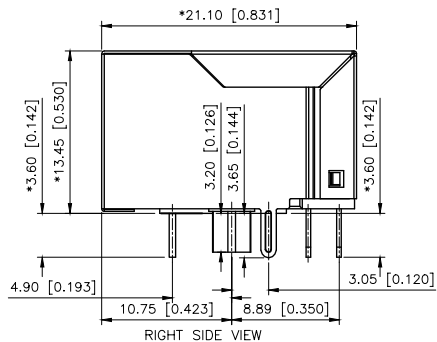
TOP VIEW

- Electrical 电气:
- Turn ratio 匝数比: 2~3; J1~J2=1CT:1CT(±2%)
4~7; J3~J6=1CT:1CT(±2%)
5~6; J4~J5=1CT:1CT(±2%)
8~9; J7~J8=1CT:1CT(±2%)
 - OCL: 350uH Min.at 100KHz 100mV 8mA DC.
 - Insertion Loss 插入损耗: -1.0 dB Max 1~100MHz.
 - Return loss 回波损耗: -18dB Min 1~30MHz.
-14dB Min 30~60MHz.
-12dB Min 60~80MHz.
-10dB Min 80~100MHz.
 - Cross talk: -40dB Min 1~30MHz;
-35dB Min 30~60MHz;
-30dB Min 60~100MHz;
 - CMR: -30dB Min 1~100MHz;
 - Hi-Pot: 2250V DC 6S 1mA PRI TO SEC.

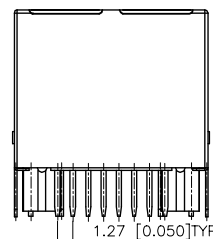
- MATERIAL 材料:
- HOUSING 外壳: PBT,UL94V-0,BLACK.
 - TERMINALS BRACKET 端子支架: PBT,UL94V-0,BLACK.
 - SHIELD 保护物: C2680,T=0.20MM,NICKEL PLATING ON ALL AREA.
 - TERMINAL 端子: PHOSPHOR BRONZE C5210,T=0.35MM, GOLD PLATING ON CONTACT AREA.
- MECHANICAL 机械:
- DURABILITY 耐用性: 750 CYCLES MIN.
 - MATING FORCE 配合力: 23N MAX.
 - OPERATING TEMPERATURE 工作温度: -40°C~+85°C.
 - STORAGE TEMPERATURE 储存温度: -40°C~+85°C.
 - ALL CRITICAL DIMENSIONS WITH "*"



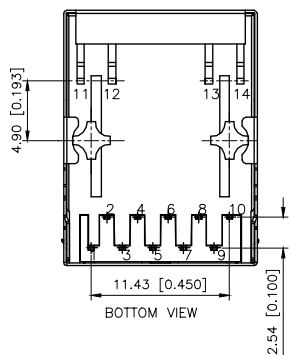
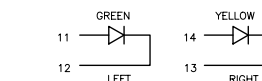
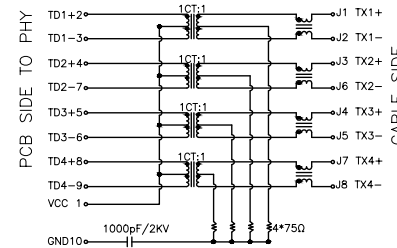
FRONT VIEW



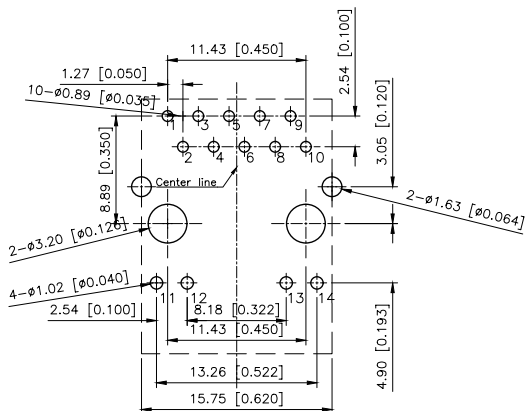
RIGHT SIDE VIEW



BACK VIEW



BOTTOM VIEW



RECOMMENDED PCB LAYOUT VIEWED FROM COMPONENT SIDE

X01AQ066BA2AD4

- 1:Au=1U"
- 3:Au=3U"
- 4:Au=6U"
- 5:Au=15U"
- 6:Au=30U"

LED Specification

Standard LED Color	LED Wavelength	Forward(A)	Forward(V)
Green	568nm	20mA	1.85-2.45V
Yellow	585nm	20mA	1.7-2.2V

AuGLAR	±5°
X.	±0.40
X.x	±0.30
X.xx	±0.20
X.xxx	±0.15
UNSPECIFIED TOLERANCES	



DESIGN	阿树	VIEW:		MODEL TYPE:	RJ JACK
CHECKED		UNIT:	mm/in	PART NO.:	X01AQ066BA2AD4
APPROVED		SIZE:	A4	DWG NO.:	X-X01AQ066BA2AD4

SCALE	PAGE	REVISION
N/A	1/1	A1