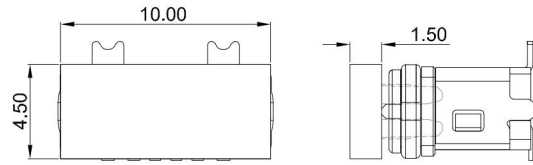
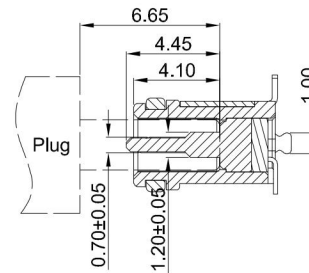
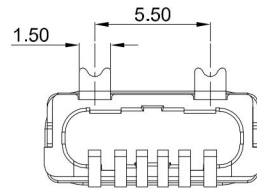
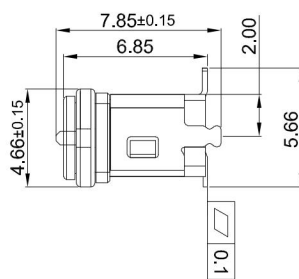
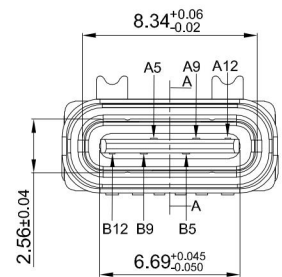


SHELL FITTING DIAGRAM



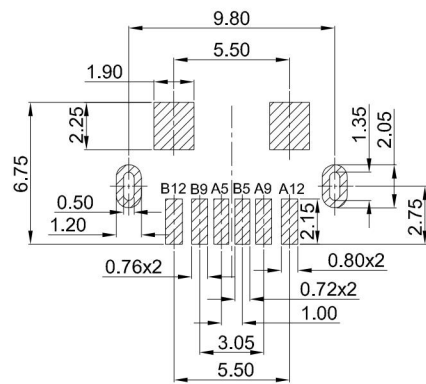
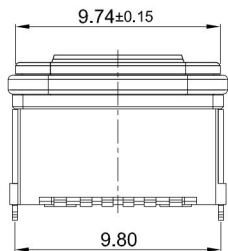
CAP DIMENSIONS



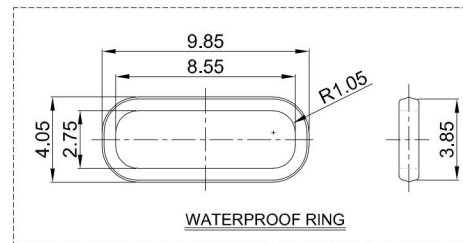
SECTION A-A
AFTER MATING

G-Switch USB-C Specification:

1. Current rated: 5A on vbus/1.25A on vconn/0.25A on other
2. Voltage rating: 24V AC
3. Withstanding voltage: 100V AC/minute
4. Contact resistance: 40mΩ Max
5. Insulation resistance: 100MΩ Min
6. Operating temperature: -40°C ~ +85°C
7. Mating force: 5N~20N
8. Unmating force: 8N~20N
9. Durability cycle: 10,000 cycles
10. Waterproof grade: IP-X7.

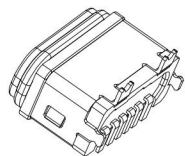


RECOMMENDED PCB LAYOUT
TOLERANCE:±0.05

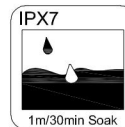


WATERPROOF RING

A1	A2	A3	A4	A5	A6	A7	A8	A9	A10	A11	A12
				CC1				VBUS			GND
				Second				First			First
B12	B11	B10	B9	B8	B7	B6	B5	B4	B3	B2	B1
GND			VBUS				CC2				
First			First				Second				



1	TERMINALS	COPPER ALLOY	Au PLATING ON CONTACT AREA
2	HOUSING	HIGH TEMPERATURE PLASTIC	BLACK UL 94 V-0
3	SHELL	STAINLESS STEEL	NI PLATED
4	MID PLATE	STAINLESS STEEL	---
5	WATERPROOF RING	SILICA GEL	RED
NO.	PARTS	MATERIAL	REMARKS



SCALE: 3:1 UNIT: mm
SIZE: A4

Unless otherwise
General Tolerance:
X. ±0.40
X.x ±0.30
X.xx ±0.20
X.xxx ±0.10
Angles ±5°

Title: Vertical Type-c 6P Female SMT H=6.8mm			
Molde Code: GT-USB-7083A			
DRAWN	CHECKED	APPROVED	DATE
Xia	Chen	Chen	2023.06.29



REV: A0 SHEET: 1/1