

10 9 8 7 6 5 4 3 2 1

F

E

D

C

B

A

F

E

D

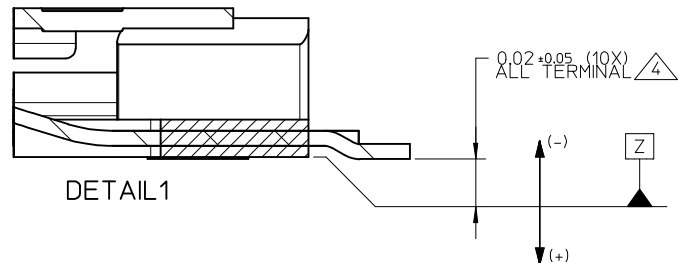
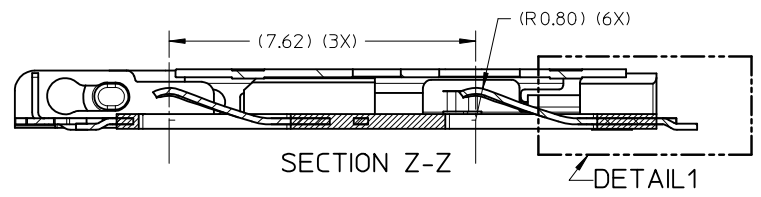
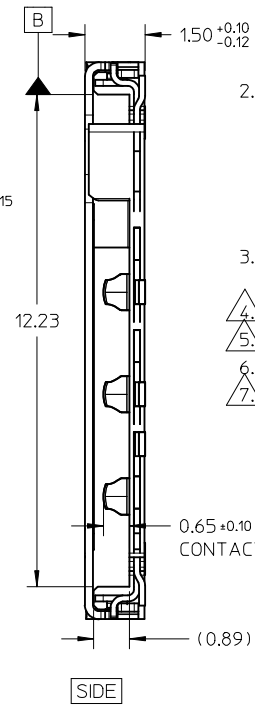
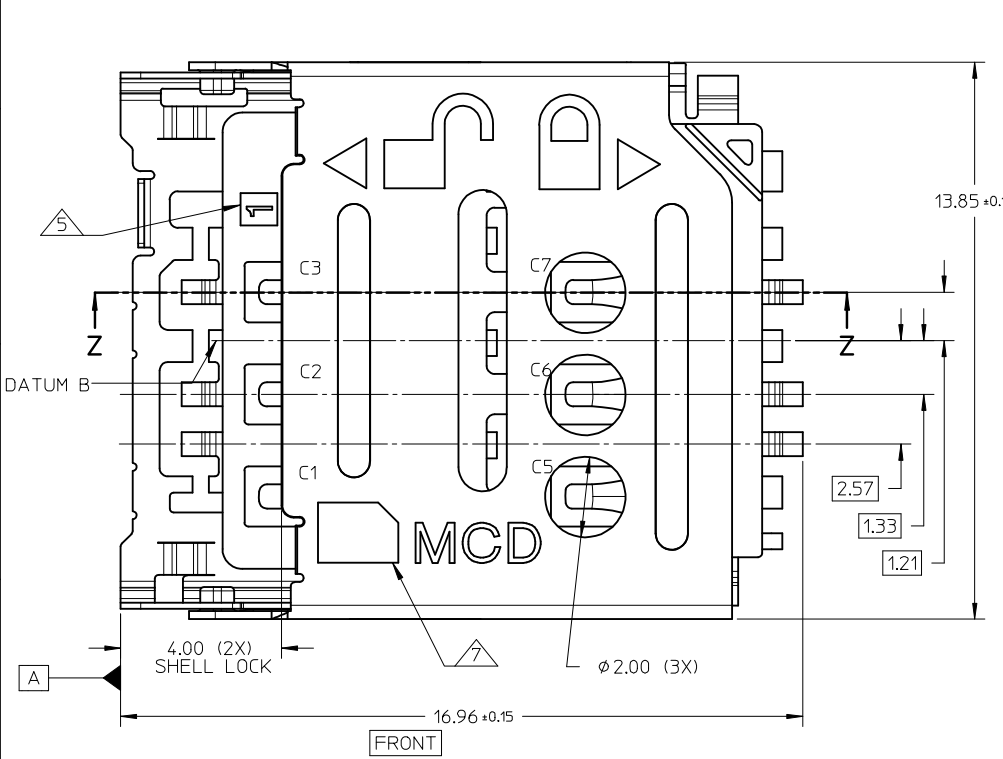
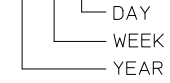
C

B

A

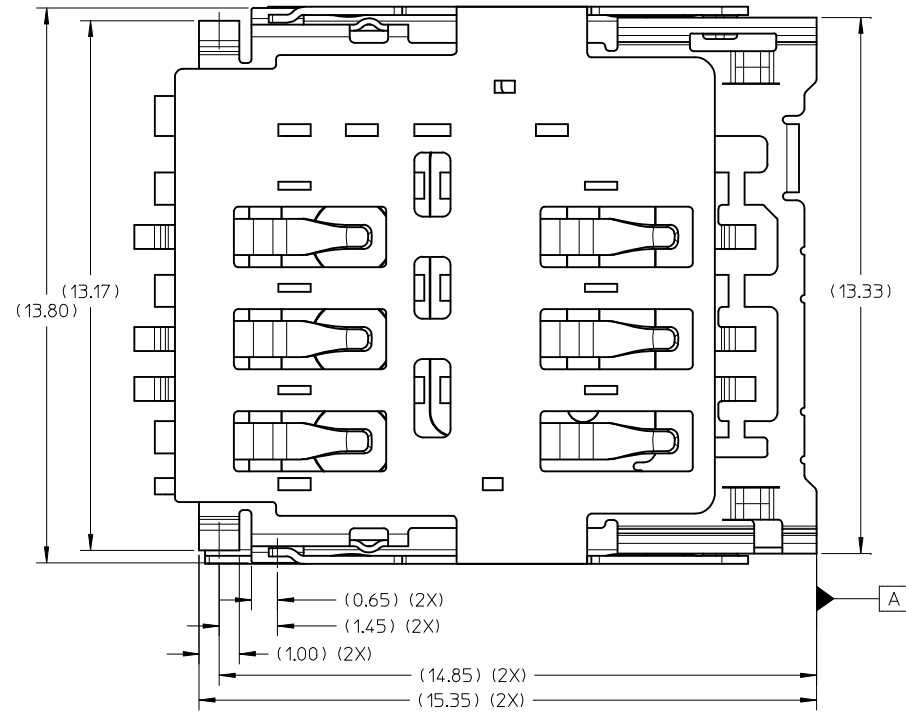
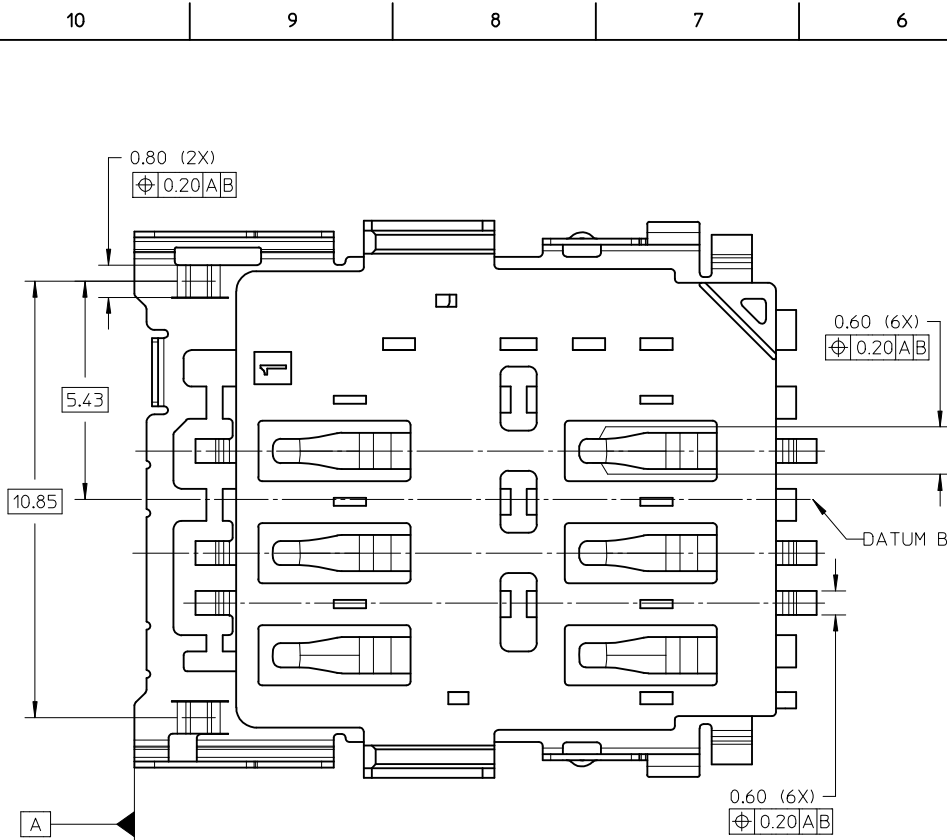
NOTE:

- MATERIAL: HOUSING : LIQUID CRYSTAL POLYMER, GLASS FILLED, UL94-V0, COLOR: BLACK  
TERMINAL : PHOSPHOR BRONZE  
METAL SHELL : STAINLESS STEEL
- FINISH:  
TERMINAL:-  
CONTACT : 0.38µM MIN. GOLD OVER 1.27µM MIN NICKEL UNDERPLATE.  
SOLDERTAIL: 1.27µM MIN. MATTE TIN OVER 1.27µM MIN NICKEL UNDERPLATE.  
SHELL :-  
: NO PLATING
- PRODUCT SPECIFICATION: PS-78800-001  
PACKAGING SPECIFICATION: PK-78800-001
- SOLDERTAIL (10X) COPLANARITY 0.08MM MAX (BEFORE REFLOW).
- CAVITY NUMBER LOCATION.
- COMPLIANT TO RoHS DIRECTIVE 2011/65/EU AND ELV DIRECTIVE 2000/53/EC
- MANUFACTURER ID AND DATE CODE LOCATION.  
DATE CODE ON SHELL : \* \* \* \* \*



<b>UPDATE VIEWS</b> EC NO: S2015-0120 DRWING: EANG CHKD: JTAN02 APPR: KHL IM	DESCRIPTION REV	QUALITY SYMBOLS	GENERAL TOLERANCES (UNLESS SPECIFIED)	DIMENSION STYLE	SCALE	DESIGN UNITS	THIRD ANGLE PROJECTION	
		$F_A=0$ $F_G=0$ $F_P=0$	mm    INCH 4 PLACES ± --- ± --- 3 PLACES ± --- ± --- 2 PLACES ± 0.20 ± --- 1 PLACE ± --- ± --- 0 PLACE ± --- ± ---	MM ONLY	NTS	METRIC		
			ANGULAR ± 3 ° DRAFT WHERE APPLICABLE MUST REMAIN WITHIN DIMENSIONS	DRAWN BY: EANG    DATE: 2012/11/29 CHECKED BY: JTAN02    DATE: 2013/03/11 APPROVED BY: KHL IM    DATE: 2013/03/14	TITLE	SALES DRAWING MICRO SIM CONNECTOR 1.50MM HEIGHT, HINGED		
				MATERIAL NO. <b>788000001</b>	DOCUMENT NO. <b>SD-78800-001</b>	<b>molex</b>		
				SIZE <b>A3</b>	THIS DRAWING CONTAINS INFORMATION THAT IS PROPRIETARY TO MOLEX INCORPORATED AND SHOULD NOT BE USED WITHOUT WRITTEN PERMISSION			
							SHEET NO. 1 OF 3	

9 8 7 6 5 4 3 2 1



BOTTOM VIEW

REV	DESCRIPTION
A	UPDATE VIEWS
	IEC NO: S2015-0120
	DRW: EANG 2015/06/26
	CHKD: JTAN02 2015/08/26
	APPR: KHL IM 2015/08/27

QUALITY SYMBOLS
$\nabla_F = 0$
$\nabla_E = 0$
$\nabla_D = 0$

GENERAL TOLERANCES (UNLESS SPECIFIED)	
	mm
4 PLACES	± 0.10
3 PLACES	± 0.15
2 PLACES	± 0.20
1 PLACE	± 0.30
0 PLACE	± 0.50

ANGULAR ± 3°  
DRAFT WHERE APPLICABLE MUST REMAIN WITHIN DIMENSIONS

DIMENSION STYLE	
MM ONLY	
DRAWN BY	DATE
EANG	2012/11/29
CHECKED BY	DATE
JTAN02	2013/03/11
APPROVED BY	DATE
KHL IM	2013/03/14
MATERIAL NO.	
788000001	

SCALE	DESIGN UNITS	THIRD ANGLE PROJECTION
NTS	METRIC	
TITLE		
SALES DRAWING MICRO SIM CONNECTOR 1.50MM HEIGHT, HINGED		
<b>molex</b>		
DOCUMENT NO.		SHEET NO.
SD-78800-001		2 OF 3
THIS DRAWING CONTAINS INFORMATION THAT IS PROPRIETARY TO MOLEX INCORPORATED AND SHOULD NOT BE USED WITHOUT WRITTEN PERMISSION		

10 9 8 7 6 5 4 3 2 1

F

E

D

C

B

A

F

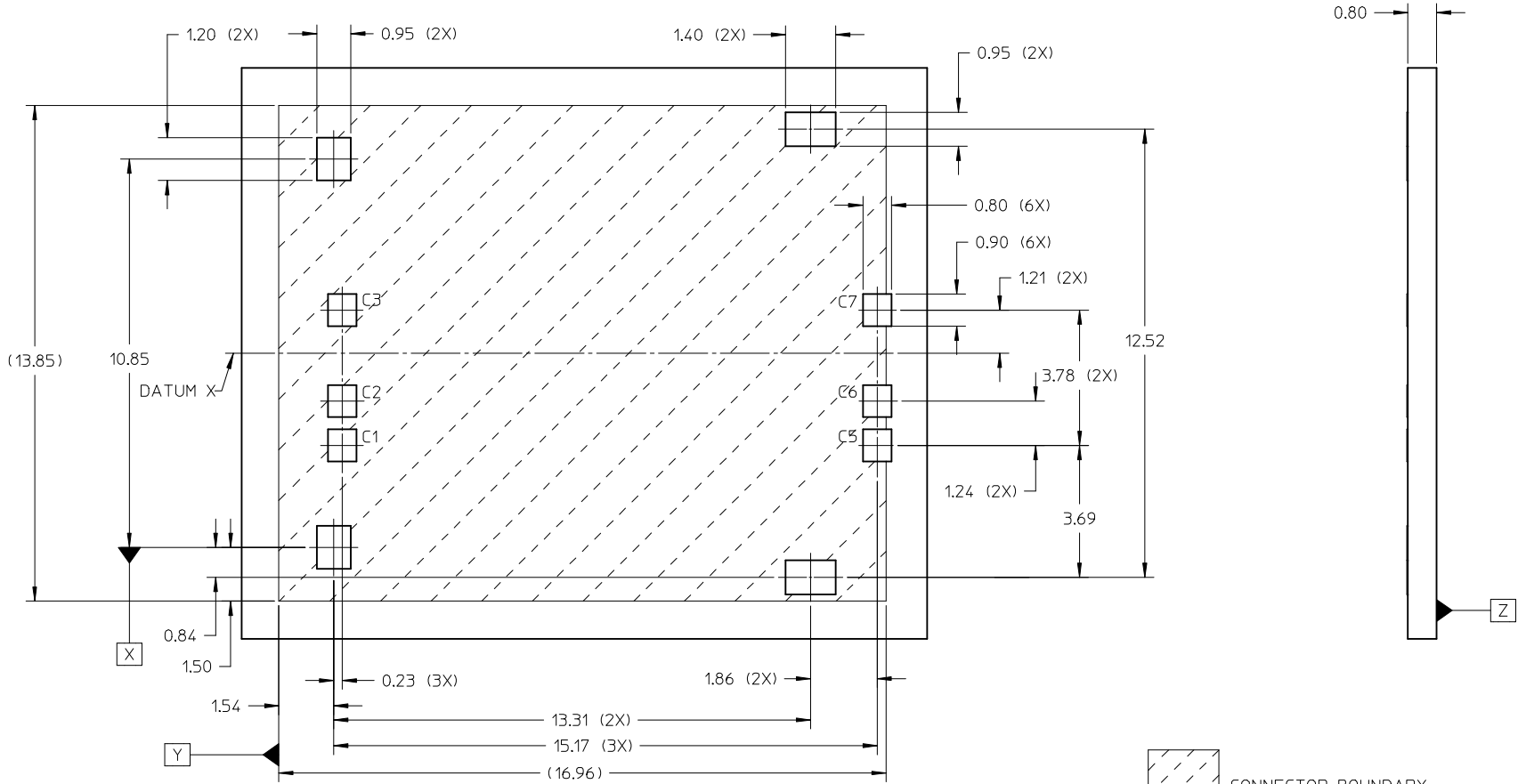
E

D

C

B

A



RECOMMENDED PCB LAYOUT  
PWB TOLERANCE: ±0.05MM

CONNECTOR BOUNDARY  
- - - - - KEEP OUT ZONE

<b>UPDATE VIEWS</b> EC NO: S2015-0120 DRW: EANG CHKD: JTAN02 APPR: KHL IM 2015/06/26 2015/08/26 2015/08/27	QUALITY SYMBOLS $\nabla_A = 0$ $\nabla_C = 0$ $\nabla_P = 0$	GENERAL TOLERANCES (UNLESS SPECIFIED)		DIMENSION STYLE <b>MM ONLY</b>		SCALE NTS	DESIGN UNITS METRIC	THIRD ANGLE PROJECTION			
		4 PLACES ± --- ± ---	3 PLACES ± --- ± ---	DRAWN BY EANG	DATE 2012/11/29	TITLE SALES DRAWING MICRO SIM CONNECTOR 1.50MM HEIGHT, HINGED					
		2 PLACES ± 0.20 ± ---	1 PLACE ± --- ± ---	CHECKED BY JTAN02	DATE 2013/03/11	APPROVED BY KHL IM					
		0 PLACE ± --- ± ---	ANGULAR ± 3 °		MATERIAL NO. 788000001	DATE 2013/03/14	DOCUMENT NO. SD-78800-001				SHEET NO. 3 OF 3
DRAFT WHERE APPLICABLE MUST REMAIN WITHIN DIMENSIONS		SIZE A3	THIS DRAWING CONTAINS INFORMATION THAT IS PROPRIETARY TO MOLEX INCORPORATED AND SHOULD NOT BE USED WITHOUT WRITTEN PERMISSION								

9 8 7 6 5 4 3 2 1