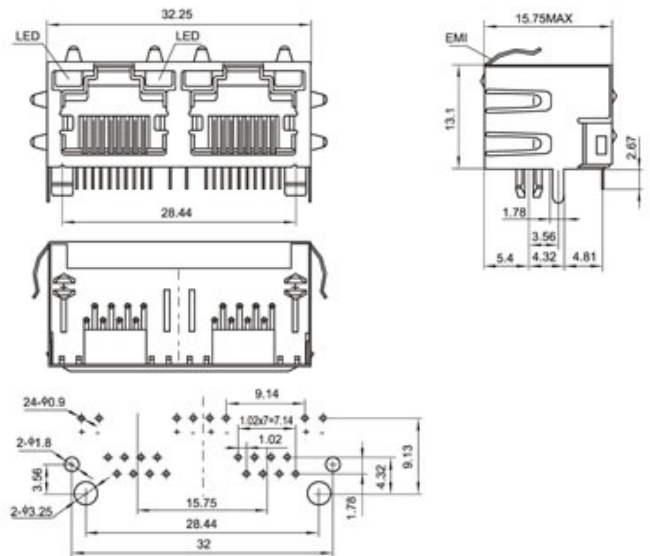


**◆ SPECIFICATIONS**

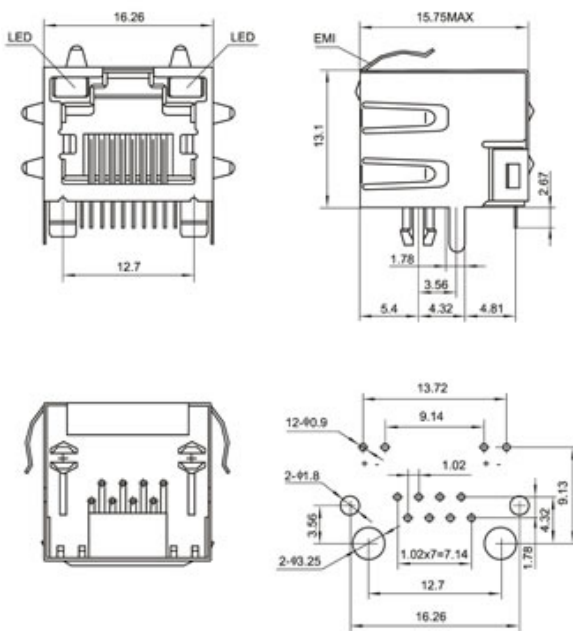
**Unit:mm**

- ◇ Temperature: -10~70℃
- ◇ Rated Load: DC125V 1.5A
- ◇ Contact Resistance:  $\leq 0.03\Omega$
- ◇ Insulation Resistance:  $\geq 1000M\Omega$  DC100V
- ◇ Withstand Voltage: AC 1000V(50Hz)/min
- ◇ Insertion and Extraction Force: 20~80N
- ◇ Life:  $\geq 750$ cycles

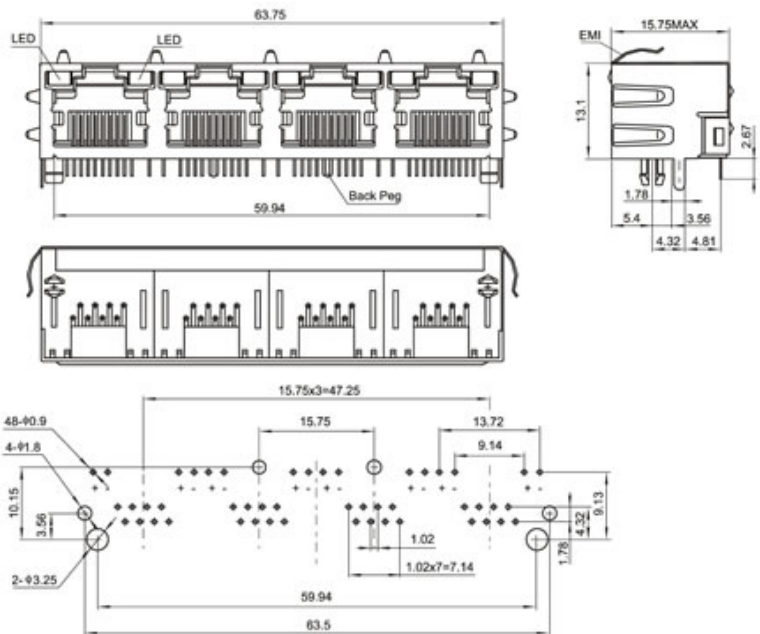
**RJ45-B-1x2**



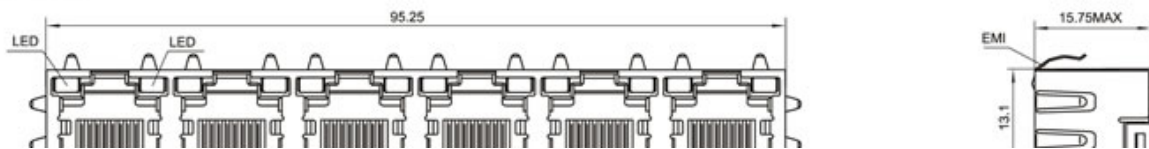
**RJ45-B-1x1**

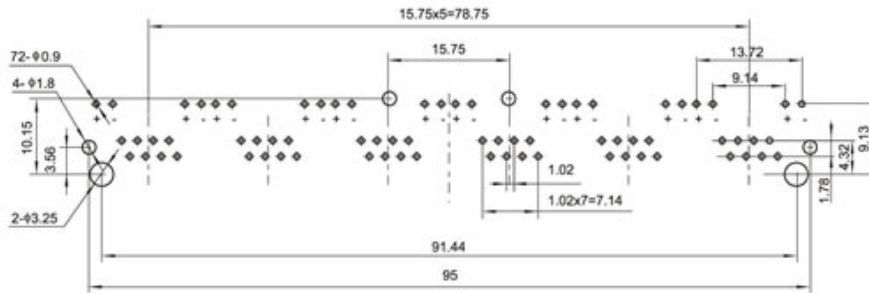
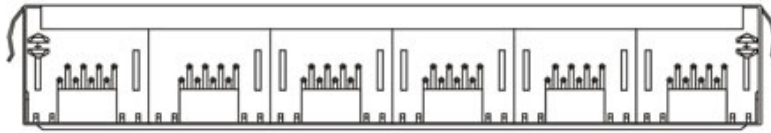
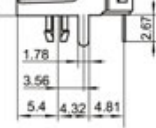
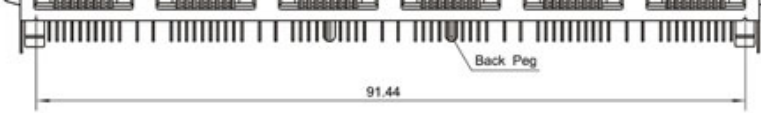


**RJ45-B-1x4**



**RJ45-B-1x6**





### RJ45-B-1x8

