

# SIC502D

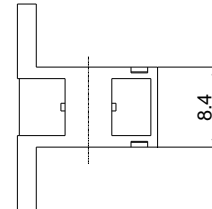
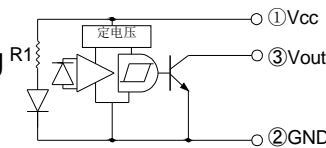
## Photo Interrupter

### Dimensions

(unit: mm)

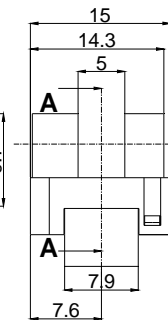
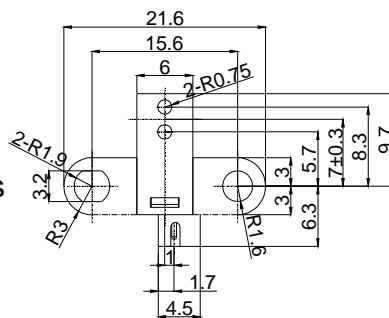
SIC502D is Transmission type photointerrupter combined high power GaAs IRED with Photo-IC. Being suitable for highly accurate position detecting, it is great help in developing an object detecting system of high performance and high reliability.

内部回路图

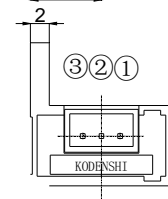
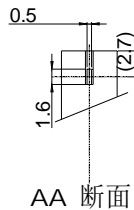
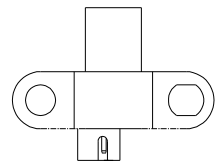


### Features

- Supply voltage 5V
- GAP:5.0mm
- With the installation positioning boss
- RoHS Compliance



Optical center



General Tolerance (±0.2)

### Applications

- Copiers, Printers, ATM
- Amusement machines
- Exchanging machines
- Ticket vending machines

### Maximum Ratings

(Ta=25°C)

Item	Symbol	Ratings	Unit
Supply voltage	V <sub>CC</sub>	-0.5~+7	V
Output voltage	V <sub>O</sub>	7	V
Low level output current	I <sub>OL</sub>	16	mA
Power dissipation	P <sub>D</sub>	100	mW
Operating temperature *1*2	T <sub>opr</sub>	-20~+75	°C
Storage temperature *1*2	T <sub>stg</sub>	-30~+85	°C

\*1. No icebond or dew

\*2. The soldering should be 1.2mm away from bottom of the holder t=within 3s

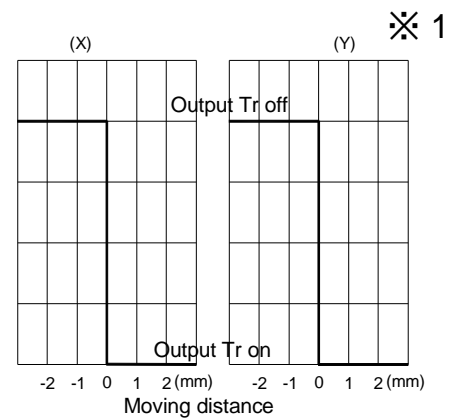
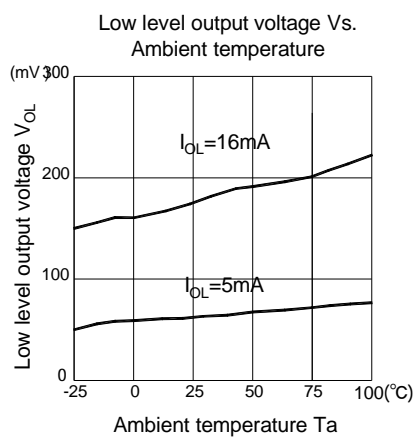
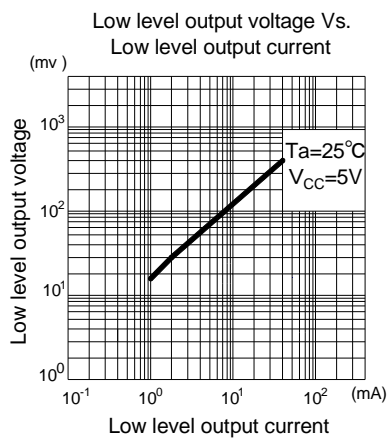
# Photo Interrupter

## SIC502D

### Electro-Optical Characteristics

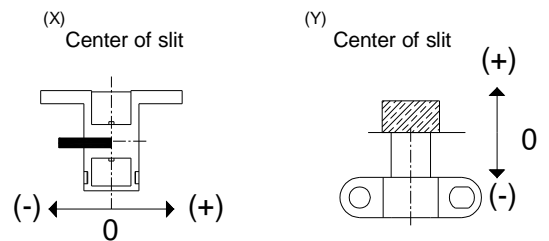
(Ta=25°C)

Item	Symbol	Conditions	Min	Typ	Max	Unit
Operating supply voltage	$V_{CC}$	-	4.5	-	5.5	V
Low level output voltage	$V_{OL}$	$V_{CC}=5V, I_{OL}=16mA, (Shading)$	-	0.2	0.4	V
High level output voltage	$V_{OH}$	$V_{CC}=5V, R_L=10K \Omega, (Non-shading)$	4.5	-	-	V
Low level supply current	$I_{CCL}$	$V_{CC}=5V, (Shading)$	-	19	35	mA
High level supply current	$I_{CCH}$	$V_{CC}=5V, (Non-shading)$	-	19	35	mA
Frequency	f	$V_{CC}=5V, R_L=10K \Omega$	3000	-	-	Hz



Method of measure position detection characteristic

※ 1



## Photo Interrupter

# SIC502D

### Packing Specification

- 1.Fixed quantity (max 500pcs) of the products are packed into plastic bag(300\*380)
- 2.Five bags of the products are put into #2 box
3. Two #2 boxes are put into #3 box(max 5000pcs)
4. Packing slit is pasted on #3 box.

