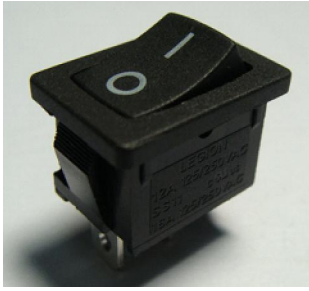




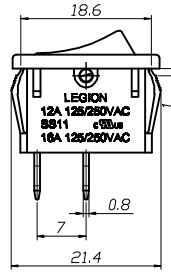
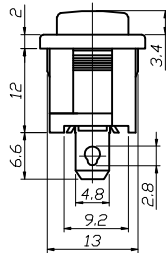
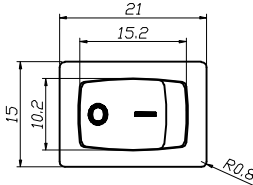
ROCKER SWITCH

SS11 SERIES



**SPECIFICATION**

Rating:12A 125/250VAC(CUL)  
 16A 125/250VAC(CUL)  
 16(4)A 250V~T125/55(ENEC10,VDE,CQC)  
 INITIAL CONTACT RESISTANCE:20mΩ Max  
 OPERATION FORCE:500±200gf  
 INSULATION RESISTANCE:100mΩ MIN 500VDC  
 WITHSTAND VOLTAGE:1000VAC FOR 1MINUTE  
 ENDURANCE:10,000CYCLES



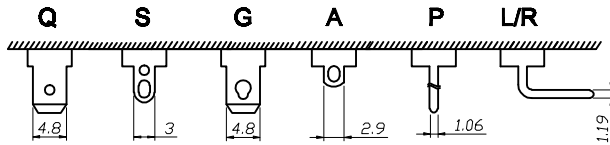
TERMINAL TYPE		
Q	QUICK-CONN	
S	SOLDERING	
G	QUICK-CONN	
A	SOLDERING	
P	PC TYPE	
L	PC TYPE	

**CURRENT CIRCUIT**



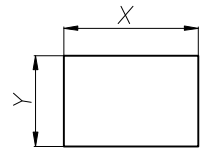
20	ON	-	OFF	SPST
21	(ON)	-	OFF	SPST
22	ON	-	(OFF)	SPST
23	ON		OFF	SPST
30	ON		ON	SPDT

**Terminal List**



**PANEL CUTOUT DIMENSION**

PANEL THICKNESS	X	Y
0.8~1.2mm	19.2 <sup>+0</sup> <sub>-0.1</sub> mm	12.9 <sup>+0.1</sup> <sub>0</sub> mm
1.3~2.0mm	19.4 <sup>+0</sup> <sub>-0.1</sub> mm	12.9 <sup>+0.1</sup> <sub>0</sub> mm
2.1~2.5mm	19.8 <sup>+0</sup> <sub>-0.1</sub> mm	12.9 <sup>+0.1</sup> <sub>0</sub> mm



**SS11 SERIES ORDERING SYSTEM**

