

产品规格书

**PRODUCT SPECIFICATION**

客户名称:  
CUSTOMER:

产品名称:

PRODUCT NAME:

气体放电管

型号:

MODEL:

5.5\*6

规格:

SPECIFICATION:

1000-3600V

料号:

PART NO.:

供应商:

惠州市三特电器有限公司

SUPPLIER:

Huizhou Sante Electrical Appliance Co. Ltd.

地址:

惠州市博罗县罗阳镇义和大小塘村小塘组

ADDRESS:

Boluo County, Huizhou City, Luo Yang Zhen Yi Tang Cun Tang and the size of small group

TEL: 0752-6623066

[Http:www.stfuse.com](http://www.stfuse.com)

FAX: 0752-6637866

E-mail:2744550951@qq.com

| 编制          | 审核         | 批准          |
|-------------|------------|-------------|
| PREPARED BY | CHECKED BY | APPROVED BY |
|             |            |             |

| 承认        | 审核         | 批准          |
|-----------|------------|-------------|
| SIGNATURE | CHECKED BY | APPROVED BY |
|           |            |             |

供方签章:

SUPPLIER:

需方签章:

CUSTOMER:

日期: 2018-9-10

DATE: 2018-9-10

日期:

DATE:

## ■ 特性

### Features

1. 符合 RoHS  
RoHS compliant
2. 无引线型或轴向引线型可选  
Available with or without leads
3. 工作温度范围:  $-40^{\circ}\text{C} \sim +85^{\circ}\text{C}$   
Operating temperature range:  $-40^{\circ}\text{C} \sim +85^{\circ}\text{C}$
4. 储存温度范围:  $-40^{\circ}\text{C} \sim +115^{\circ}\text{C}$   
Storage temperature range:  $-40^{\circ}\text{C} \sim +115^{\circ}\text{C}$
5. 安规认证: UL/cUL E496056  
Agency recognition: UL/cUL E496056

## ■ 用途

### Applications

1. 冰箱  
Refrigerator
2. 洗衣机  
Washing machine
3. 空调  
Air condition
4. 通信设备  
Telecommunication or telephone system
5. 开关电源  
Switching power supply
6. 变频器  
Inverter

## ■ 型号说明:

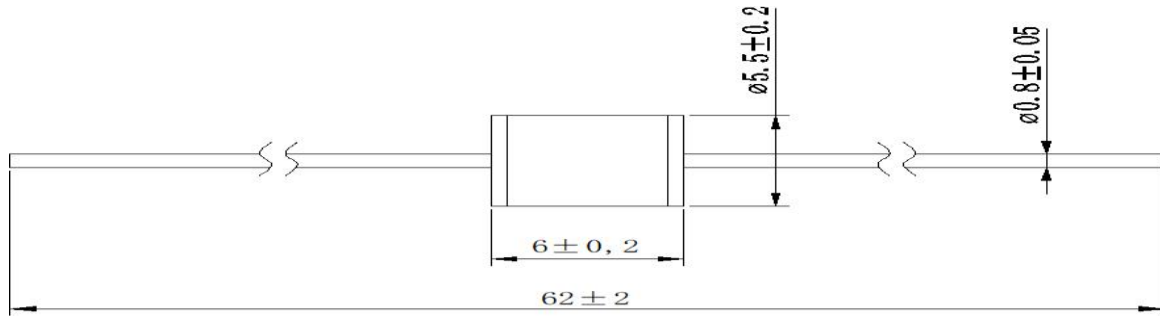
### Part Numbers System:

5S L 3600 M - X  
① ② ③ ④ ⑤

1. 尺寸:  $\phi 5.5 \times 6\text{mm}$   
Size:  $\phi 5.5 \times 6\text{mm}$
2. 引线形式: L-轴向引线 S-无引线  
Lead Wire Style: L-Axial Lead, S-No Lead
3. 直流击穿电压: 1000-3600V  
DC Spark-over Voltage: 1000-3600V
4. 最大冲击放电电流(8/20 $\mu\text{s}$ ): M:3KA  
Max. Impulse Discharge Current (8/20 $\mu\text{s}$ ): M:3KA
5. 客户代码, 可能是一位数字, 字母或空白  
Customer Code, maybe any one digit, letter or blank

## ■ 产品尺寸: (单位: mm)

Product Dimensions (Unit: mm)

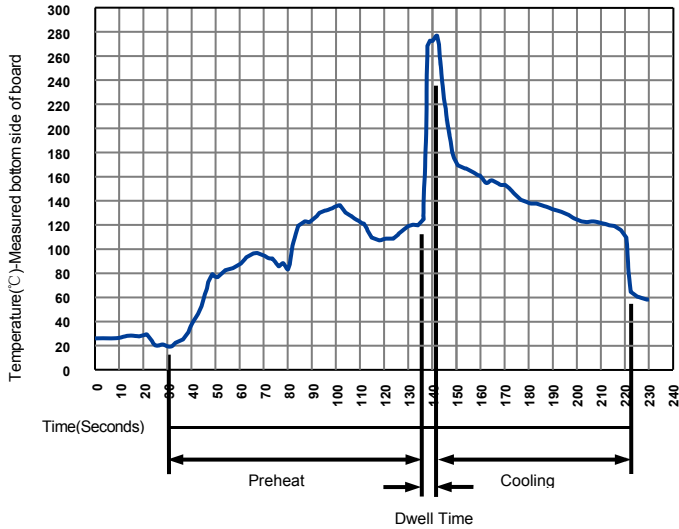


## ■ 电气特性

### Characteristics

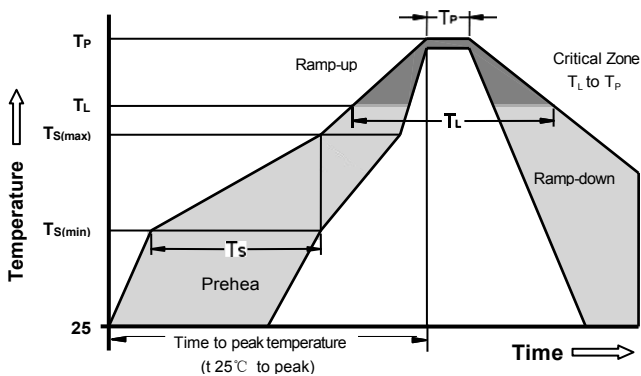
| Part Number                            |            | DC Spark-over Voltage <sup>1)2)</sup><br>@100V/S | Impulse Spark-over Voltage |        | Insulation Resistance <sup>3)</sup> | Capacitance<br>@1MHz      | Glow Voltage<br>@10mA | Arc Voltage<br>@1A | AC withstand voltage<br>@0.5mA<br>1Min | Life Ratings                         |               |                                  |
|--|------------|--|----------------------------|--------|-------------------------------------|---------------------------|-----------------------|--------------------|--|--------------------------------------|---------------|----------------------------------|
|  |            |  | 100V/μS                    | 1KV/μS |                                     |                           |                       |                    |  | Impulse Discharge Current<br>@8/20μS |               | AC Discharge Current<br>@50Hz 1S |
|  |            |  | Max                        | Max    |                                     |                           |                       |                    |  | Nominal<br>±5 times                  | Max<br>1 time | Nominal<br>5 times               |
| DIP                                    | SMD        | V  | V                          | V      | GΩ                                  | pF                        | V                     | V                  | V                                      | KA                                   | KA            | A                                |
| 5SL1000M-5                             | 5SS1000M-5 | 1000±20%   | 1600                       | 1800   | 1                                   | 1                         | 160                   | 15                 | 500                                    | 3                                    | 4             | 3                                |
| 5SL1200M-5                             | 5SS1200M-5 | 1200±20%   | 1800                       | 2000   | 1                                   | 1                         | 160                   | 15                 | 600                                    | 3                                    | 4             | 3                                |
| 5SL1400M-5                             | 5SS1400M-5 | 1400±20%   | 2200                       | 2400   | 1                                   | 1                         | 235                   | 18                 | 700                                    | 3                                    | 3.5           | 2                                |
| 5SL1500M-5                             | 5SS1500M-5 | 1500±20%   | 2300                       | 2500   | 1                                   | 1                         | 235                   | 18                 | 750                                    | 3                                    | 3.5           | 2                                |
| 5SL1600M-5                             | 5SS1600M-5 | 1600±20%   | 2400                       | 2600   | 1                                   | 1                         | 235                   | 18                 | 800                                    | 3                                    | 3.5           | 2                                |
| 5SL2000M-5                             | 5SS2000M-5 | 2000±20%   | 2800                       | 3000   | 1                                   | 1                         | 260                   | 30                 | 1000                                   | 3                                    | 3.5           | 2                                |
| 5SL2400M-5                             | 5SS2400M-5 | 2400±20%   | 3300                       | 3500   | 1                                   | 1                         | 260                   | 30                 | 1300                                   | 2                                    | 3             | 2                                |
| 5SL2700M-5                             | 5SS2700M-5 | 2700±20%   | 3400                       | 3600   | 1                                   | 1                         | 260                   | 30                 | 1400                                   | 2                                    | 3             | 2                                |
| 5SL3000M-5                             | 5SS3000M-5 | 3000±20%   | 3800                       | 4000   | 1                                   | 1                         | 260                   | 30                 | 1600                                   | 2                                    | 3             | 2                                |
| 5SL3500M-5                             | 5SS3500M-5 | 3500±20%   | 4300                       | 4500   | 1                                   | 1                         | 260                   | 30                 | 1800                                   | 2                                    | 3             | 2                                |
| 5SL3600M-5                             | 5SS3600M-5 | 3600±20%   | 4400                       | 4600   | 1                                   | 1                         | 260                   | 30                 | 1900                                   | 2                                    | 3             | 2                                |
| Glow to Arc transition Current.....    |            |  |                            |        |                                     | ~0.3A                     |                       |                    |  |                                      |               |                                  |
| Weight.....                            |            |  |                            |        |                                     | ~0.82g                    |                       |                    |  |                                      |               |                                  |
| Operation and storage temperature..... |            |  |                            |        |                                     | -40~85°C                  |                       |                    |  |                                      |               |                                  |
| Marking, black.....                    |            |  |                            |        |                                     | <br>xxxx -Nominal voltage |                       |                    |  |                                      |               |                                  |

## Soldering Parameters - Wave soldering (Thru-Hole Devices)



| Wave Soldering Condition |                   | Pb-Free assembly |
|--------------------------|-------------------|------------------|
| Preheat                  | Temperature Min   | 100°C            |
|                          | Temperature Max   | 150°C            |
|                          | Time (Min to Max) | 60-180 Seconds   |
| Solder Pot Temperature   |                   | 280°C Max        |
| Solder Dwell Time        |                   | 2-5 Seconds      |

## Soldering Parameters - Reflow Soldering (Surface Mount Devices)



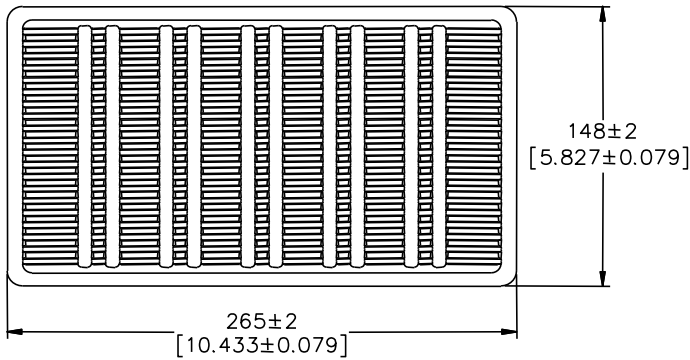
| Reflow Condition                                     |                                   | Pb - Free assembly |
|--|-----------------------------------|--------------------|
| Preheat  | -Temperature Min ( $T_{s(min)}$ ) | 150°C              |
|  | -Temperature Max ( $T_{s(max)}$ ) | 200°C              |
|  | - Time (min to max) ( $t_s$ )     | 60 -180 Seconds    |
| Average ramp up rate ( Liquids Temp $T_L$ ) to peak  |                                   | 3°C/second max     |
| $T_{s(max)}$ to $T_L$ - Ramp-up Rate                 |                                   | 5°C/second max     |
| Reflow   | - Temperature ( $T_L$ ) (Liquids) | 217°C              |
|  | - Time (min to max) ( $t_s$ )     | 60 -150 Seconds    |
| Peak Temperature ( $T_P$ )                           |                                   | 260 +0/-5°C        |
| Time within 5°C of actual peak Temperature ( $t_p$ ) |                                   | 10 - 30 Seconds    |
| Ramp-down Rate                                       |                                   | 6°C/second max     |
| Time 25°C to peak Temperature ( $T_P$ )              |                                   | 8 minutes Max      |
| Do not exceed  |                                   | 260°C              |

## ■ 包装 (单位: mm/inch)

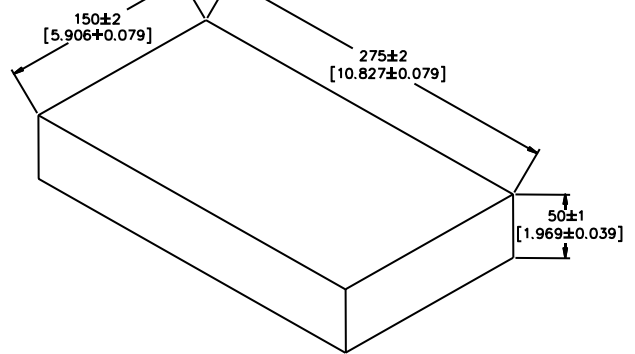
### Packaging (mm/inch)

#### Axial Packaging (Bulk)

##### Plastic Tray



##### Inner box



#### Packaging Quantity:

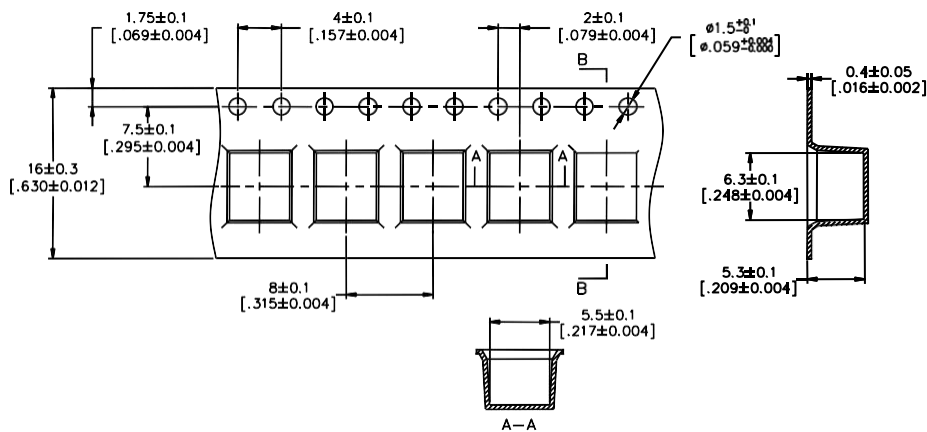
1,00 PCS per Plastic Tray

5 Plastic Trays per inner box

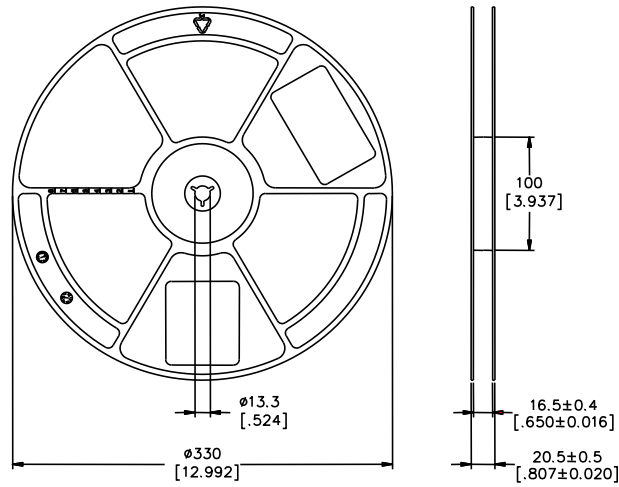
500 PCS per inner box

#### SMD Packaging (Tape & Reel)

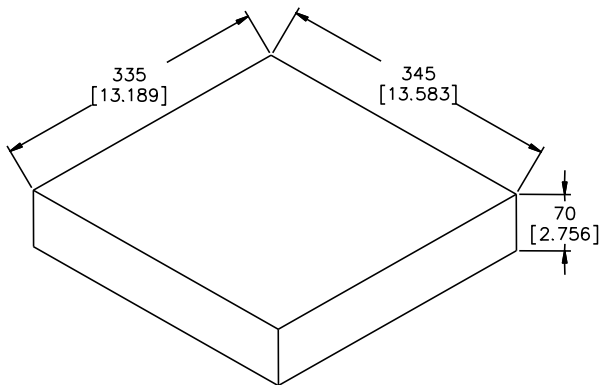
##### Tape



## Reel



## Inner box



### Packaging Quantity:

1,000 PCS per reel (13")

3 reels per inner box

3,000 PCS per inner box

### 仓库储存条件

#### Warehouse Storage Conditions of Products

储存条件:

Storage Conditions:

1. 储存温度:  $-10^{\circ}\text{C} \sim +40^{\circ}\text{C}$

Storage Temperature:  $-10^{\circ}\text{C} \sim +40^{\circ}\text{C}$

2. 相对湿度:  $\leq 75\% \text{RH}$

Relative Humidity:  $\leq 75\% \text{RH}$

3. 不要将本产品存放在有腐蚀性气体或是阳光直接照射的环境中

Keep away from corrosive atmosphere and sunlight

储存期限: 1 年

Period of Storage: 1 year