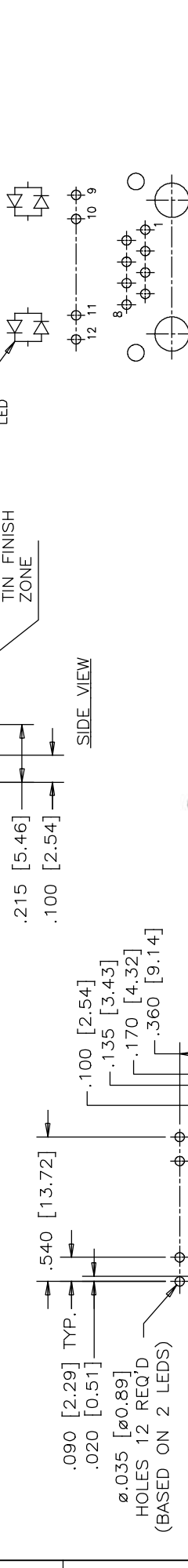
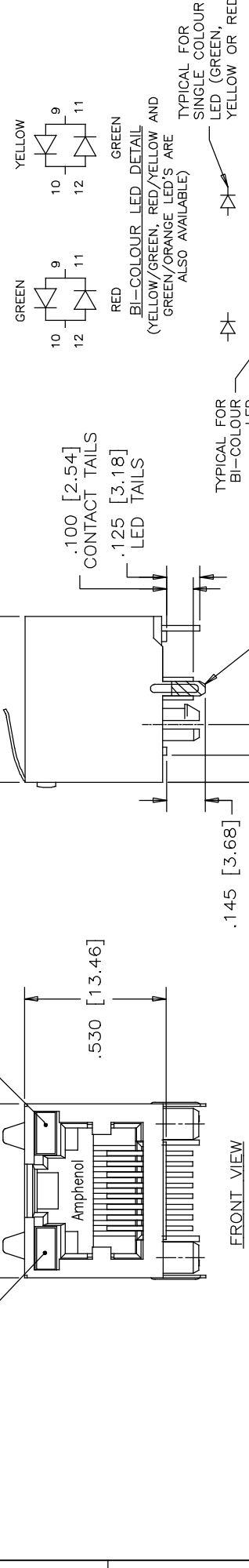


REV	DESCRIPTION, ECN, EAR NO.	DATE	APP'D
A	PROPOSAL	MAR15/17	LCHAN
B	CHANGE SHIELD PCB TAIL PLATING	MAR19/17	LCHAN
C	FIX DRAWING ERRORS	OCT09/17	LCHAN

UNLESS SPECIFIED OTHERWISE	DRAWN	Hanson, C	DATE	MAR15/17
PRIMARY UNITS	CHECKED	LAWRENCE, C		
SECONDARY UNITS	M.E. APP'D			
REFERENCE IN PARENTHESES	Q.A. APP'D			
GENERAL TOLERANCES	DWG APPR.			
1 DECIMAL PLACE	ENG. REL. NO.			
2 DECIMAL PLACES	REF.			
3 DECIMAL PLACES				
ANGULAR DEGREES				

THIS DOCUMENT CONTAINS PROPRIETARY INFORMATION AND SUCH INFORMATION MAY NOT BE DISCLOSED TO OTHERS FOR ANY PURPOSE OR USED FOR MANUFACTURING PURPOSES WITHOUT WRITTEN PERMISSION FROM AMPHENOL CANADA CORP.



**MATERIALS:**  
 PLASTIC HOUSING: HIGH TEMPERATURE THERMOPLASTIC FLAMMABILITY RATING UL 94V-0

**CONTACTS:**  
 PHOSPHOR BRONZE  
 PLATING: GOLD PLATING ON MATING SURFACE.  
 [SEE PART NUMBER FOR THICKNESS]  
 50 μ [1.27 MICRONS]  
 MIN. NICKEL UNDERPLATE  
 100 μ [2.54 MICRONS]  
 MIN. MATTE TIN ON CONTACT TAILS.

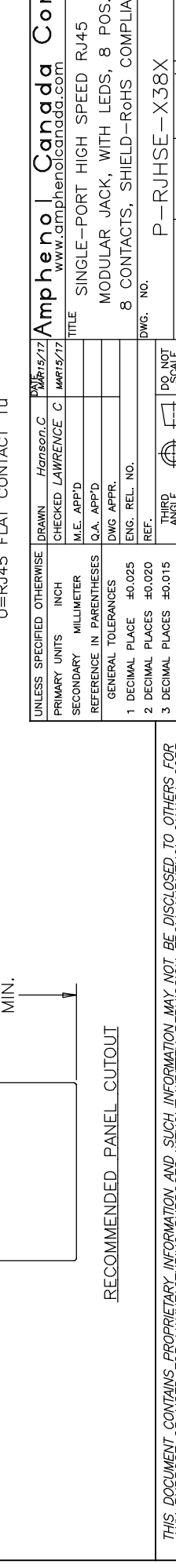
**SHIELD:** STAINLESS STEEL WITH TIN FINISH ON SOLDER TAIL

**AMPHENOL PART NUMBER: RJHSE-X38X**

**GOLD PLATING**

REFER TO LED OPTIONS DRAWING FOR ORDERING CODES

E=RJ45 FLAT CONTACT 6u"  
 G=RJ45 FLAT CONTACT 15u"  
 J=RJ45 FLAT CONTACT 30u"  
 S=RJ45 FLAT CONTACT 50u"  
 O=RJ45 FLAT CONTACT 1u"



UNLESS SPECIFIED OTHERWISE	DRAWN	Hanson, C	DATE	MAR15/17
PRIMARY UNITS	CHECKED	LAWRENCE, C		
SECONDARY UNITS	M.E. APP'D			
REFERENCE IN PARENTHESES	Q.A. APP'D			
GENERAL TOLERANCES	DWG APPR.			
1 DECIMAL PLACE	ENG. REL. NO.			
2 DECIMAL PLACES	REF.			
3 DECIMAL PLACES				
ANGULAR DEGREES				

THIS DOCUMENT CONTAINS PROPRIETARY INFORMATION AND SUCH INFORMATION MAY NOT BE DISCLOSED TO OTHERS FOR ANY PURPOSE OR USED FOR MANUFACTURING PURPOSES WITHOUT WRITTEN PERMISSION FROM AMPHENOL CANADA CORP.