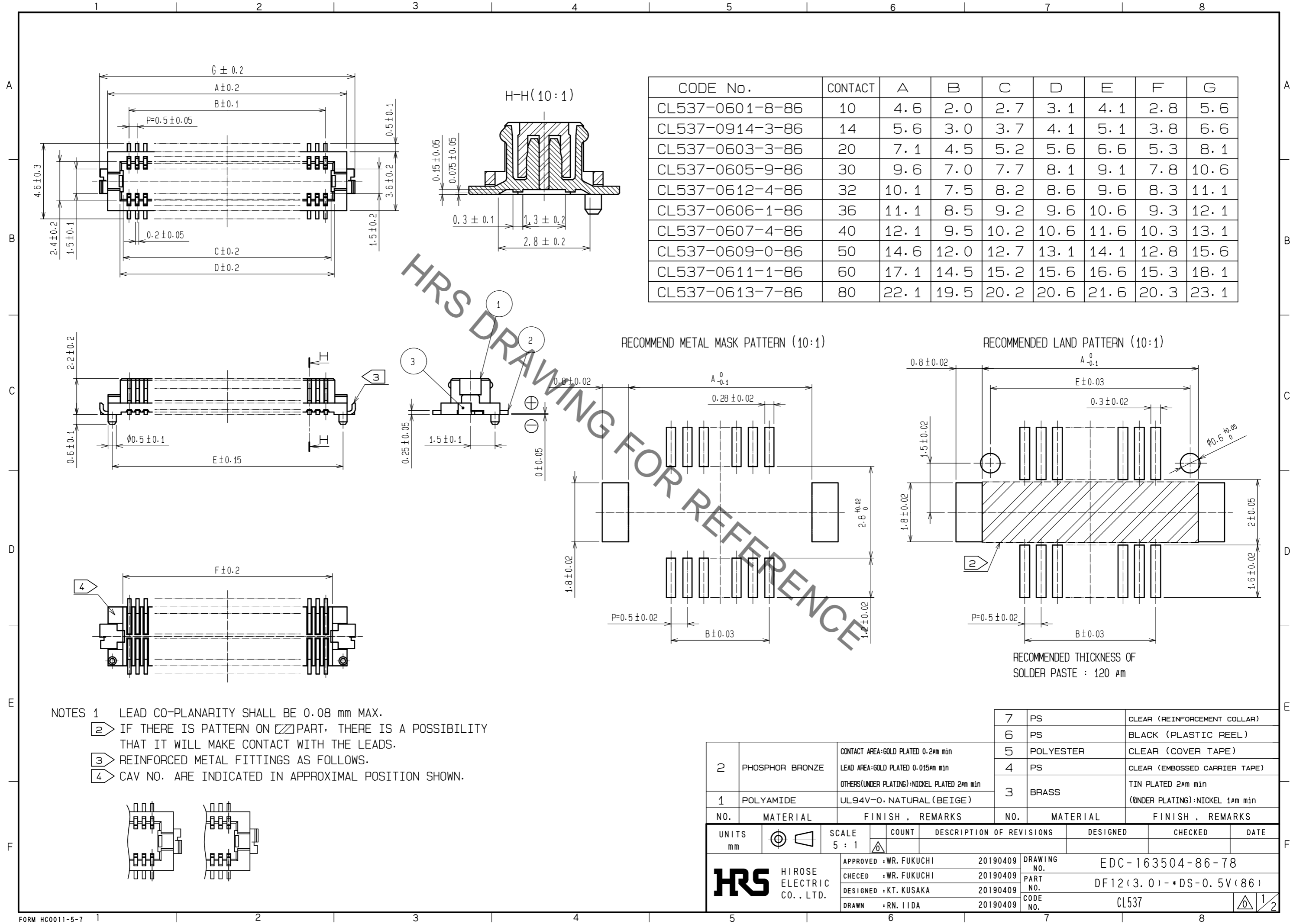
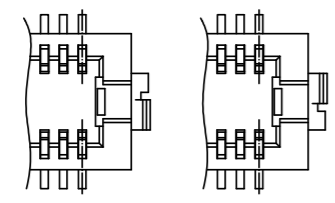


Apr.1.2020 Copyright 2020 HIROSE ELECTRIC CO., LTD. All Rights Reserved.
In case of consideration for using Automotive equipment / device which demand high reliability, kindly contact our sales window correspondents.

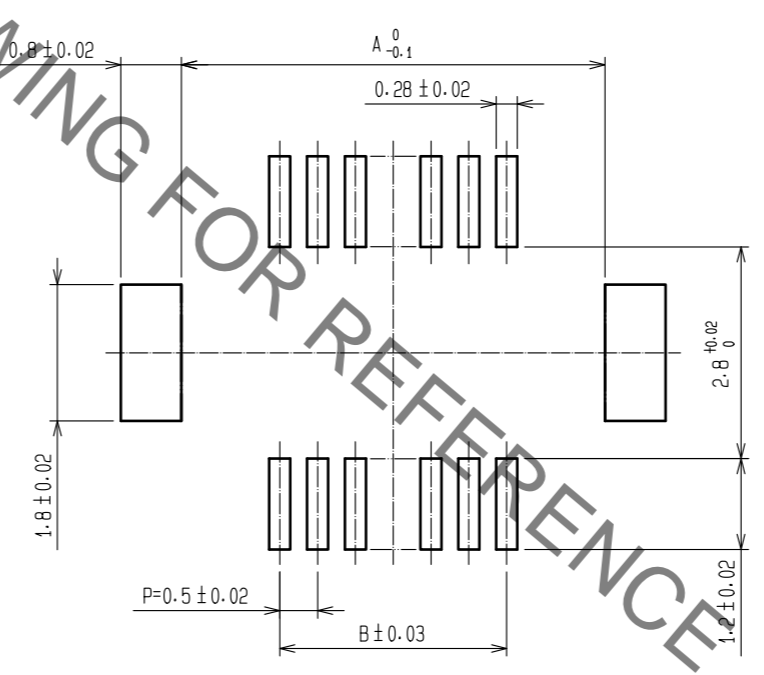


| CODE No. | CONTACT | A | B | C | D | E | F | G |
|-----------------|---------|------|------|------|------|------|------|------|
| CL537-0601-8-86 | 10 | 4.6 | 2.0 | 2.7 | 3.1 | 4.1 | 2.8 | 5.6 |
| CL537-0914-3-86 | 14 | 5.6 | 3.0 | 3.7 | 4.1 | 5.1 | 3.8 | 6.6 |
| CL537-0603-3-86 | 20 | 7.1 | 4.5 | 5.2 | 5.6 | 6.6 | 5.3 | 8.1 |
| CL537-0605-9-86 | 30 | 9.6 | 7.0 | 7.7 | 8.1 | 9.1 | 7.8 | 10.6 |
| CL537-0612-4-86 | 32 | 10.1 | 7.5 | 8.2 | 8.6 | 9.6 | 8.3 | 11.1 |
| CL537-0606-1-86 | 36 | 11.1 | 8.5 | 9.2 | 9.6 | 10.6 | 9.3 | 12.1 |
| CL537-0607-4-86 | 40 | 12.1 | 9.5 | 10.2 | 10.6 | 11.6 | 10.3 | 13.1 |
| CL537-0609-0-86 | 50 | 14.6 | 12.0 | 12.7 | 13.1 | 14.1 | 12.8 | 15.6 |
| CL537-0611-1-86 | 60 | 17.1 | 14.5 | 15.2 | 15.6 | 16.6 | 15.3 | 18.1 |
| CL537-0613-7-86 | 80 | 22.1 | 19.5 | 20.2 | 20.6 | 21.6 | 20.3 | 23.1 |

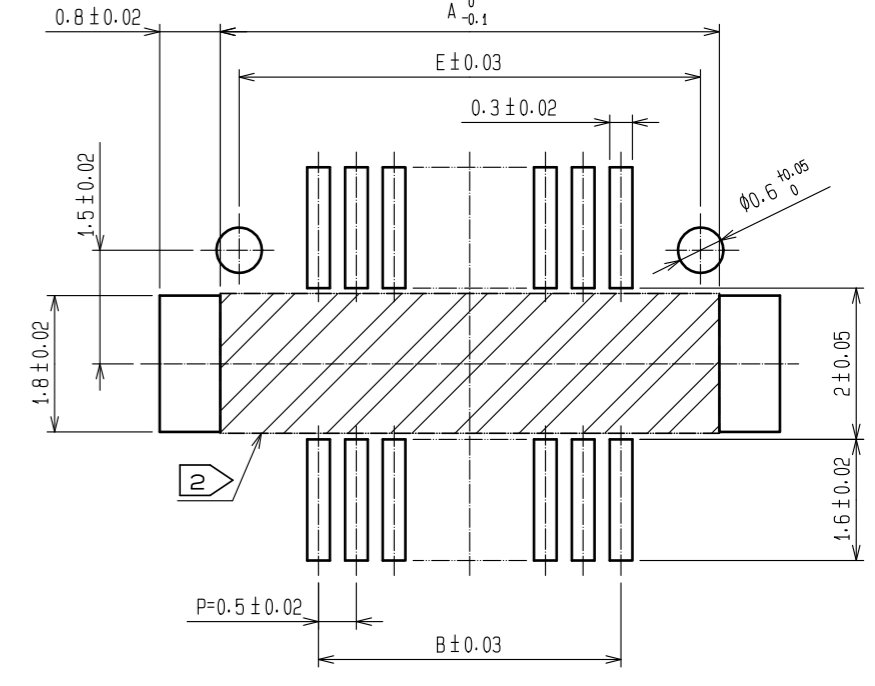
- NOTES
- 1 LEAD CO-PLANARITY SHALL BE 0.08 mm MAX.
 - 2 IF THERE IS PATTERN ON PART, THERE IS A POSSIBILITY THAT IT WILL MAKE CONTACT WITH THE LEADS.
 - 3 REINFORCED METAL FITTINGS AS FOLLOWS.
 - 4 CAV NO. ARE INDICATED IN APPROXIMAL POSITION SHOWN.



RECOMMEND METAL MASK PATTERN (10:1)



RECOMMENDED LAND PATTERN (10:1)



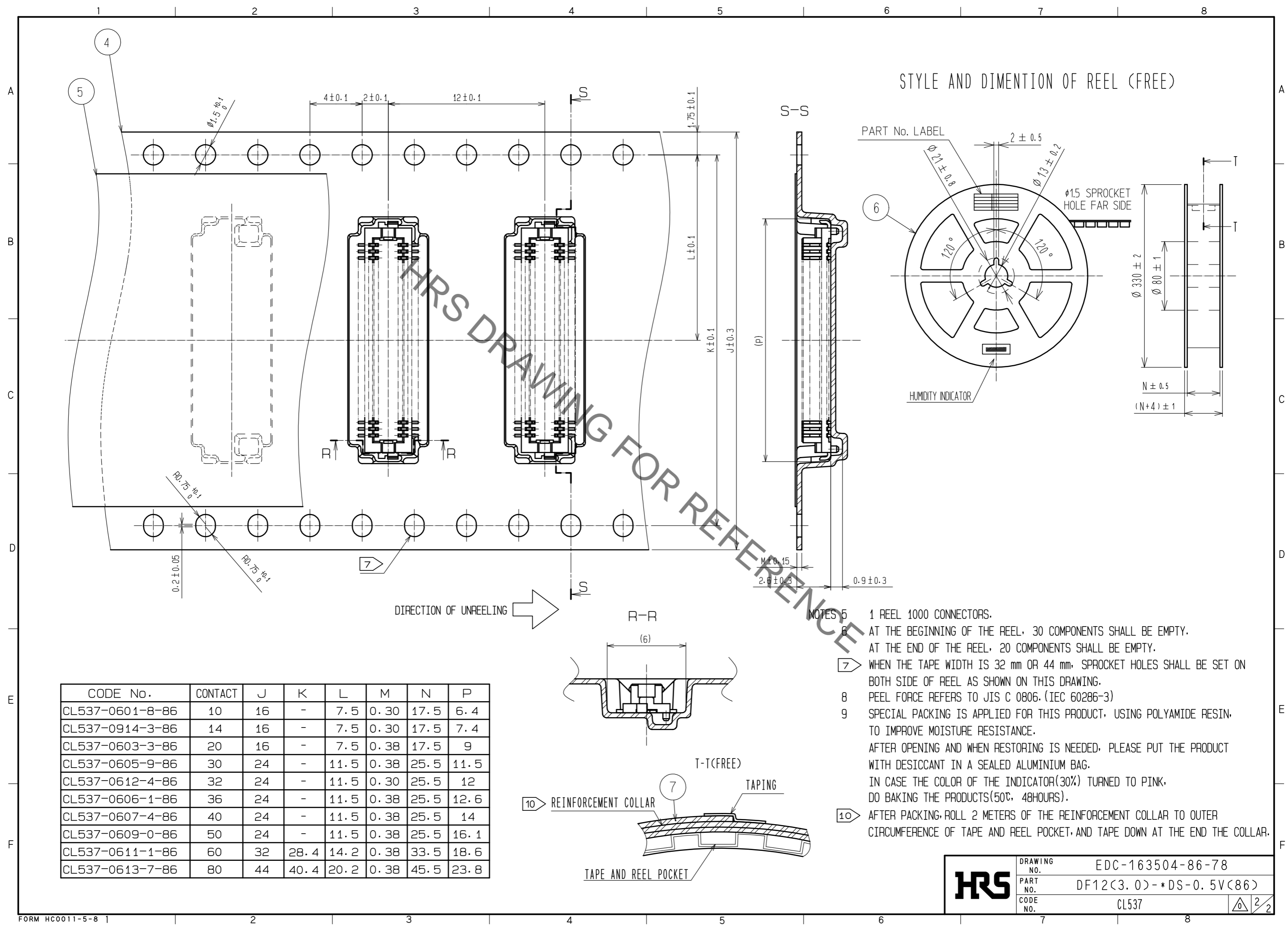
RECOMMENDED THICKNESS OF SOLDER PASTE : 120 μm

| NO. | MATERIAL | FINISH . REMARKS | NO. | MATERIAL | FINISH . REMARKS |
|-----|-----------------|--|-----|-----------|--|
| 2 | PHOSPHOR BRONZE | CONTACT AREA:GOLD PLATED 0.2μm min LEAD AREA:GOLD PLATED 0.015μm min OTHERS(UNDER PLATING):NICKEL PLATED 2μm min | 7 | PS | CLEAR (REINFORCEMENT COLLAR) |
| 1 | POLYAMIDE | UL94V-0, NATURAL (BEIGE) | 6 | PS | BLACK (PLASTIC REEL) |
| | | | 5 | POLYESTER | CLEAR (COVER TAPE) |
| | | | 4 | PS | CLEAR (EMBOSSED CARRIER TAPE) |
| | | | 3 | BRASS | TIN PLATED 2μm min (UNDER PLATING):NICKEL 1μm min |

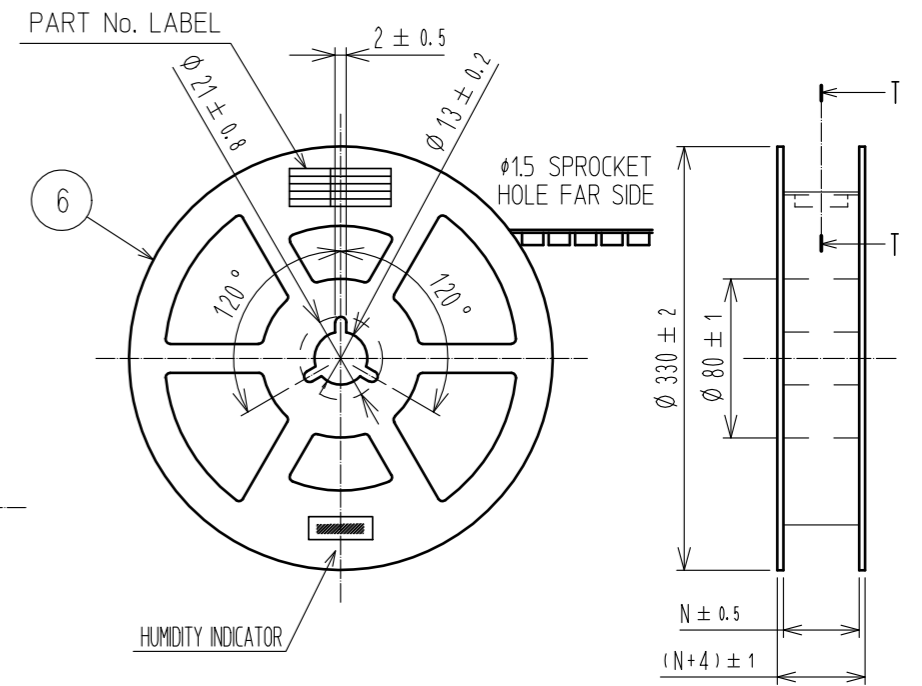
| UNITS | SCALE | COUNT | DESCRIPTION OF REVISIONS | DESIGNED | CHECKED | DATE |
|-------|-------|-------|---------------------------------|----------|---------|------|
| mm | 5 : 1 | △ | APPROVED : WR. FUKUCHI 20190409 | | | |
| | | | CHECED : WR. FUKUCHI 20190409 | | | |
| | | | DESIGNED : KT. KUSAKA 20190409 | | | |
| | | | DRAWN : RN. IIDA 20190409 | | | |

| DRAWING NO. | PART NO. | CODE NO. |
|------------------|------------------------|----------|
| EDC-163504-86-78 | DF12(3.0)-*DS-0.5V(86) | CL537 |

Apr.1.2020 Copyright 2020 HIROSE ELECTRIC CO., LTD. All Rights Reserved.
 In case of consideration for using Automotive equipment / device which demand high reliability, kindly contact our sales window correspondents.



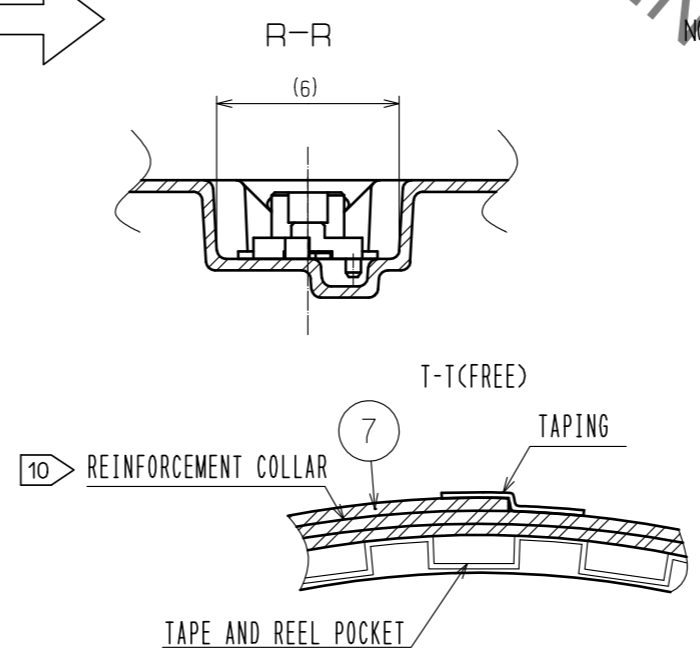
STYLE AND DIMENTION OF REEL (FREE)



DIRECTION OF UNREELING →

| CODE No. | CONTACT | J | K | L | M | N | P |
|-----------------|---------|----|------|------|------|------|------|
| CL537-0601-8-86 | 10 | 16 | - | 7.5 | 0.30 | 17.5 | 6.4 |
| CL537-0914-3-86 | 14 | 16 | - | 7.5 | 0.30 | 17.5 | 7.4 |
| CL537-0603-3-86 | 20 | 16 | - | 7.5 | 0.38 | 17.5 | 9 |
| CL537-0605-9-86 | 30 | 24 | - | 11.5 | 0.38 | 25.5 | 11.5 |
| CL537-0612-4-86 | 32 | 24 | - | 11.5 | 0.30 | 25.5 | 12 |
| CL537-0606-1-86 | 36 | 24 | - | 11.5 | 0.38 | 25.5 | 12.6 |
| CL537-0607-4-86 | 40 | 24 | - | 11.5 | 0.38 | 25.5 | 14 |
| CL537-0609-0-86 | 50 | 24 | - | 11.5 | 0.38 | 25.5 | 16.1 |
| CL537-0611-1-86 | 60 | 32 | 28.4 | 14.2 | 0.38 | 33.5 | 18.6 |
| CL537-0613-7-86 | 80 | 44 | 40.4 | 20.2 | 0.38 | 45.5 | 23.8 |

- NOTES
- 5 1 REEL 1000 CONNECTORS.
 - 6 AT THE BEGINNING OF THE REEL, 30 COMPONENTS SHALL BE EMPTY. AT THE END OF THE REEL, 20 COMPONENTS SHALL BE EMPTY.
 - 7 WHEN THE TAPE WIDTH IS 32 mm OR 44 mm, SPROCKET HOLES SHALL BE SET ON BOTH SIDE OF REEL AS SHOWN ON THIS DRAWING.
 - 8 PEEL FORCE REFERS TO JIS C 0806. (IEC 60286-3)
 - 9 SPECIAL PACKING IS APPLIED FOR THIS PRODUCT, USING POLYAMIDE RESIN, TO IMPROVE MOISTURE RESISTANCE. AFTER OPENING AND WHEN RESTORING IS NEEDED, PLEASE PUT THE PRODUCT WITH DESICCANT IN A SEALED ALUMINIUM BAG. IN CASE THE COLOR OF THE INDICATOR(30%) TURNED TO PINK, DO BAKING THE PRODUCTS(50°C, 48HOURS).
 - 10 AFTER PACKING, ROLL 2 METERS OF THE REINFORCEMENT COLLAR TO OUTER CIRCUMFERENCE OF TAPE AND REEL POCKET, AND TAPE DOWN AT THE END THE COLLAR.



| | | |
|------------|-------------|------------------------|
| HRS | DRAWING NO. | EDC-163504-86-78 |
| | PART NO. | DF12(3.0)-*DS-0.5V(86) |
| | CODE NO. | CL537 |