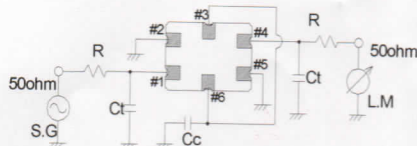


# MONOLITHIC CRYSTAL FILTER SPECIFICATION

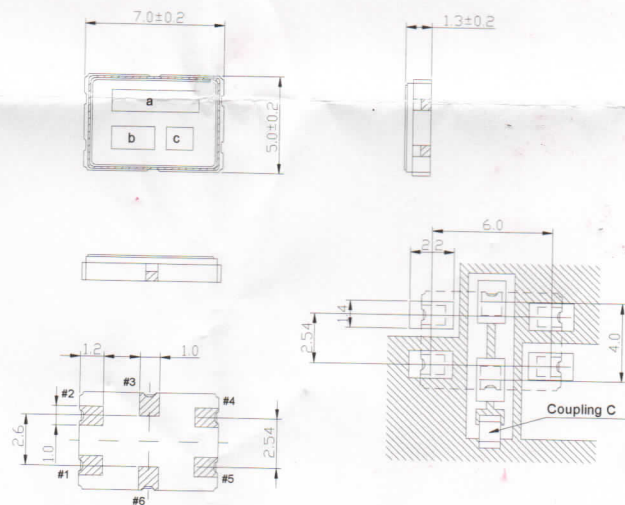
1 / 1

<p>1.MODEL</p> <p>2.PARTS NUMBER(USER)</p> <p>3.TYPE</p> <p>4.ELECTRICAL PERFORMANCES</p> <p style="margin-left: 20px;">4-1.Nominal Frequency</p> <p style="margin-left: 20px;">4-2.Pass Bandwidth</p> <p style="margin-left: 20px;">4-3.Stop Bandwidth</p> <p style="margin-left: 20px;">4-4.Insertion Loss</p> <p style="margin-left: 20px;">4-5.Ripple</p> <p style="margin-left: 20px;">4-6.Guaranteed Attenuation</p> <p style="margin-left: 20px;">4-7.Spurious Response</p> <p style="margin-left: 20px;">4-8.Maximum Inputlevel</p> <p style="margin-left: 20px;">4-9.Terminal Impedance</p> <p style="margin-left: 20px;">4-10.Insulation Resistance</p> <p style="margin-left: 20px;">4-11.Operating Temperature Range</p> <p>5.TEST CIRCUIT</p>	<p>D45015GQ42</p> <p>DSF753SDF</p> <p>45.000 MHz</p> <p>+/- 7.50 kHz MIN./ 3dB</p> <p>+/- 25.00 kHz MAX./ 30dB</p> <p>4.0 dB MAX./ (MINIMUM LOSS)</p> <p>1.0 dB MAX.</p> <p>70 dB MIN./(f0±910kHz)</p> <p>45 dB MIN.</p> <p>-10 dBm</p> <p>570 ohm+/- 10%</p> <p>3.0 pF+/-0.5pF</p> <p>500 M ohm MIN. / DC 100V ( Between Case and IN/OUT Terminal )</p> <p>-20 to +70 deg.C</p>
--	--



R=520ohm  
 Ct=3.0pF(floating capacity included)  
 Cc=11.0pF(floating capacity included)

## 6.Dimensions



## 7.Marking

- ( a ) Model
- ( b ) Maker
- ( c ) Manufactured Year Month(\*1)

PIN	Connection
#1	IN
#2	GND
#3	Connect With #6
#4	OUT
#5	GND
#6	Connect With #3

(\*1)Year The last digit of the year of the Christian Era should be corresponded to the Arabic figures.

JAN.	FEB.	MAR.	APR.	MAY.	JUN.	JUL.	AUG.	SEP.	OCT.	NOV.	DEC.
A	B	C	D	E	F	G	H	J	K	L	M

				DWG. No.
	DATE	2012/9/10		