

DATA SHEET

WIRELESS COMPONENTS

Low Pass Filter
LPF1005LM55R0709A

0.7-0.9 GHz
1005 Series



FEATURES

- Compact size design
- RoHS compliant

APPLICATIONS

- LTE(0.7-2.7GHz)

ORDERING INFORMATION

All part numbers are identified by the series, packing type, material, size, antenna type, working frequency and packing quantity.

PART NUMBER

LPF 1005 LM 55 R 0709A
 (1) (2) (3) (4) (5) (6)

(1) PRODUCT

LPF = Low Pass Filter

(2) SIZE

1005 = 1.0 × 0.5

(3) MATERIALS

Material Code LM

(4) TYPE

55 = Type 55

(5) PACKING STYLE

R = Tape and Reel

(6) WORKING FREQUENCY

0709 = 0.7-0.9 GHz

SPECIFICATION

Table 1

DESCRIPTION	Value
Pass Band	698 ~ 960 MHz
Impedance	50Ω
Insertion Loss	0.7dB (Max) at 25°C
V.S.W.R. / Return Loss	2.0 (Max) / 10dB (Min.)
Attenuation	13 dB Min. @ 1554 ~ 1610 MHz 35 dB Min. @ 1805 ~ 1830 MHz 35 dB Min. @ 2110 ~ 2170 MHz 30 dB Min. @ 1710 ~ 2700 MHz
Operating Temperature	-40 ~ 85°C

DIMENSIONS

Table 2 Machanical

	DIMENSION
L (mm)	1.000 ±0.15
W (mm)	0.500 ±0.15
T (mm)	0.350 ±0.10
D1 (mm)	0.050 ±0.05
D2 (mm)	0.180 ±0.10
D3 (mm)	0.180 ±0.10
E1 (mm)	0.050 ±0.05
E2 (mm)	0.125 ±0.10
E3 (mm)	0.150 ±0.10

OUTLINES

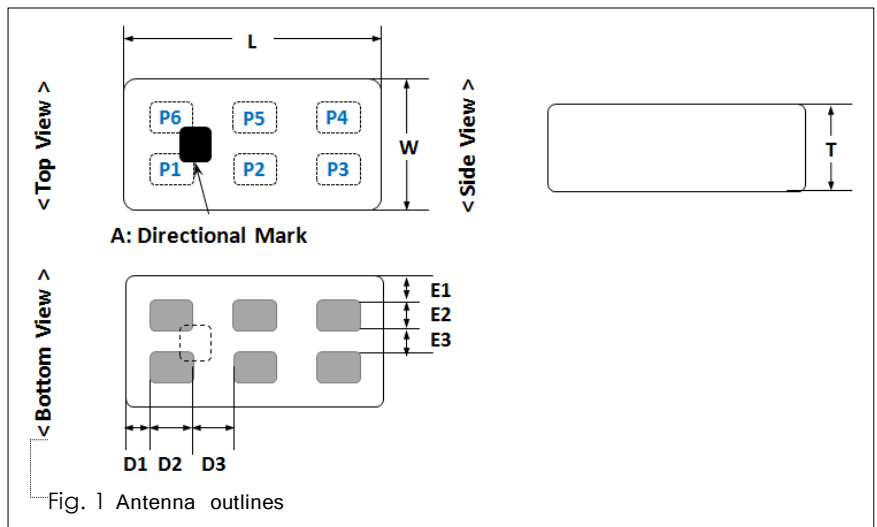
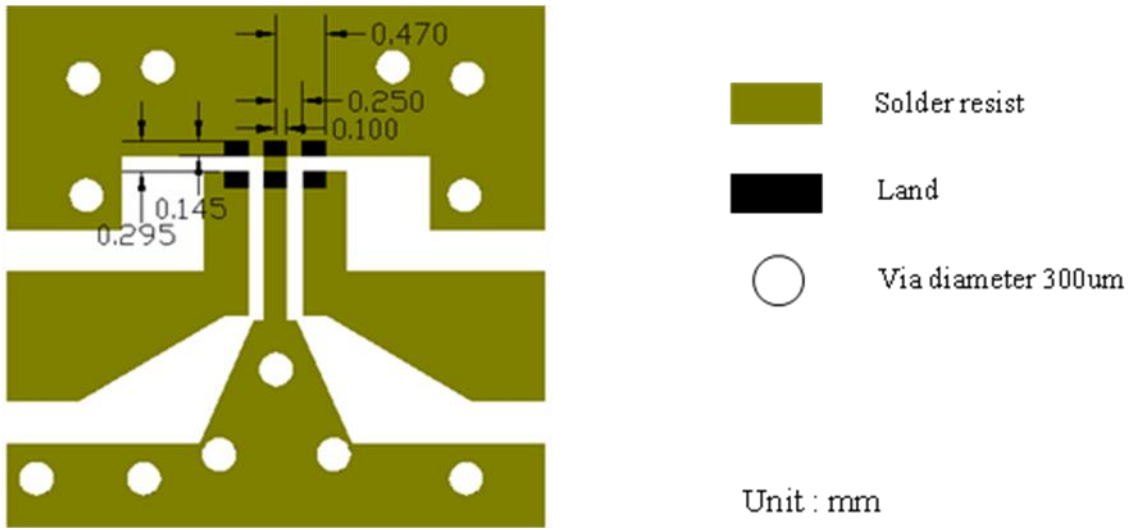


Table 3 Termination configuration

TERMINAL NAME	FUNCTION
(1)	NC
(2)	GND
(3)	NC
(4)	In/Out
(5)	GND
(6)	Out/In



Line width should be designed to match 50Ω characteristic impedance, depending on PCB material and thickness.

Fig. 2 Reference design of evaluation board

ELECTRICAL PERFORMANCES

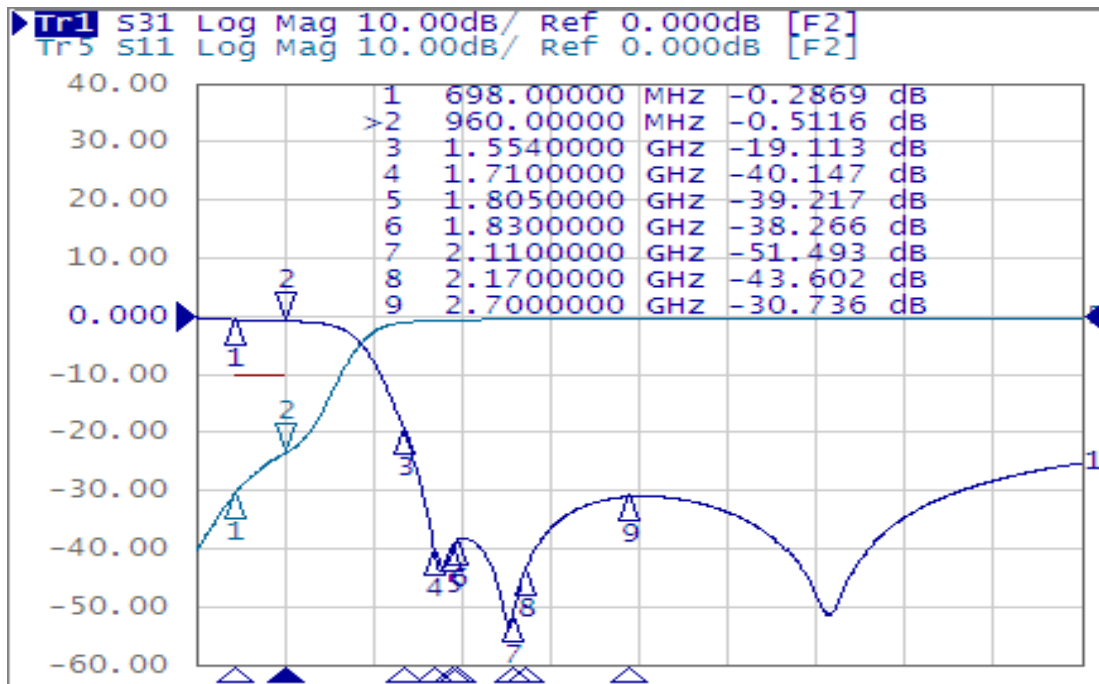


Fig. 3 Frequency Characteristics

REVISION HISTORY

REVISION	DATE	CHANGE NOTIFICATION	DESCRIPTION
Version 2	Sep.29, 2020	-	- New data sheet for Low Pass Filter, 0.7-0.9 GHz application, 1005 series