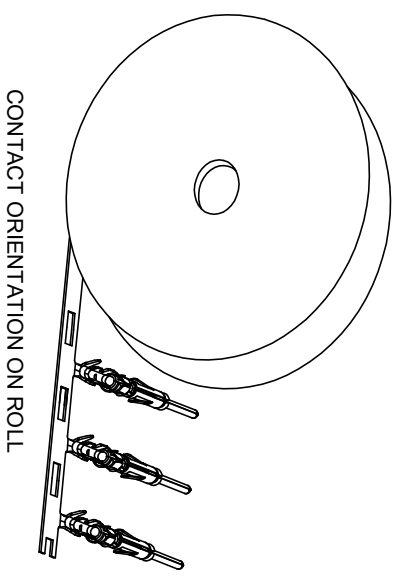


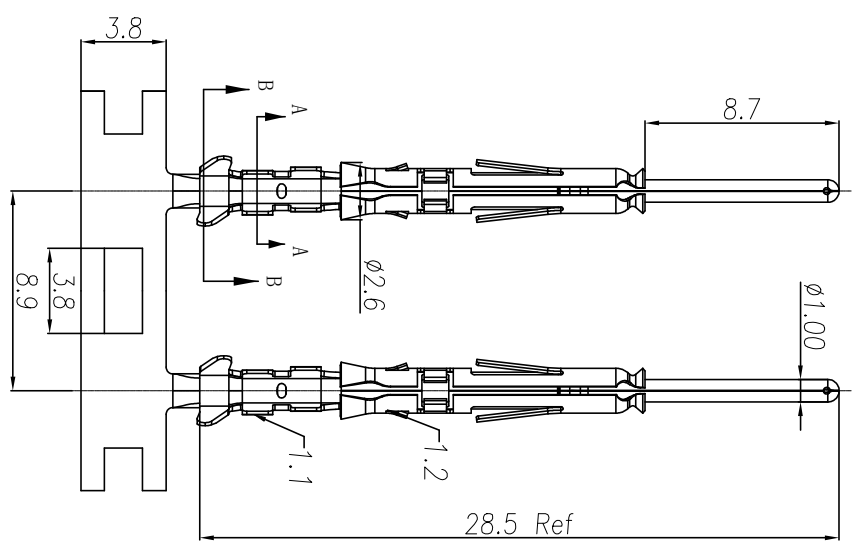
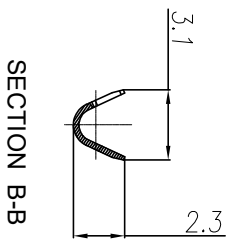
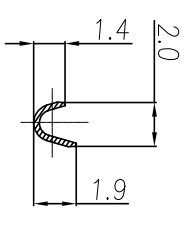
REVISIONS				
REV	ECO	DESCRIPTION	DATE	BY APPR
B1	-	RELEASED DRAWING	JAN-18-2014	ARROW TOMMY
B2	-	CHANGE HAND CRIMPER	Nov-8-19	Flan Tommy



NOTES: (UNLESS OTHERWISE SPECIFIED)

- MATERIAL:
 - CONTACT BODY: COPPER ALLOY.
 - OUTER SPRING: STAINLESS STEEL.
- SPECIFICATIONS:
 - CURRENT RATING: 5A MAX.
 - TERMINATION TYPE: CRIMPING.
 - WIRE RANGE: 24~26AWG.
 - WIRE INSULATION DIA(MAX): $\varnothing 2.2\text{mm}$.
- ROHS COMPLIANT.
- ALL DIMENSIONS ARE FOR REFERENCE USE ONLY.
- AVAILABLE TOOLS:
 - HAND CRIMPER: MFX-3958 (B2)
 - CRIMP APPLICATOR: MFX-3957.
 - EXTRACTION TOOL: QXRT20.

P/N	CONTACT PLATING(MATING AREA)
SP24W1T	TIN PLATING OVER NICKEL.
SP24W1F	GOLD FLASH PLATING OVER NICKEL.
SP24W1G10	10 μ " GOLD PLATING OVER NICKEL.
SP24W1G15	15 μ " GOLD PLATING OVER NICKEL.
SP24W1G30	30 μ " GOLD PLATING OVER NICKEL.



QUANTITY	PART NUMBER	DESCRIPTION	ITEM

UNLESS OTHERWISE SPECIFIED			
1) All dimensions are in millimeters.	DRAWN:	RAI	Nov-8-19
2) Tolerances are as follows:	CHECKED:	MWH	Nov-8-19
1 Pt. DEC 2019	ENGINEER:		
3 Pt. DEC 2018	APPROVE:	Tommy	Nov-8-19
3) Note reference = Δ	CUSTOMER:		

MATERIAL SPECIFICATIONS			
PROCESS SPECIFICATIONS	THIS DRAWING IS SUPERSEDED FOR THE SPECIFICATIONS AND PERFORMANCE DATA OF THE MANUFACTURING CORPORATION. NO RIGHTS OF REPRODUCTION ARE GRANTED. ALL MANUFACTURING VARIATIONS		
NEXT ASBY	SCALE:	NONE	SHEET: 1 OF 1

Amphenol

Sine Systems - www.amphenol-sine.com
44724 Montley Drive
Clinton Township, MI 48038

ECO-MATE PIN CONTACT.
STAMPED, 24-26AWG, SIZE 20