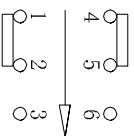
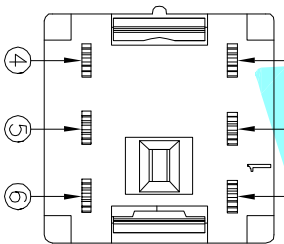
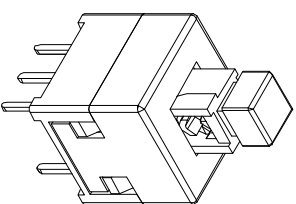
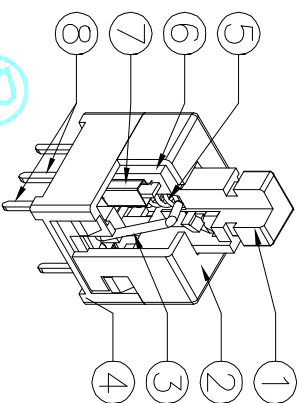
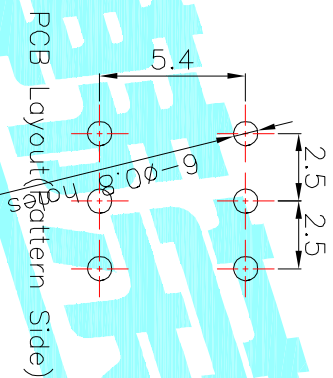
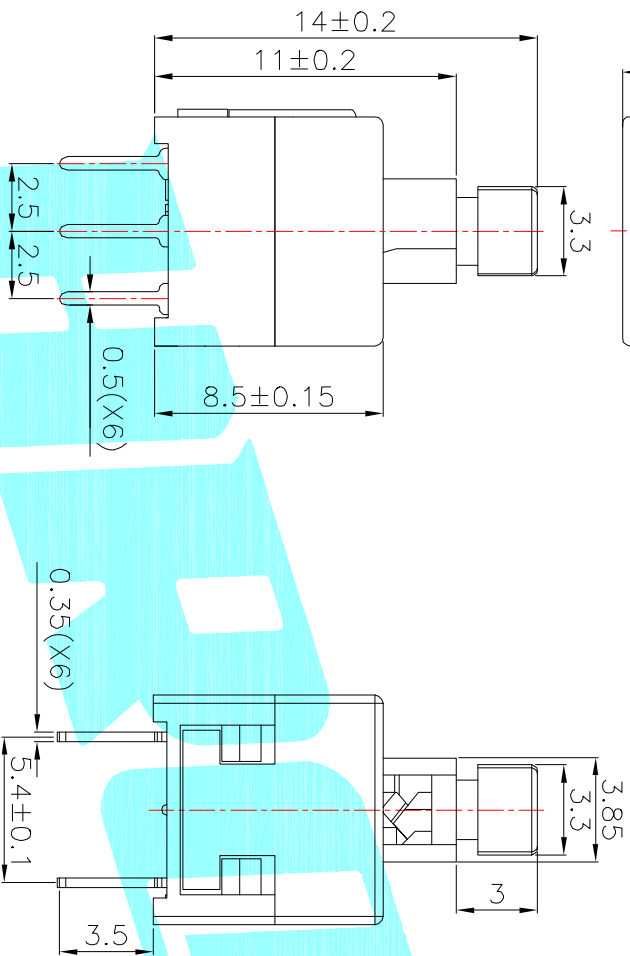


NOTE:
 1. Operating Force: 240gf±80gf
 2. Total Travel : 2.4±0.3mm
 3. Pre Travel: 1.5±0.3mm



Circuit Diagram

NO.	Operating Type	Part No.
1	Push To Lock	K8-2213A-L1
2	Push No Lock	K8-2213A-N1
3	Push No Sound No Lock	K8-2213A-NN

ITEM	PART NAME	TER'NO.	QTY.	MATERIAL	FINISHING	REMARK
⑧	Terminal	---	6	Brass strip	Plating silver	---
⑦	Contact	---	2	Phosphor bronze	Plating silver	---
⑥	Securing glue	---	2	PA66	Black	---
⑤	Spring	---	1	SUS	Natural	---
④	Base	---	1	PBT	Black	---
③	Crochet Needle	---	1	SUS	Natural	---
②	Cover	---	1	POM	Black	---
①	KNOB	---	1	POM	White	---

APPROVALS		DATE	TITLE:	
DRAWN	xu qi feng	2014.11.10	PUSHBUTTON SWITCHS	

ECN NO.	REV.	DATE.	DESCRIPTION.	CHANGE.	CHECK.	APPRO.	TOLERANCES ARE	ANGLE	UNIT:	SCALE:	PROJ:
	A		NEW				30±0.15 ±	±0.30	mm	1:1	PROJ: 1 OF 1
							10~30 ±	±0.20			
							5~10 ±	±0.15			
							~5 ±	±0.10			