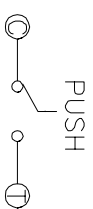


TER	ANG. (20°)	(15°)	(15°)	(20°)
①				
②				
③				

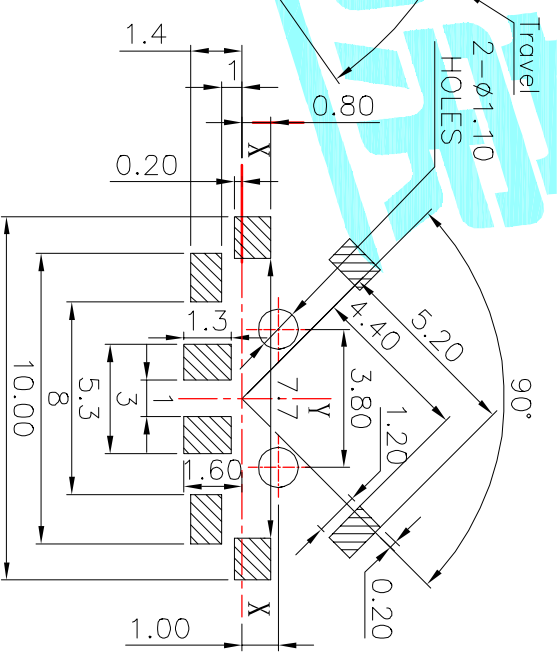
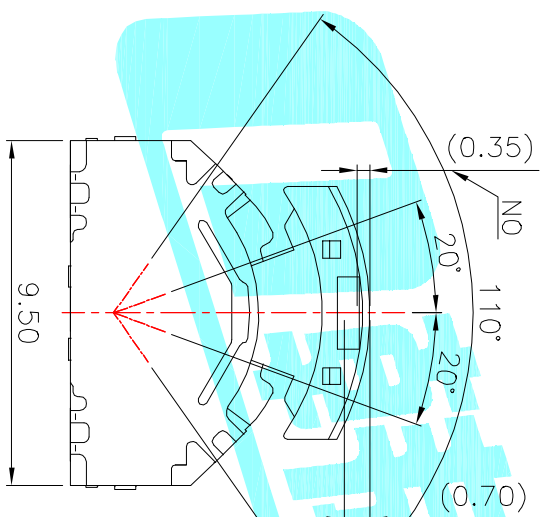
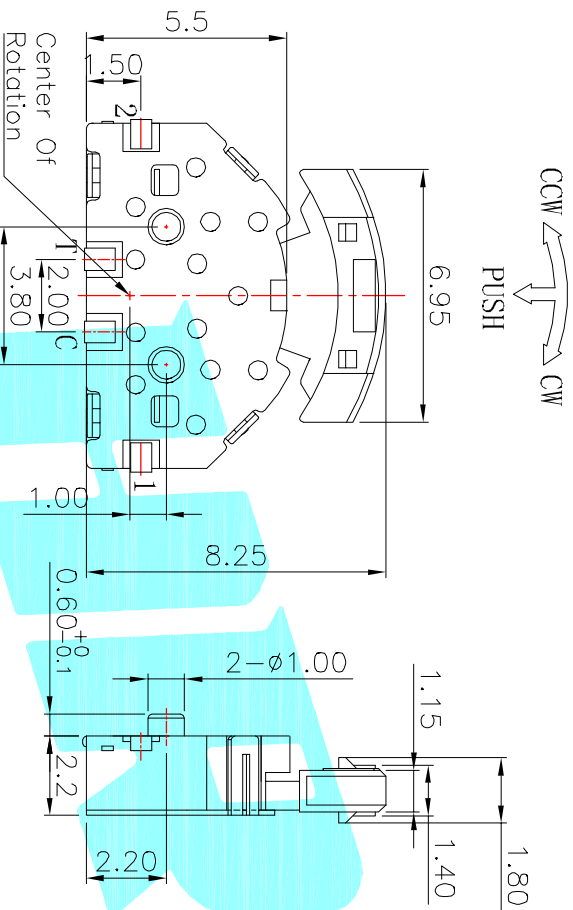
0° (ZZZZ=NO)

CCW ← → CW

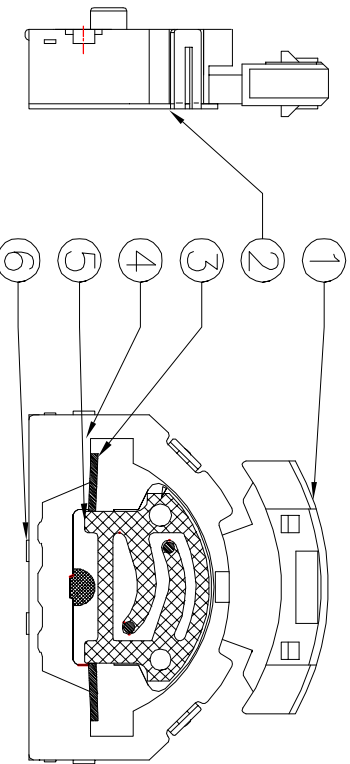
CODE TABLE



NOTE:
Operating Force:
lever portion 100 ± 30 gf
Push portion 205 ± 50 gf



P.C.B Mounting
Pattern Dimension



ITEM	PART NAME	TER'NO.	QTY.	MATERIAL	FINISHING	REMARK
①	Keystroke		1	Nylon	White	
②	Cover		1	SUS		
③	Spring		1	SUS		
④	Base		1	Nylon	Black	
⑤	Terminal		4	Brass(0.15t)	Plating silver	
⑥	Contact		1	F.Ag/Brass		

APPROVALS		DATE	TITLE:	
DRAWN	J.X.Zhang	2013/8/15	MULTIFUNCTIONAL SWITCHES	
CHECKED			PART NO. K1-1519SA-02	
APPROVALS			SCALE: 1:1	
TOLERANCES ARE			DRAWING NO.	
30~12.5	±0.30	ANGLE	PROJ.	
10~30	±0.20		SHEET 1 OF 1	
5~10	±0.15			
~5	±0.10			

ECN NO.	REV.	DATE.	DESCRIPTION.	CHANGE.	CHECK.	APPRO.
	A		NEW			



ELECTRONICS CO.,LTD