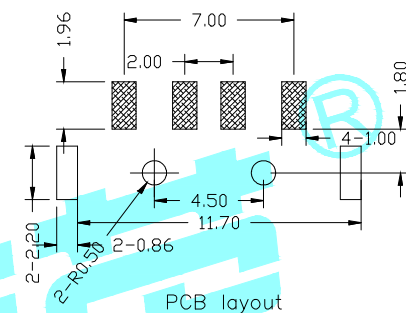
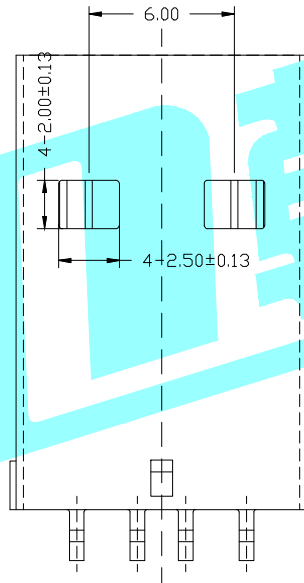
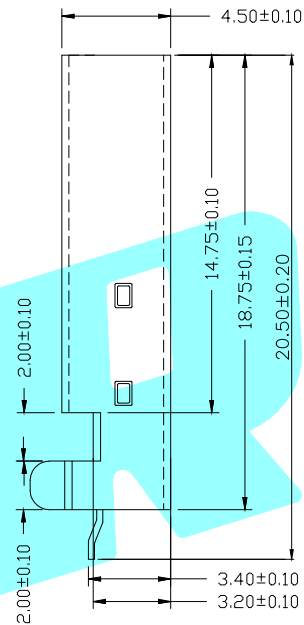
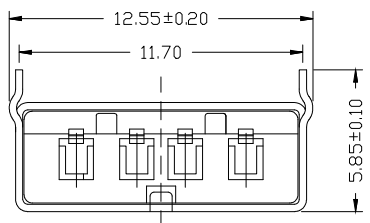
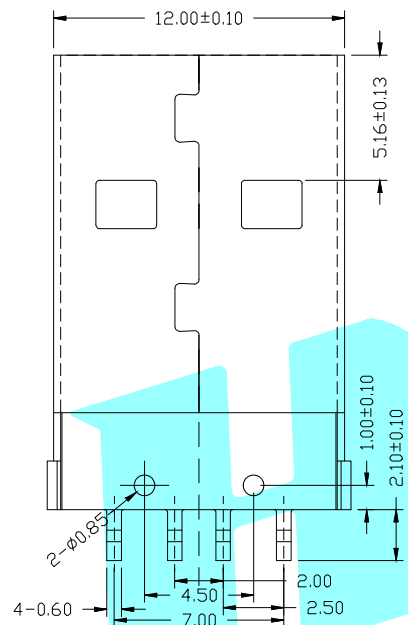
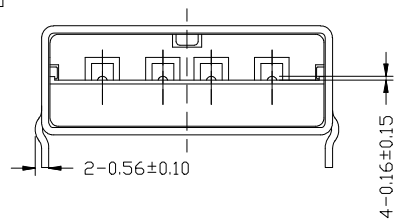


ROHS



PART NO.	
U-G-04WS-W-03	U-G-04WS-W-04
Housing Black	Housing White

SPECIFICATIONS

1. Rating : DC 30V 1.5A
2. Contact Resistance: $\leq 50m\Omega$
3. Insulation Resistance:
 $\geq 1000m\Omega$ Min DC250V
4. Operating Temperature Range:
 $-40^{\circ}C + 85^{\circ}C$
5. Manual welding is required: $\leq 350^{\circ}C$
 ≤ 3 seconds

③	Shell	—	1	SPCC	—	—
②	Contact	—	4	BRASS	—	—
①	Housing	—	1	PBT	Black/White	—
ITEM	PART NAME	TER'NO.	QTY.	MATERIAL	FINISHING	REMARK

APPROVALS		DATE		 ELECTRONICS CO.,LTD		
DRAWN	QFENG.XU	2014/6/17				
CHECKED				PART NO.		
APPROVALS				TOLERANCES ARE	30~以上 ±0.30 10~30 ±0.25 5~10 ±0.20 ~ 5 ±0.15	
				ANGLE	UNIT: mm SCALE: 1:1 PROJ:	
				±2'	DRAWING NO. SHEET 1 OF 1	

ECN NO.	REV.	DATE.	DESCRIPTION.	CHANGE.	CHECK.	APPRO.
—	A	—	NEW	—	—	—