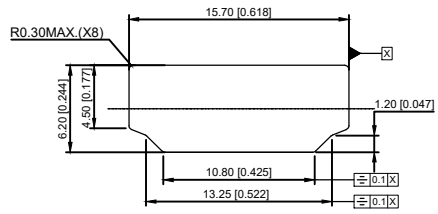


RECOMMENDED PCB LAYOUT (THICKNESS=1.6±0.15mm)  
 RECOMMENDED P.C.B. LAYOUT (T:1.20mm)  
 TOLERANCE UNSPECIFIED ±0.05mm



REFERENCE PANEL CUT OUT DIMENSION

XKB CONNECTIVITY

XKB CONNECTIVITY

SPECIFICATIONS

1. OPERATING CURRENT: 0.5A MAX.
2. OPERATION TEMPERATURE: -25 TO +85
3. DIELECTRIC WITHSTANDING VOLTAGE:
  - 500Volts AC BETWEEN ADJACENT TERMINAL (UNMATE)
  - 300Volts AC BETWEEN ADJACENT TERMINAL (MATE)
4. INSULATION RESISTANCE:
  - 100Mohm MIN (UNMATED); 10Mohm MIN. (MATED)
5. HDMI SPECIFICATION COMPLIANCE

XKB CONNECTIVITY

A71-05H3-1X1N1

- 1: Au 1U"
- 5: Au 15U"
- 6: Au 30U"

3	CONTACTS	19	COPPER ALLOY, GOLD PLATED OVER NICKEL ON CONTACT AREA AND 100u" MIN. TIN PLATED OVER NICKEL ON SOLDER TAILS
2	HOUSING	1	THERMOPLASTIC UL94V-0
1	SHELL	1	COPPER ALLOY, NICKEL PLATED

					ANGULAR	±5°	DSND	DATE	SCALE: N/A	MODEL TYPE:	HDMI CONNECTOR			
					L ≤ 4	±0.2	DWN	DATE	VIEW:	PART NO.:				
					4 < L ≤ 16	±0.3	CHKD	DATE	UNIT: mm/in	A71-05H3-1X1N1				
					16 < L ≤ 63	±0.4	APPD	DATE	SIZE: A4	DWG NO.:				
					L > 63	±0.5				A71-05H3-1X1N1				
					UNSPECIFIED TOLERANCES				XKB INDUSTRIAL PRECISION CO., LIMITED			WEIGHT	SHEET	REVISION
											1.0g	1/1	A0	
MARK	DESCRIPTION	DATE	REVISED	APPROVED										
REVISIONS														
www.xk-dg.cn www.helloxkb.com www.helloxkb.cn														