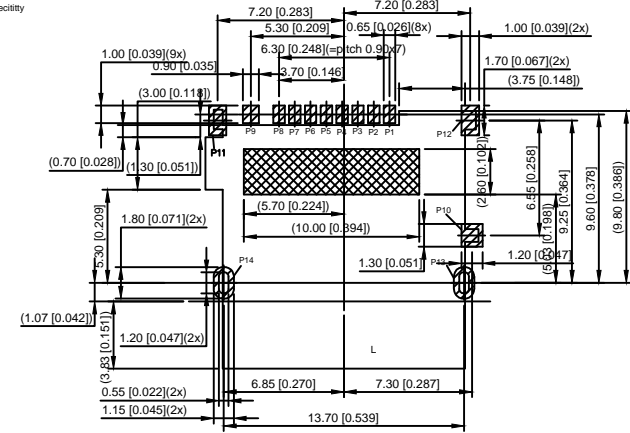
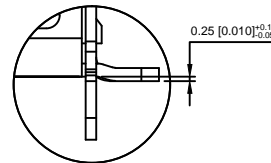
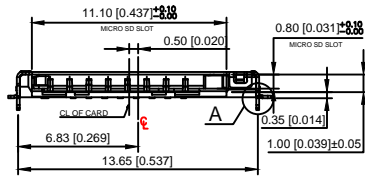


XKB Connectivity



RECOMMENDED PCB LAYOUT(TOP VIEW)
GENERAL TOLERANCE:±0.05
XKB Connectivity

- PAD AREA
- NO COPPER AREA
- KEEP OUT AREA



DETAIL A
SCALE 5:1

XKB Connectivity

1. 材料 MATERIAL:

- 1.1 塑料 PLASTIC: LCP , UL 94V-0, COLOR: BLACK
- 1.2 触点 CONTACT: COPPER ALLOY (C5210)
- 1.3 外壳 SHELL: STAINLESS STEEL (SUS304)

2. FINISH:

- 2.1 端子 TERMINAL: 50u" MIN. NICKEL PLATED OVERALL
- 2.2 触点 CONTACT: Au 1u"
- 2.3 尾部 TAIL: 100u" MATT-TIN PLATED
- 2.4 外壳 SHELL: 50u" MIN. NICKEL PLATED OVERALL

3. PRODUCT MUST CONFORM TO RoHS AND HALOGEN FREE REQUIREMENT

XKB Connectivity

PIN NUMBER	PIN DEFINE
PIN 1	MICRO_SD_DAT2
PIN 2	MICRO_SD_CD/DAT3
PIN 3	MICRO_SD_CMD
PIN 4	MICRO_SD_VDD
PIN 5	MICRO_SD_CLK
PIN 6	MICRO_SD_VSS
PIN 7	MICRO_SD_DAT0
PIN 8	MICRO_SD_DAT1
PIN 9	MICRO_SD_CD
PIN 10	GND
PIN 11,12,13,14	GND

CARD DETECT SWITCH OPEN/CLOSE FOR MICRO SD CARD POSITION

UN-INSERTION	CARD DETECT SWITCH
CARD UNINSERTION	OPEN
CARD HALF INSERTION	OPEN
CARD INSERTION	CLOSE

REVISIONS					DSND	DATE	SCALE: N/A	MODEL TYPE: TF CARD CONN
ΔX					DWN	DATE	VIEW:	PART NO.:
ΔX					CHKD	DATE	UNIT: mm/in	DWG NO.:
ΔX					APPD	DATE	SIZE: A4	XKTF-1250-21
MARK	DESCRIPTION	DATE	REVISED	APPROVED	XKB INDUSTRIAL PRECISION CO.,LIMITED			WEIGHT 1.0g
								SHEET 1/1
								REVISION A0

ANGLAR	±5°
L ≤ 4	±0.2
4 < L ≤ 16	±0.3
16 < L ≤ 63	±0.4
L > 63	±0.5